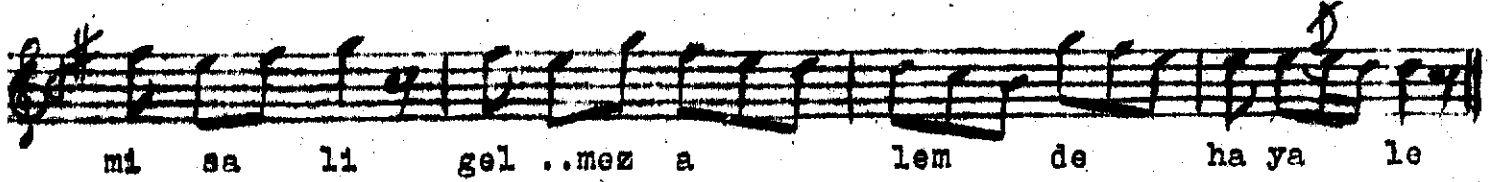
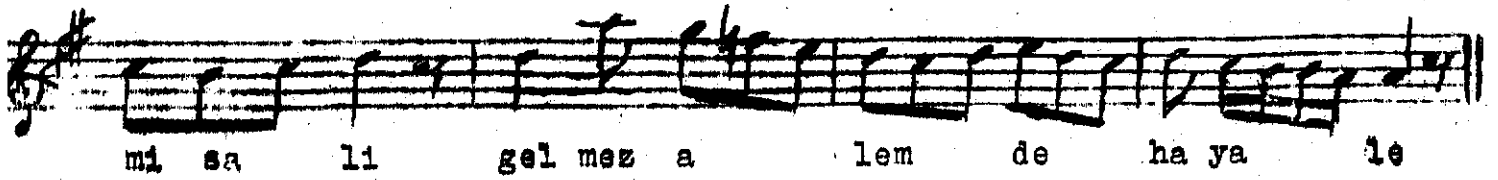


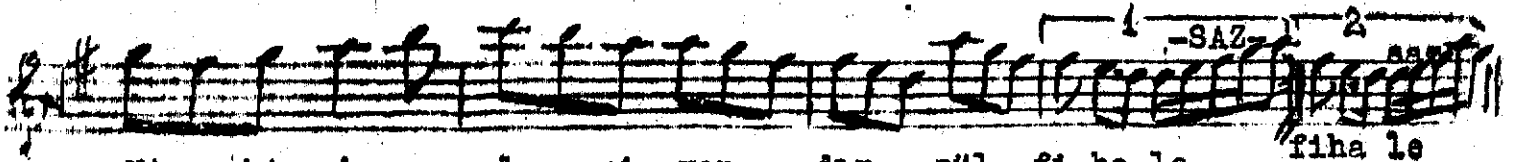
Yi ne bağ.. lan dı dil bir.. nev.. ni ha le



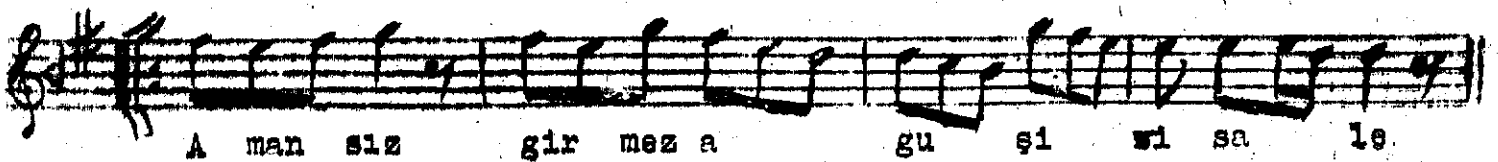
mi sa li gel ..mez a lem de ha ya le



mi sa li gel mez a lem de ha ya le



Ni ge hi ak... la zi yan dır zül fi ha le fi ha le



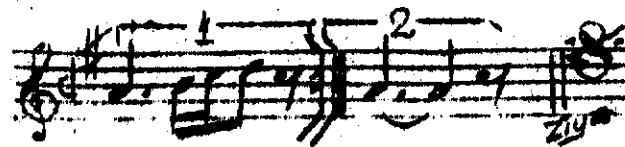
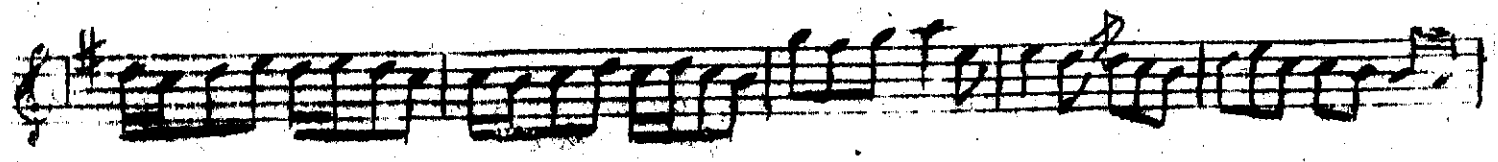
A man siz gir mez a gu şı vi sa le



ne sab ra pa re var ne ar zı ha le



Arabağme



1. Yine bağlandı dil bir nevnihale
Misali gelmez alemde hayale
Nigeh akla ziyandır zülfi hale
Amansız girmez aguşı visale
Ne sabre pare var ne arzı hale.

2.

Dihani gül lebi mül zülfi şebbu
Meyanı mu çeşmi ahu gamze eâdu
Keman ebru periru bir melek bu
Sitem perver vefa düşmen cefa eu
Eser itmez o bi insafe nale.

3.

Melâhat gülşeninde taze bir gül
Felekte elmaz akranı tehayyül
Dökülmüş turra turra oya sünbül
Ruhi taban üzre ebri kâkül
O mahi hüsnе olmuş zülfi hale.

