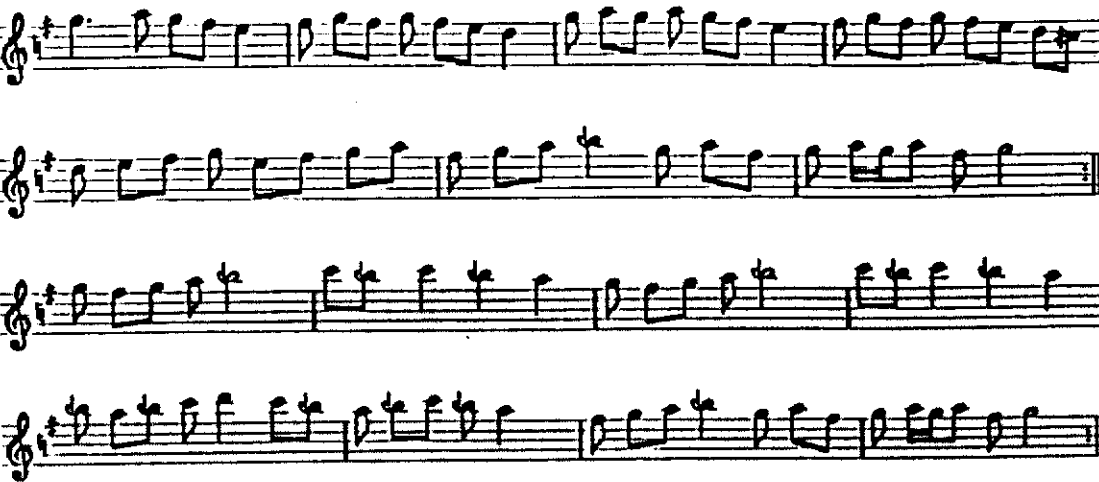


H1 a



1) M 6: the area to be repeated is separated off from the remainder by a vertical bar with, written above, *mülkerr* ('repeated').

H2 a



H3 a



1) H2: a later marginal remark laconically informs us that *hâne-i şîvî haşa'dır* ('H2 is wrong'). The grounds for this verdict are not vouchsafed, but possibly what is alluded to is the fact that H2 a echoes the latter part of the *mıldzime* and might therefore be considered part of it, H2 proper consisting accordingly only of H2 b.

H3 b: another marginal remark in the same hand says *bu terkib ziyâde* ('this subsection is extra'). 3: 1-3: the original has c and B \sharp rather than c' and b \sharp .

H1 b 4: 4 a.

M 16: 2 GA, 3 G.