

[1 = ♩] 187

H1 a

H1 b

M a

1) Here and generally also in the remaining pieces single notes with duration 1 (as in the *semai* section) are for the most part not marked. Where a single time unit is divided between two notes 1 is written beneath, as before, and an additional superscript horizontal bar is added.

In 341 internal divisions within sections are marked by a lozenge, made up of a varying number of dots, with again a superscript horizontal bar. This has been interpreted as equivalent to *ve leh*, i.e. indicating subsections, each to be repeated. H2 is called *miyân hâne*. In both H2 and H3 the convention is adopted of marking some cycle boundaries with the sign τ .

2) 'Alî Ufkî 41v-42r/82-3. 1 = ♩.

H1 a 1: 2 a, 2: 6 f#g, 4: 1-2 g a, 3 ag. 1-4 are to be repeated, 4 *prima volta*: 5-8 c# ga f#g a, 5: 4 g, 5-6 f# g, 6: 2 f#. 5-6 are to be repeated, 6 *seconda volta*: 5-6 c.

H1 b 1: 1 c', 4 d', 5-6 b d, 8 c', 2: 1 a, 5-6 g f#, 3: 2 c, 3-4 c d, 6 B d, 7-8 B d c.

M a 1: 2 a, 3 g, 3: 3 g, 5 a, 4 as H1 a.

b


c



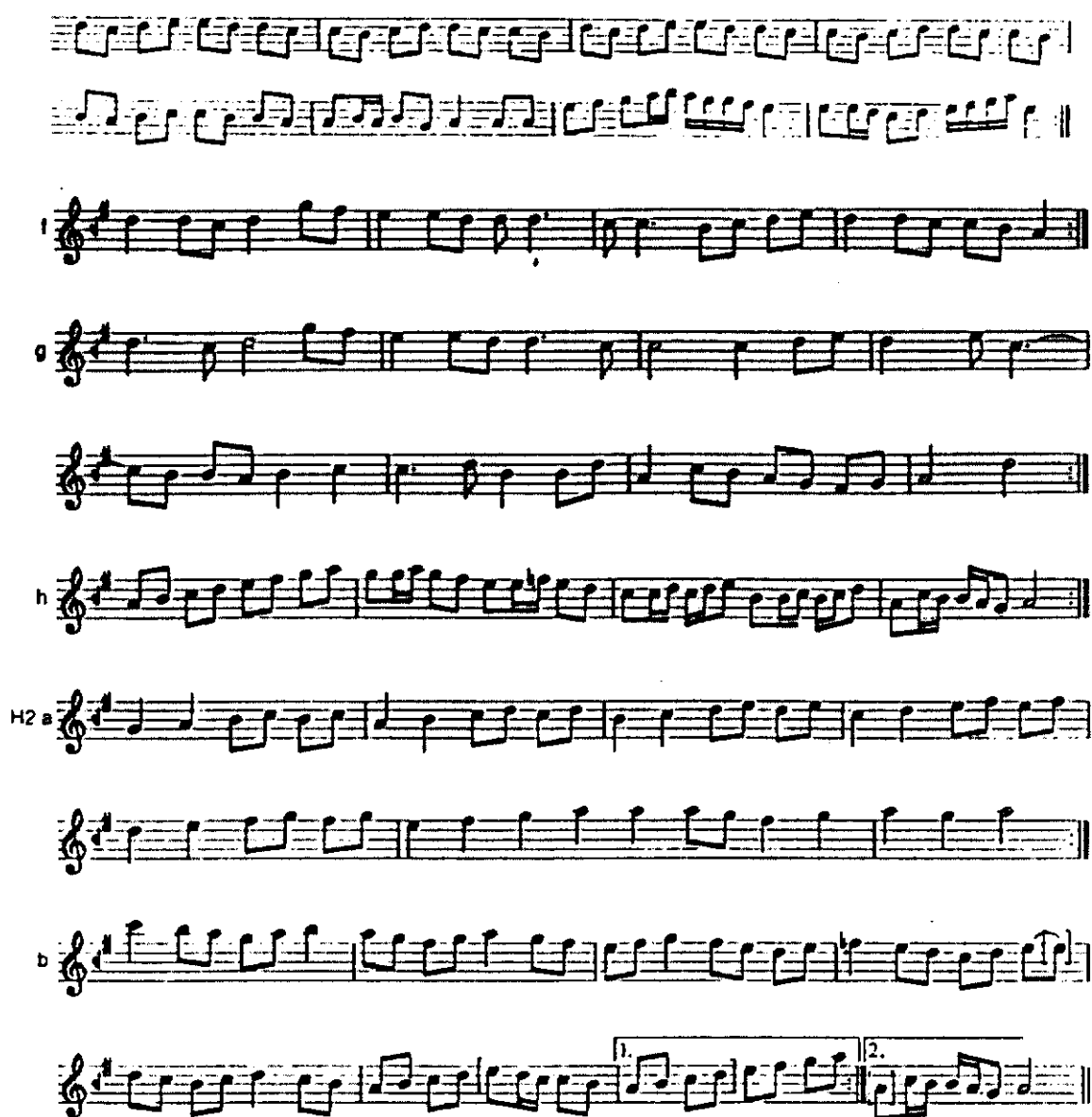
1) M c 2: 7-8 *d* has no duration assigned (i.e. should be 1 = ♩) and is followed by what looks like an inverted semi-colon, which has been given the value of a quaver rest (it could alternatively be interpreted as a miniscule lozenge dividing M c into two subsections). 4: 7-8: here, and below, *prima volta* is indicated by a curved line beneath the notes in question.

M d 2: 4: the original has *G* (♩) *B* (♩).

M c 8: 1-2: the 3 notes are linked by a superscript horizontal bar to share the 2 time units assigned by the numeral below.

2) M b 1: 2 *f#*, 3-4 *f#e* *d*, 5-6 *f#* *g*, 3: 3-4 *c* *d*, 7-8 *Bd* *c*, 4: 

M c 1: 2 *c* ♩ *d* ♩ , -8, 2: 3 *e*, 3: 4 *ed*, 4: 2 *c*, 4 *Bd*, 6 *cBd*, 7-8 *A*. There is no repeat after 4, and the *mülüzime* continues with (equivalent to M d, e, f, and g):



1) H2 b: 4 and what follows is based on the 'Ali Ufki version. The original has no *prima/seconda volta* indications, but rather a lozenge after 6: 1, leaving two incomplete (and unrelated) cycles to follow.

2) M h 3: 3-4 *c d*, 7-8 *Bd c*, 4: 2 *Bd*.

Equivalent to H2 a is:



H2 b 4: 8 *e*, 5: +*d* (before 1), -8. There is no repeat sign after H2 b.

H2 b 7: *seconda volta*: 2 *Bd*, 3 *A*.



1) H3 1: 1-2,7-8: there is no indication of duration. 11: emendation based on the 'Ali Ufki version.
12: 2-3: the original has *Bdc* ♩.

2) H3 4: 5-6 *c' bd*. 1-4 are to be repeated. 5: 3-4 *a g*, 6: 1 *a*, 8: 2 *a*. 5-8 are to be repeated. 11: 2 *cBd*, 9-12 are to be repeated.

teslim: 2 *AA*, 3 *Bd*.