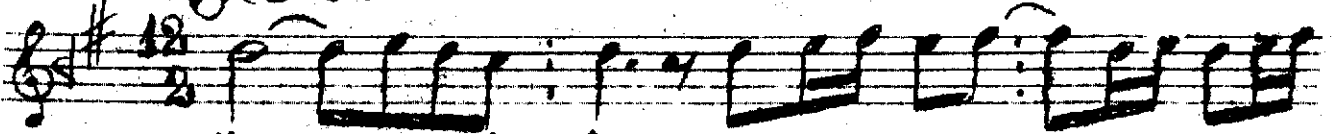


PENCÜGÂH MURABBA BESTE

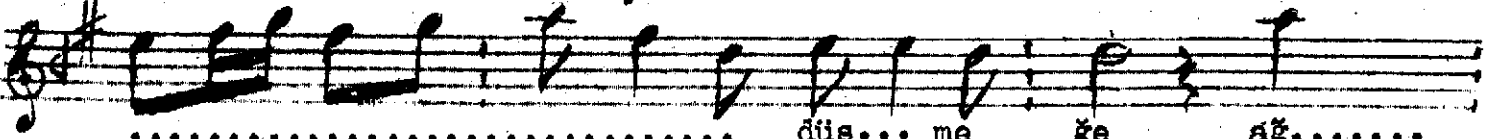
Itrî Mustafa Efendi

Çenber

$\text{♩} = 60$



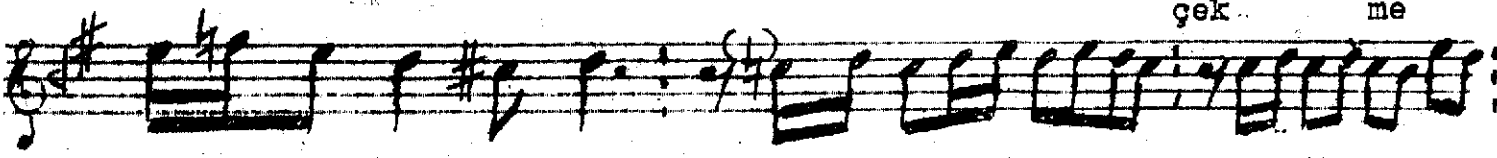
Ah pa yi ya re.....
Ah sa ye sin de
Ah â şı kı fer



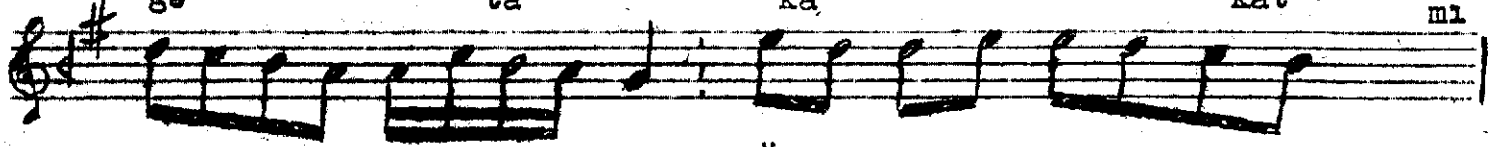
..... düş... me ge ağ.....
nah li ün mi
su de ba zu



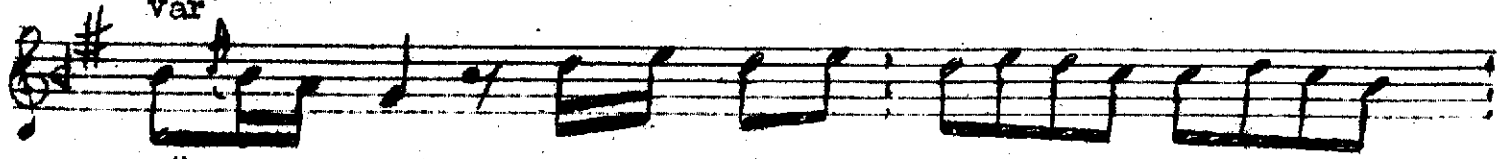
yar.....
din me
gek me



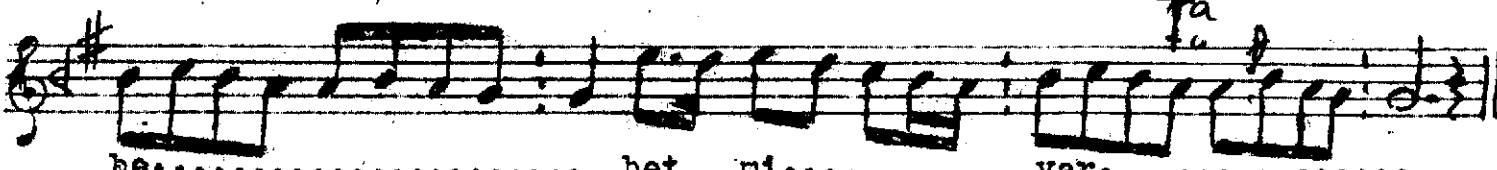
den.....nev..... be..... bet..... mi
ger ra ha hat mi
ge ta ka kat mi



var..... Öm rün yar
var
var



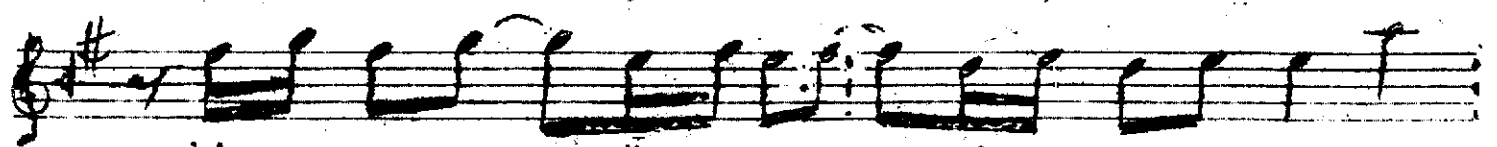
ağ yar den..... nev
ta



bet mi..... var.....
kat mi
var



Ah geh ke ma ni hi.....



hi..... ri..... geh.....

Pencügâh Murabba Beste'nin devamı İtrî Efendi
(Payî yâre düşmeğe)

deh..... ri si

tem..... geh..... ba.....

..... ba.... ri gam..... Öm rüm yar.....

deh..... ri si tem..... geh.....

ba..... ri

gam..... hey ca nım

Payî yâre düşmeğe ağıyarden nevbet mi var ?
Sayesinde nahli ümmidin meğer rahat mı var ?
Geh kemâni hicrî geh dehri sitem geh bari gam
Aşık-ı fersûde bazı çekmeğe takat mi var ?
Ömrüm yar yar yarden nevbet mi var ...