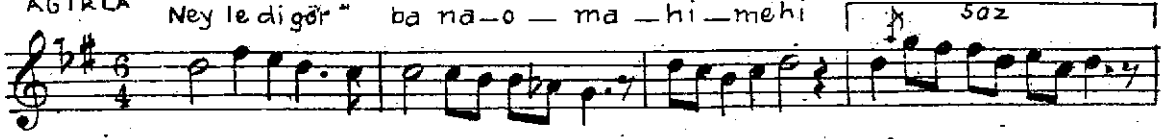


# Suzinâk makamında ve semai ikanda dâğı şarki

Zekâi Dede Efendi

AĞIRCA

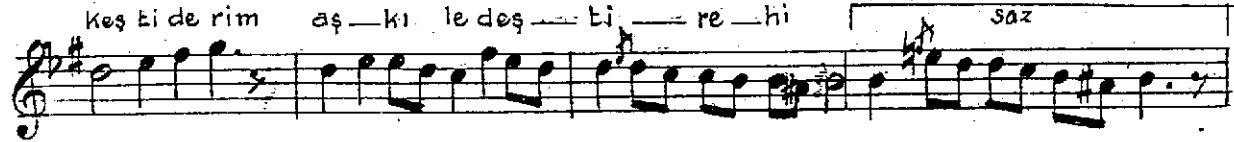
Ney le diğör " ba na-o — ma — hi — mehi



da ga dü şür . dü budi liğ — a — ge — hi



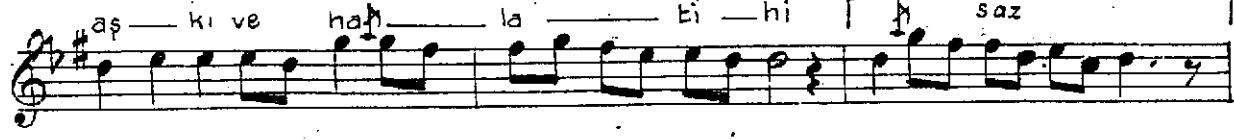
keş ti de rim aş — ki le deş — ti — re — hi



na levü ef ga ni mi san — ma — te — hi ah — mi — nel



aş — ki ve hağ — la — ti — hi



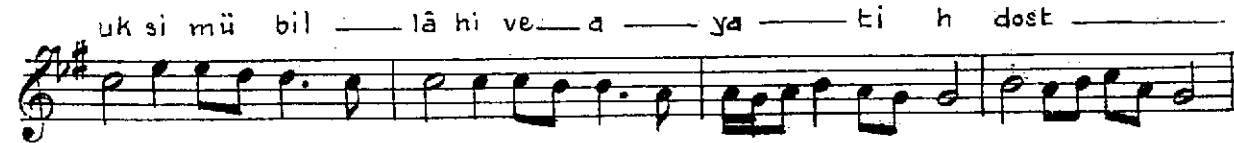
ah ra ka kal bi bi ha ra ra — ti — hi ma na za rel



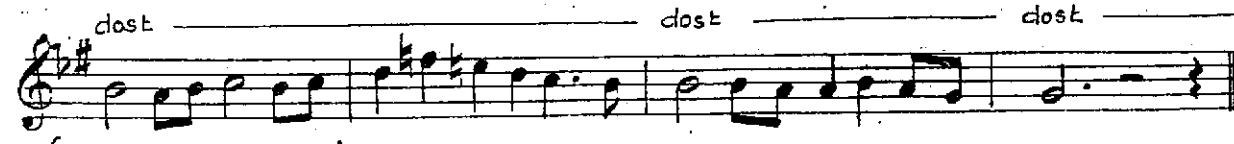
ay — nü i — lâğ — gay — ri — küm



uk si mü bil — lâ hi ve — a — ya — ti h dost



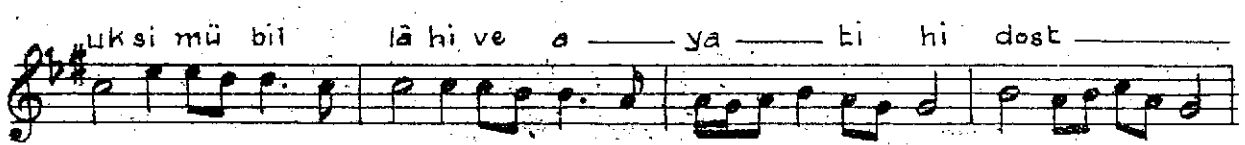
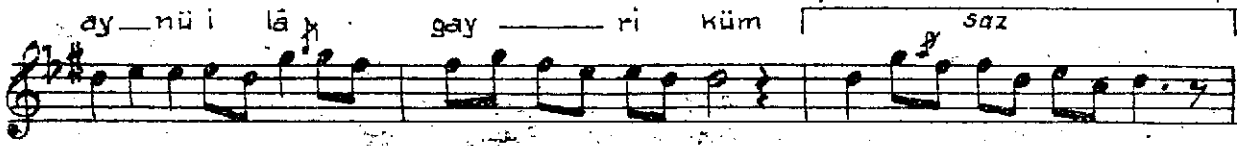
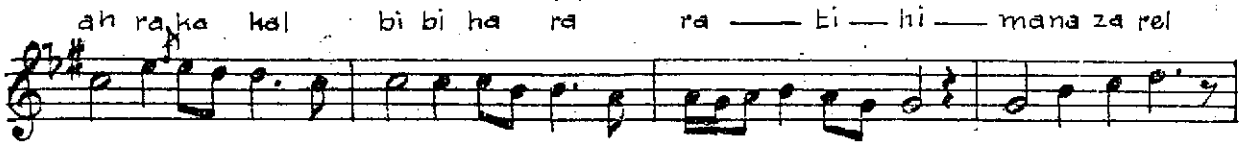
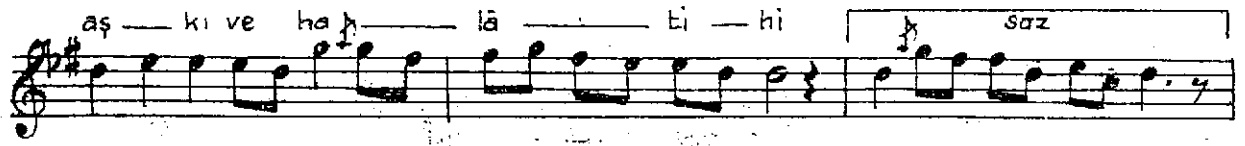
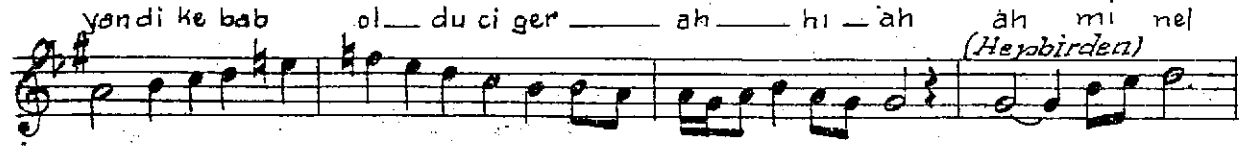
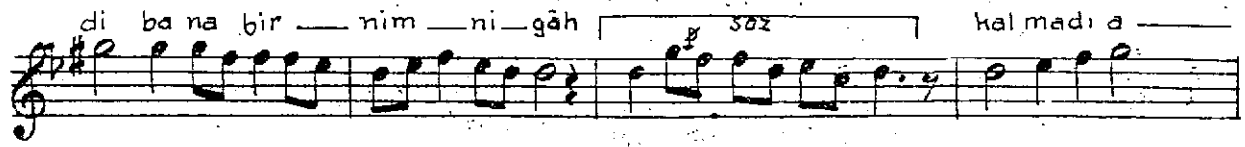
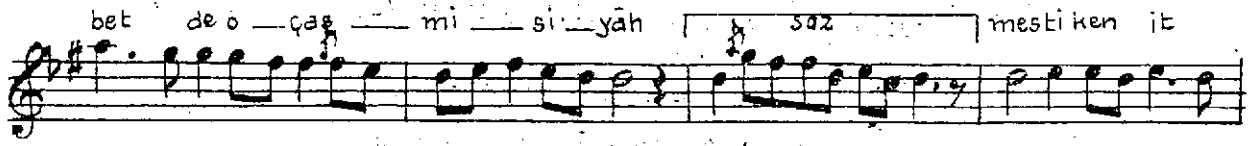
dost — dost — dost



(Bir Kişi Tarafından)

yâr yâr yâr — bezmime hab





### G Ü F T E S İ

Neyledi gör bana omahimehi. daga düşürdü bu dili agehi  
Keş iderim aşkile deştürehî. nalevü efganımı sanma tehi  
Ah-minel aşkı-ve halâtihi. ahraka-kalbi-biharara tihi  
Manazarel-aynü-ila-gayriküm. uksimü-billahi-ve âyâtihi

Dost dost dost dost

Bezmi-mehabbetde-o çeşmi-siyah. mestiken-itdi bana biranim nigâb  
Kalmadı aşkılgıma iştibah. yandı kebab oldu ciger ah ah