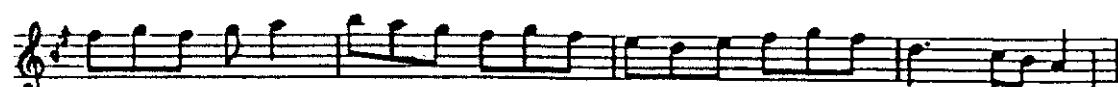
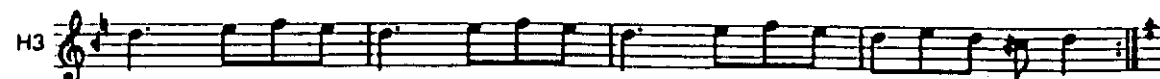


M b 10: 4: there is no specification of duration for *E* and *F#*. A more conventional rhythmic distribution for 9 and 10 could be obtained by giving these two notes the expected value  $\text{♪}$ , and either omitting 9: 1 or, with Sanal, 8: 5 (in both cases, however, thereby emending one of Cantemir's explicit indications of duration).



3) Sanal 182-3. 1 =  $\text{♪}$ . Suggested tempo  $\text{♪}$  = 196.

M a 2: 3 *Bd*.

M b 8: -5, 9: 2 *F#G*, 10: 3 *F#*, 4 *E♪F#♪*.

H2 b 6: 1 *b*, 8: 4 *cBb*.

teslim: this is considered a *seconda volta* variant for the last 3 time units of H3.