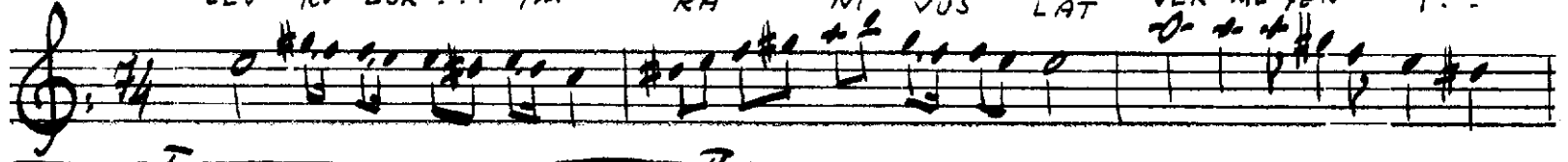


SUZİDİE ŞARKI

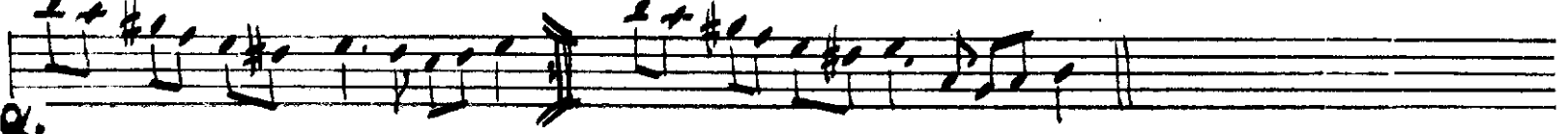
Övünçlü

Pehlivi Tokay

CEV RO LUR ... im KÂ NI VUS LAT VER MEYEN i..



MA I LA RIN - SAZ II MA II LA RIN - SAZ



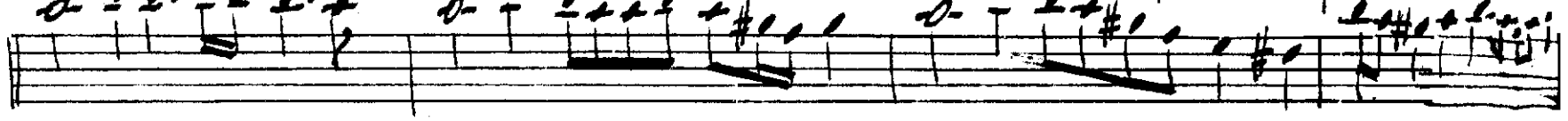
ZUL MO LUR AR TIK BU GÜ NA NA ZÜ İS TİĞ



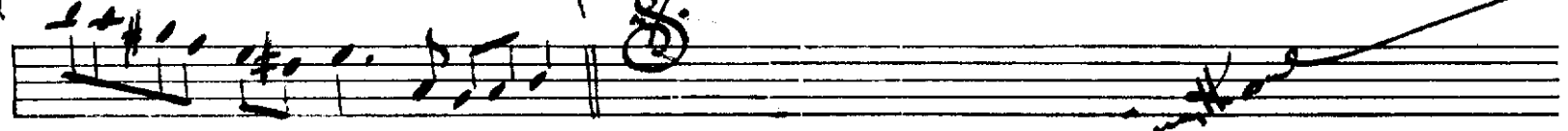
NA I LA RIN - SAZ II NA II LA RIN - SAZ



GÜN GE LİR EL DEN Gİ DER EL BET SA HA RI ... HÜS NÜ NÜN



İHÜS NÜ NÜN - SAZ



ARANAĞME.



Cevrolun inkâr-ı, meslek ver meyen imâlanın
Zulmetin ardık lın gümüş nazî istighnâların
Gün gelir, elden gider elbet bahar. hüsnün
Yangisi kalın, cihan da dem sünen deylâtan