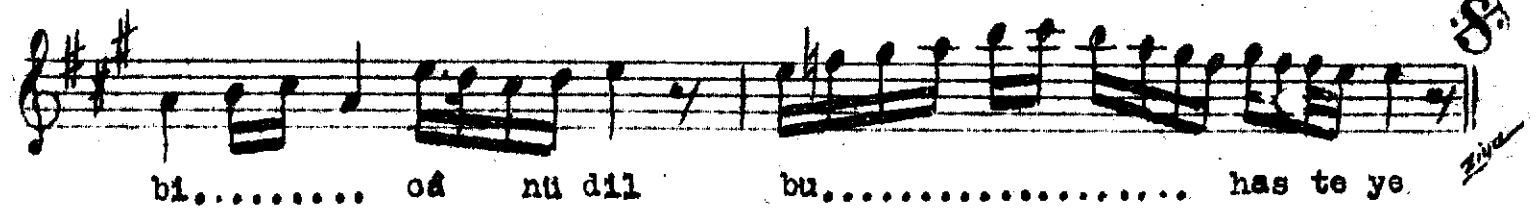
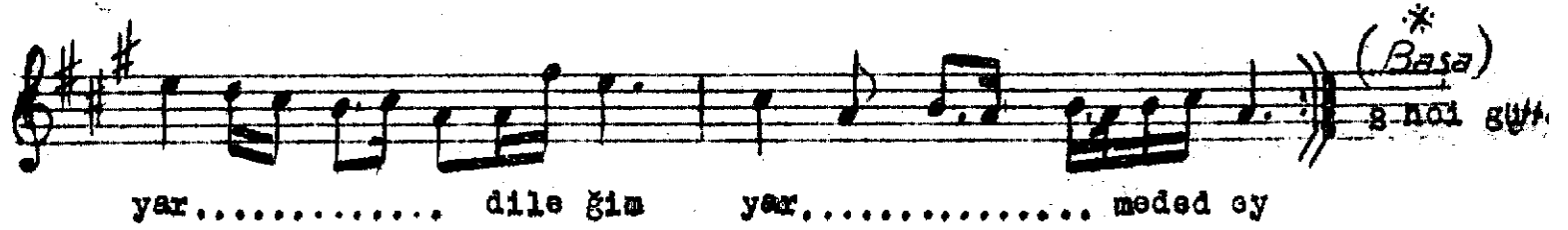
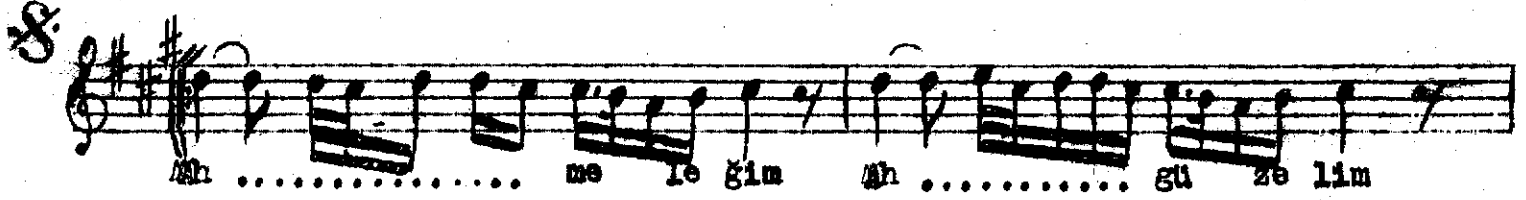
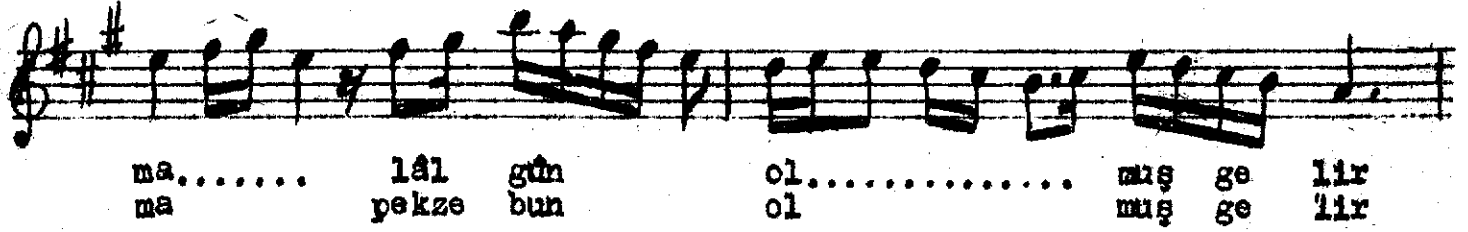


N İ Ş A B Ü R E K A Ğ I R S E M A İ Enfi Hasan Ağa



oâme-1 sürhile sanma lâl gûn olmuş gelir
Ah meleğim ah güzelim yar dileğim yar medet ey
Caresaz ol ey tabib-i oan-û dil bu hasteye
Âteş-i aşkınla bakma pek, zebun olmuş gelir.