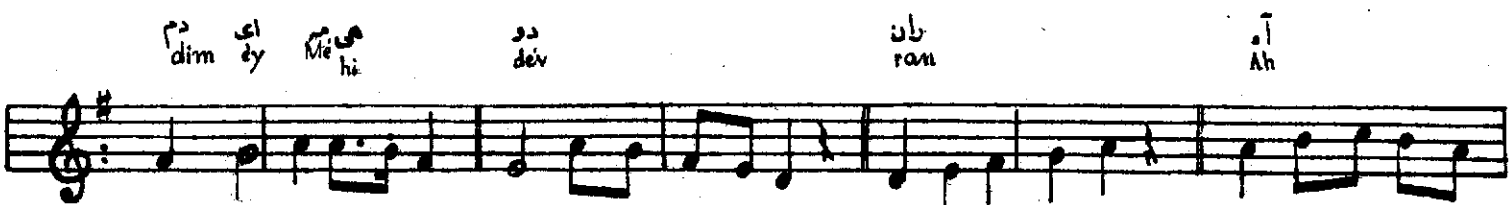
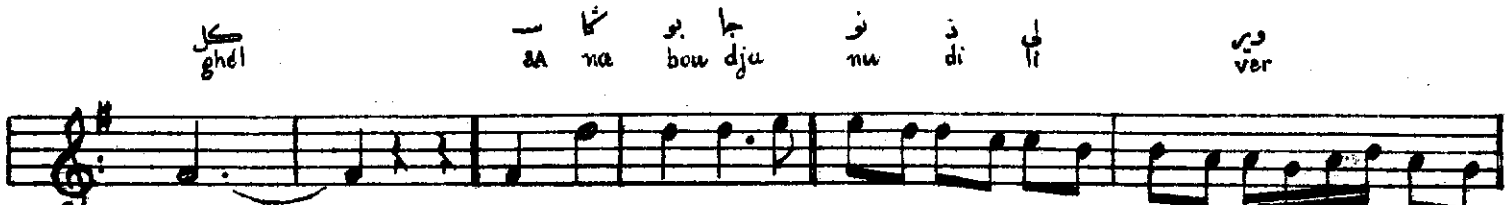
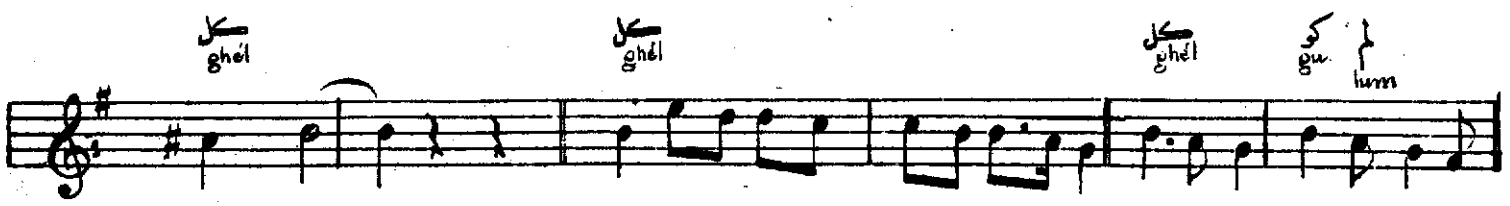
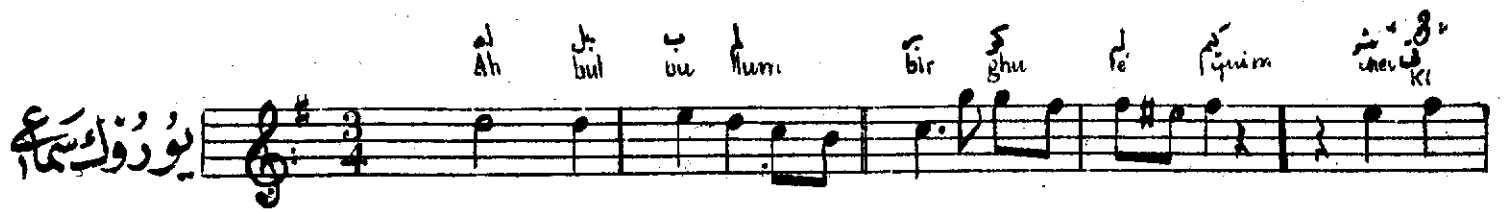


د لال زاده اسماعیل آغده نیک بیا وړ وک سماعی



سپاخان: Ah al li bir Ah d chi quon ya na

دو du شور chur دم dum که qui نه ne' نیم نیم bé لی li بی bé لی li

[illegible]

vedj hi mu nev ver per jahon tahé mi sun

The first line of musical notation is written on a single staff with a treble clef and a key signature of one sharp (F#). The melody consists of the following notes: D4 (quarter), E4 (quarter), F#4 (quarter), G4 (quarter), A4 (quarter), B4 (quarter), C5 (quarter), B4 (quarter), A4 (quarter), G4 (quarter), F#4 (quarter), E4 (quarter), D4 (quarter), C4 (half). The lyrics are written above the staff, with some words in Cyrillic and others in Latin script. The word 'jahon' is written in Cyrillic with a superscript 'n' and a tilde, and 'per' is written in Latin script.

bul ru hi ghul bā lē ri Mul dur ā

The first line of musical notation is written on a single staff with a treble clef and a key signature of one sharp (F#). The notes are: bul (quarter note), ru (quarter note), hi (quarter note), ghul (quarter note), bā (quarter note), lē (quarter note), ri (quarter note), Mul (quarter note), dur (quarter note), and ā (quarter note). The lyrics are written above the notes.

Handwritten musical notation on a single staff with a treble clef and a key signature of one sharp (F#). The notes are: D4 (quarter), E4 (quarter), F#4 (quarter), G4 (quarter), A4 (quarter), B4 (quarter), C5 (quarter), B4 (quarter), A4 (quarter), G4 (quarter), F#4 (quarter), E4 (quarter), D4 (quarter). Above the staff, there are handwritten labels in Arabic script: 'dja' above the first note, 'nim' above the second note, 'geh' above the third note, 'ghel' above the fourth note, and 'ghel' above the fifth note.

ghu lum ghel sa na bou dja nu di li ver

The first line of musical notation is on a single staff with a treble clef and a key signature of one sharp (F#). The melody consists of the following notes: G4 (quarter), A4 (quarter), B4 (quarter), C5 (quarter), B4-A4 (beamed eighth notes), G4 (quarter), F#4 (quarter), E4 (quarter), D4 (half), C4 (half), B3 (quarter), A3 (quarter), G3 (quarter), F#3 (quarter), E3 (quarter), D3 (half), C3 (half), B2 (quarter), A2 (quarter), G2 (quarter), F#2 (quarter), E2 (quarter), D2 (half), C2 (half), B1 (quarter), A1 (quarter), G1 (quarter), F#1 (quarter), E1 (quarter), D1 (half), C1 (half), B0 (quarter), A0 (quarter), G0 (quarter), F#0 (quarter), E0 (quarter), D0 (half), C0 (half), B-1 (quarter), A-1 (quarter), G-1 (quarter), F#-1 (quarter), E-1 (quarter), D-1 (half), C-1 (half), B-2 (quarter), A-2 (quarter), G-2 (quarter), F#-2 (quarter), E-2 (quarter), D-2 (half), C-2 (half), B-3 (quarter), A-3 (quarter), G-3 (quarter), F#-3 (quarter), E-3 (quarter), D-3 (half), C-3 (half), B-4 (quarter), A-4 (quarter), G-4 (quarter), F#-4 (quarter), E-4 (quarter), D-4 (half), C-4 (half), B-5 (quarter), A-5 (quarter), G-5 (quarter), F#-5 (quarter), E-5 (quarter), D-5 (half), C-5 (half), B-6 (quarter), A-6 (quarter), G-6 (quarter), F#-6 (quarter), E-6 (quarter), D-6 (half), C-6 (half), B-7 (quarter), A-7 (quarter), G-7 (quarter), F#-7 (quarter), E-7 (quarter), D-7 (half), C-7 (half), B-8 (quarter), A-8 (quarter), G-8 (quarter), F#-8 (quarter), E-8 (quarter), D-8 (half), C-8 (half), B-9 (quarter), A-9 (quarter), G-9 (quarter), F#-9 (quarter), E-9 (quarter), D-9 (half), C-9 (half), B-10 (quarter), A-10 (quarter), G-10 (quarter), F#-10 (quarter), E-10 (quarter), D-10 (half), C-10 (half), B-11 (quarter), A-11 (quarter), G-11 (quarter), F#-11 (quarter), E-11 (quarter), D-11 (half), C-11 (half), B-12 (quarter), A-12 (quarter), G-12 (quarter), F#-12 (quarter), E-12 (quarter), D-12 (half), C-12 (half), B-13 (quarter), A-13 (quarter), G-13 (quarter), F#-13 (quarter), E-13 (quarter), D-13 (half), C-13 (half), B-14 (quarter), A-14 (quarter), G-14 (quarter), F#-14 (quarter), E-14 (quarter), D-14 (half), C-14 (half), B-15 (quarter), A-15 (quarter), G-15 (quarter), F#-15 (quarter), E-15 (quarter), D-15 (half), C-15 (half), B-16 (quarter), A-16 (quarter), G-16 (quarter), F#-16 (quarter), E-16 (quarter), D-16 (half), C-16 (half), B-17 (quarter), A-17 (quarter), G-17 (quarter), F#-17 (quarter), E-17 (quarter), D-17 (half), C-17 (half), B-18 (quarter), A-18 (quarter), G-18 (quarter), F#-18 (quarter), E-18 (quarter), D-18 (half), C-18 (half), B-19 (quarter), A-19 (quarter), G-19 (quarter), F#-19 (quarter), E-19 (quarter), D-19 (half), C-19 (half), B-20 (quarter), A-20 (quarter), G-20 (quarter), F#-20 (quarter), E-20 (quarter), D-20 (half), C-20 (half), B-21 (quarter), A-21 (quarter), G-21 (quarter), F#-21 (quarter), E-21 (quarter), D-21 (half), C-21 (half), B-22 (quarter), A-22 (quarter), G-22 (quarter), F#-22 (quarter), E-22 (quarter), D-22 (half), C-22 (half), B-23 (quarter), A-23 (quarter), G-23 (quarter), F#-23 (quarter), E-23 (quarter), D-23 (half), C-23 (half), B-24 (quarter), A-24 (quarter), G-24 (quarter), F#-24 (quarter), E-24 (quarter), D-24 (half), C-24 (half), B-25 (quarter), A-25 (quarter), G-25 (quarter), F#-25 (quarter), E-25 (quarter), D-25 (half), C-25 (half), B-26 (quarter), A-26 (quarter), G-26 (quarter), F#-26 (quarter), E-26 (quarter), D-26 (half), C-26 (half), B-27 (quarter), A-27 (quarter), G-27 (quarter), F#-27 (quarter), E-27 (quarter), D-27 (half), C-27 (half), B-28 (quarter), A-28 (quarter), G-28 (quarter), F#-28 (quarter), E-28 (quarter), D-28 (half), C-28 (half), B-29 (quarter), A-29 (quarter), G-29 (quarter), F#-29 (quarter), E-29 (quarter), D-29 (half), C-29 (half), B-30 (quarter), A-30 (quarter), G-30 (quarter), F#-30 (quarter), E-30 (quarter), D-30 (half), C-30 (half), B-31 (quarter), A-31 (quarter), G-31 (quarter), F#-31 (quarter), E-31 (quarter), D-31 (half), C-31 (half), B-32 (quarter), A-32 (quarter), G-32 (quarter), F#-32 (quarter), E-32 (quarter), D-32 (half), C-32 (half), B-33 (quarter), A-33 (quarter), G-33 (quarter), F#-33 (quarter), E-33 (quarter), D-33 (half), C-33 (half), B-34 (quarter), A-34 (quarter), G-34 (quarter), F#-34 (quarter), E-34 (quarter), D-34 (half), C-34 (half), B-35 (quarter), A-35 (quarter), G-35 (quarter), F#-35 (quarter), E-35 (quarter), D-35 (half), C-35 (half), B-36 (quarter), A-36 (quarter), G-36 (quarter), F#-36 (quarter), E-36 (quarter), D-36 (half), C-36 (half), B-37 (quarter), A-37 (quarter), G-37 (quarter), F#-37 (quarter), E-37 (quarter), D-37 (half), C-37 (half), B-38 (quarter), A-38 (quarter), G-38 (quarter), F#-38 (quarter), E-38 (quarter), D-38 (half), C-38 (half), B-39 (quarter), A-39 (quarter), G-39 (quarter), F#-39 (quarter), E-39 (quarter), D-39 (half), C-39 (half), B-40 (quarter), A-40 (quarter), G-40 (quarter), F#-40 (quarter), E-40 (quarter), D-40 (half), C-40 (half), B-41 (quarter), A-41 (quarter), G-41 (quarter), F#-41 (quarter), E-41 (quarter), D-41 (half), C-41 (half), B-42 (quarter), A-42 (quarter), G-42 (quarter), F#-42 (quarter), E-42 (quarter), D-42 (half), C-42 (half), B-43 (quarter), A-43 (quarter), G-43 (quarter), F#-43 (quarter), E-43 (quarter), D-43 (half), C-43 (half), B-44 (quarter), A-44 (quarter), G-44 (quarter), F#-44 (quarter), E-44 (quarter), D-44 (half), C-44 (half), B-45 (quarter), A-45 (quarter), G-45 (quarter), F#-45 (quarter), E-45 (quarter), D-45 (half), C-45 (half), B-46 (quarter), A-46 (quarter), G-46 (quarter), F#-46 (quarter), E-46 (quarter), D-46 (half), C-46 (half), B-47 (quarter), A-47 (quarter), G-47 (quarter), F#-47 (quarter), E-47 (quarter), D-47 (half), C-47 (half), B-48 (quarter), A-48 (quarter), G-48 (quarter), F#-48 (quarter), E-48 (quarter), D-48 (half), C-48 (half), B-49 (quarter), A-49 (quarter), G-49 (quarter), F#-49 (quarter), E-49 (quarter), D-49 (half), C-49 (half), B-50 (quarter), A-50 (quarter), G-50 (quarter), F#-50 (quarter), E-50 (quarter), D-50 (half), C-50 (half), B-51 (quarter), A-51 (quarter), G-51 (quarter), F#-51 (quarter), E-51 (quarter), D-51 (half), C-51 (half), B-52 (quarter), A-52 (quarter), G-52 (quarter), F#-52 (quarter), E-52 (quarter), D-52 (half), C-52 (half), B-53 (quarter), A-53 (quarter), G-53 (quarter), F#-53 (quarter), E-53 (quarter), D-53 (half), C-53 (half), B-54 (quarter), A-54 (quarter), G-54 (quarter), F#-54 (quarter), E-54 (quarter), D-54 (half), C-54 (half), B-55 (quarter), A-55 (quarter), G-55 (quarter), F#-55 (quarter), E-55 (quarter), D-55 (half), C-55 (half), B-56 (quarter), A-56 (quarter), G-56 (quarter), F#-56 (quarter), E-56 (quarter), D-56 (half), C-56 (half), B-57 (quarter), A-57 (quarter), G-57 (quarter), F#-57 (quarter), E-57 (quarter), D-57 (half), C-57 (half), B-58 (quarter), A-58 (quarter), G-58 (quarter), F#-58 (quarter), E-58 (quarter), D-58 (half), C-58 (half), B-59 (quarter), A-59 (quarter), G-59 (quarter), F#-59 (quarter), E-59 (quarter), D-59 (half), C-59 (half), B-60 (quarter), A-60 (quarter), G-60 (quarter), F#-60 (quarter), E-60 (quarter), D-60 (half), C-60 (half), B-61 (quarter), A-61 (quarter), G-61 (quarter), F#-61 (quarter), E-61 (quarter), D-61 (half), C-61 (half), B-62 (quarter), A-62 (quarter), G-62 (quarter), F#-62 (quarter), E-62 (quarter), D-62 (half), C-62 (half), B-63 (quarter), A-63 (quarter), G-63 (quarter), F#-63 (quarter), E-63 (quarter), D-63 (half), C-63 (half), B-64 (quarter), A-64 (quarter), G-64 (quarter), F#-64 (quarter), E-64 (quarter), D-64 (half), C-64 (half), B-65 (quarter), A-65 (quarter), G-65 (quarter), F#-65 (quarter), E-65 (quarter), D-65 (half), C-65 (half), B-66 (quarter), A-66 (quarter), G-66 (quarter), F#-66 (quarter), E-66 (quarter), D-66 (half), C-66 (half), B-67 (quarter), A-67 (quarter), G-67 (quarter), F#-67 (quarter), E-67 (quarter), D-67 (half), C-67 (half), B-68 (quarter), A-68 (quarter), G-68 (quarter), F#-68 (quarter), E-68 (quarter), D-68 (half), C-68 (half), B-69 (quarter), A-69 (quarter), G-69 (quarter), F#-69 (quarter), E-69 (quarter), D-69 (half), C-69 (half), B-70 (quarter), A-70 (quarter), G-70 (quarter), F#-70 (quarter), E-70 (quarter), D-70 (half), C-70 (half), B-71 (quarter), A-71 (quarter), G-71 (quarter), F#-71 (quarter), E-71 (quarter), D-71 (half), C-71 (half), B-72 (quarter), A-72 (quarter), G-72 (quarter), F#-72 (quarter), E-72 (quarter), D-72 (half), C-72 (half), B-73 (quarter), A-73 (quarter), G-73 (quarter), F#-73 (quarter), E-73 (quarter), D-73 (half), C-73 (half), B-74 (quarter), A-74 (quarter), G-74 (quarter), F#-74 (quarter), E-74 (quarter), D-74 (half), C-74 (half), B-75 (quarter), A-75 (quarter), G-75 (quarter), F#-75 (quarter), E-75 (quarter), D-75 (half), C-75 (half), B-76 (quarter), A-76 (quarter), G-76 (quarter), F#-76 (quarter), E-76 (quarter), D-76 (half), C-76 (half), B-77 (quarter), A-77 (quarter), G-77 (quarter), F#-77 (quarter), E-77 (quarter), D-77 (half), C-77 (half), B-78 (quarter), A-78 (quarter), G-78 (quarter), F#

dim ey Me hi dev ran Ah

A musical staff with a treble clef and a key signature of one sharp (F#). The melody consists of the following notes: G4 (quarter), A4 (quarter), B4 (quarter), A4-G4 (beamed eighth notes), F#4 (quarter), E4 (quarter), D4 (half). There are rests after the D4 note and after the E4 note. The final note is A4 (quarter).

ٲٲ
 Ah

ٲٲ
 Ah

دو می شه ای
 du mi she ay

ران
 ran

A musical score on a single staff with a treble clef and a key signature of one sharp (F#). The melody consists of the following notes: G4 (quarter), A4 (quarter), B4 (quarter), A4-G4 (beamed eighth notes), F#4 (quarter), E4 (quarter), D4 (half). The lyrics are written above the staff: 'ٲٲ' (Ah) above the first G, 'ٲٲ' (Ah) above the first A, 'دو می شه ای' (du mi sheh ay) above the notes from B to E, and 'ران' (ran) above the final D. The 'ran' is written as 'ran' in the original image.