

Gülnihal

Hammâmîzâde İsmâil Dede Efendi

Musical score for Gülnihal, featuring a treble clef, key signature of three flats (B-flat, E-flat, A-flat), and a 3/4 time signature. The score is divided into five systems, each with a key signature change indicated above the staff.

System 1: Key signature: A-flat. The staff begins with a treble clef and a 3/4 time signature. The melody consists of a series of eighth and quarter notes.

System 2: Key signature: B-flat minor. The staff continues the melody. A key signature change to B-flat minor is indicated above the staff. The melody includes a repeat sign with two endings.

System 3: Key signature: A-flat. The staff continues the melody. A key signature change to A-flat is indicated above the staff. The melody includes a repeat sign with two endings.

System 4: Key signature: B-flat minor. The staff continues the melody. A key signature change to B-flat minor is indicated above the staff. The melody includes a repeat sign with two endings.

System 5: Key signature: A-flat. The staff continues the melody. A key signature change to A-flat is indicated above the staff. The melody includes a repeat sign with two endings.

The score is watermarked with "KlasikGen" in the background.

Gülnihal p. 2

D^b E^b B^bm A^b Fm B^bm E^b7



A^b A^b Fm D^bmaj⁷ E^bdim⁷ Fm



A^b D^b E^b B^bm A^b



Fm B^bm E^b7 A^b A^b



biSGen

Gülnihal

Hammâmîzâde İsmâil Dede Efendi

A D

A B_m E⁷ A D E

B_m A F_{#m} B_m E⁷

A A A B_m E⁷ A

A B_m E⁷ A E⁷ A

1. 2.

1. 2.

1. 2.

Gülnihal p. 2

D E Bm A F#m Bm E⁷



A A F#m Dmaj⁷ Fdim⁷ F#m



A D E Bm A



F#m Bm E⁷ A A



Gülnihal

Hammâmîzâde İsmâil Dede Efendi

♭³ ♭⁴

♭³ ♭⁴

1. 2.

1. 2.

1. 2.

Gülnihal p. 2

$$E^b \quad F \quad C_m \quad B^b \quad G_m \quad C_m \quad F^7$$

$$\mathfrak{B}^b \quad \mathfrak{B}^b \quad \mathbb{G}_m \quad \mathbb{E}^b_{\text{maj}^7} \quad \mathbb{F}^\#_{\text{dim}^7} \quad \mathbb{G}_m$$
 $\mathfrak{B}^b \quad \mathbb{E}^b \quad \mathbb{F} \quad \mathbb{C}_m \quad \mathfrak{B}^b$ 

Gm Cm F⁷ B^b B^b



biSGen

Gülnihal p. 2

E F# C#m B G#m C#m F#7



B B G#m Emaj7 Gdim7 G#m



B E F# C#m B



G#m C#m F#7 B B



Gülnihal

Hammâmîzâde İsmâil Dede Efendi

Sheet music for the song "Gülnihal" by Hammâmîzâde İsmâil Dede Efendi. The music is written in 3/4 time and features a variety of chords and melodic lines.

The first staff shows the beginning of the melody in 3/4 time, starting with a common time signature (C) and a key signature of one sharp (F#).

The second staff introduces the first system of chords: C, Dm, G⁷, C, F, and G. The melody is written in a single line, with a repeat sign and first/second endings indicated.

The third staff continues the melody with chords Dm, C, Am, Dm, and G⁷. The melody is written in a single line, with a repeat sign and first/second endings indicated.

The fourth staff continues the melody with chords C, C, C, Dm, G⁷, and C. The melody is written in a single line, with a repeat sign and first/second endings indicated.

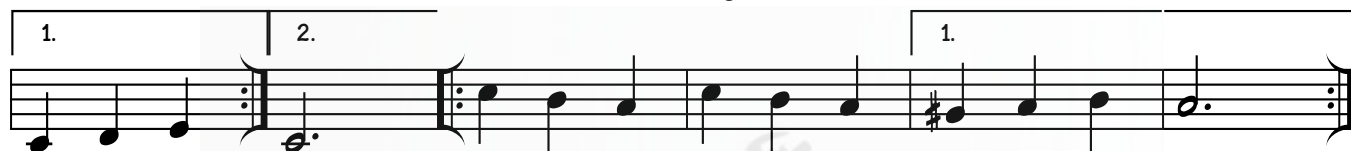
The fifth staff continues the melody with chords C, Dm, G⁷, C, G⁷, and C. The melody is written in a single line, with a repeat sign and first/second endings indicated.

Gülnihal p. 2

F G Dm C Am Dm G⁷



C C Am Fmaj⁷ G[#]dim⁷ Am



C F G Dm C



Am Dm G⁷ C C



Gülnihal

Hammâmîzâde İsmâil Dede Efendi

0 G

0 Em A⁷ 0 G A

Em 0 Bm Em A⁷

0 0 0 Em A⁷ 0

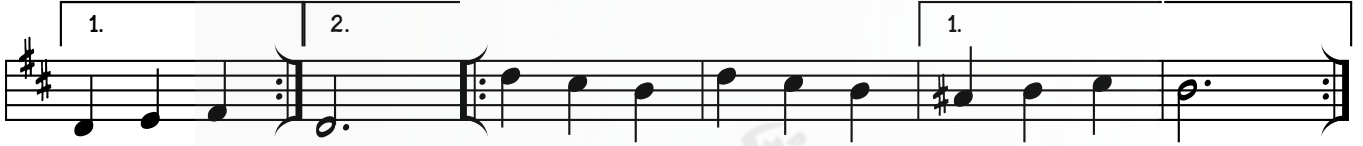
0 Em A⁷ 0 A⁷ 0

Gülnihal p. 2

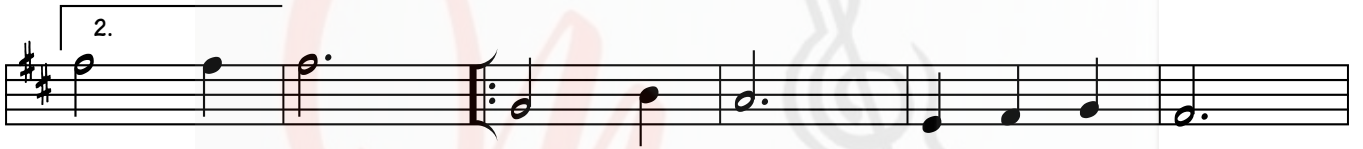
G A Em D Bm Em A⁷



D D Bm Gmaj⁷ A#dim⁷ Bm



D G A Em D



Bm Em A⁷ D D



Gülnihal

Hammâmîzâde İsmâil Dede Efendi

Sheet music for the song "Gülnihal" by Hammâmîzâde İsmâil Dede Efendi. The music is written in 3/4 time, key of E-flat major (three flats), and features various chords and melodic lines.

The chords indicated above the staff are:

- E^b
- A^b
- E^b
- F^m
- B^b7
- E^b
- A^b
- B^b
- F^m
- E^b
- C^m
- F^m
- B^b7
- E^b
- E^b
- E^b
- F^m
- B^b7
- E^b
- E^b
- F^m
- B^b7
- E^b
- B^b7
- E^b

The melody is written on a single staff with a treble clef. The time signature is 3/4. The key signature is E-flat major (three flats). The music includes repeat signs and first/second endings.



Gülnihal p. 2

A^b B^b F^m E^b C^m F^m B^b7



E^b E^b C^m A^b maj⁷ B^b dim⁷ C^m



E^b A^b B^b F^m E^b



C^m F^m B^b7 E^b E^b



Gülnihal

Hammâmîzâde İsmâil Dede Efendi

Ε Α

Ε F#m B⁷ Ε Α B

F#m Ε C#m F#m B⁷

Ε Ε Ε F#m B⁷ Ε

Ε F#m B⁷ Ε B⁷ Ε

1. 2.

1. 2.

1. 2.

Gülnihal p. 2

A B F[#]_m E C[#]_m F[#]_m B⁷


$$\mathbb{E} \quad \mathbb{E} \quad \mathbb{C}^{\#}_m \quad A_{mqj}^7 \quad \mathbb{C}^{\dim}_7 \quad \mathbb{C}^{\#}_m$$


E	A	B	$F_m^\#$	E
-----	-----	-----	----------	-----


$$\mathbb{C}^{\#_m} \quad \mathbb{F}^{\#_m} \quad \mathcal{B}^7 \quad \mathbb{E} \quad \mathbb{E}$$


biSGer

Gülnihal

Hammâmîzâde İsmâil Dede Efendi

F B^b

F Gm C⁷ F B^b C

Gm F Dm Gm C⁷

F F F Gm C⁷ F

F Gm C⁷ F C⁷ F

1. 2.

1. 2.

1. 2.

Gülnihal p. 2

biSGen

Gülnihal

Hammâmîzâde İsmâil Dede Efendi

G C

G Am D⁷ G C D

Am G Em Am D⁷

G G G Am D⁷ G

G Am D⁷ G D⁷ G

Gülnihal p. 2

C D Am G Em Am D⁷



G G Em Cmaj⁷ D[#]dim⁷ Em



G C D Am G



Em Am D⁷ G G

