

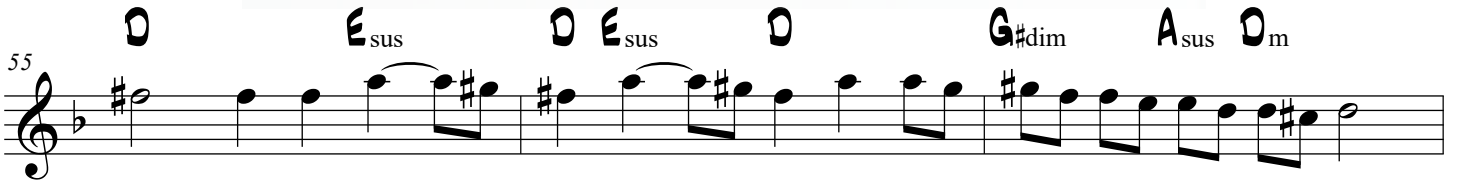
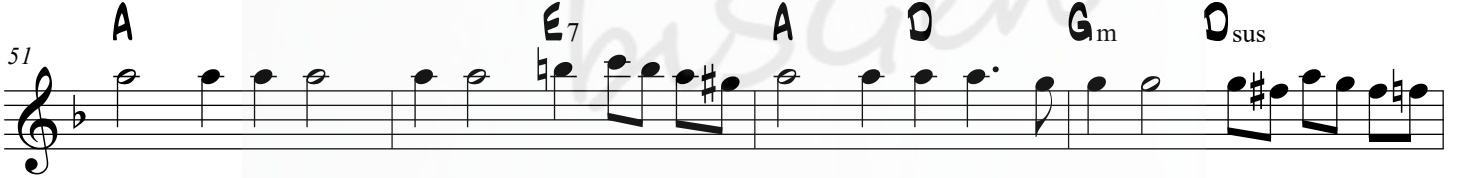
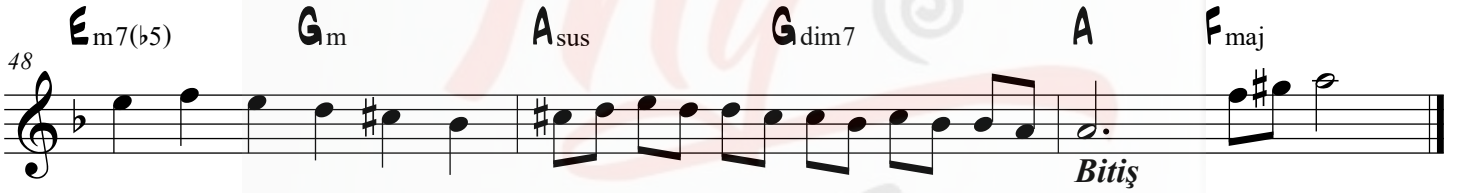
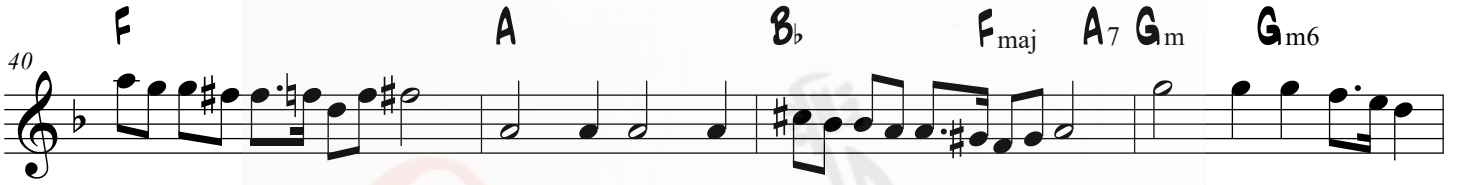
Yine Neşe-i Muhabbet

İsmâil Dede Efendi

Chord progression for the song "Yine Neşe-i Muhabbet" by İsmâil Dede Efendi. The music is in 9/4 time and features a variety of chords including A, C#dim, Em7(b5), Asus, Dm, A7, Bb, Gm, and A.

Chord progression (measures 1-28):

- Measures 1-4: A, C#dim, Em7(b5), Asus, A, C#dim, Em7(b5), Asus
- Measures 5-8: A, Dm, A7, Bb, Gm, A
- Measures 9-12: C#dim, D, Gm, A7, Dm, A, D
- Measures 13-16: Gm, A7, Dm, Em7(b5), Bb, Gm, A
- Measures 17-20: A7, Gm6, Em7(b5), Bb, A, Em7(b5), Dm
- Measures 21-24: A7, D, Gm, Dsus, Bb, A7, Dm
- Measures 25-28: Em7(b5), Gm, Asus, Gdim7, Gm, A, Gm, Gm6
- Measures 29-32: Em7(b5), Gm, Asus, Gdim7, A, Em7(b5), A



Yine Neşe-i Muhabbet

İsmâil Dede Efendi

Chord progression for the melody:

Chords: E, G#dim, Bm7(b5), E_{sus}, E, G#dim, Bm7(b5), E_{sus}

5 E A_m E₇ F D_m E

8 G#dim A D_m E₇ A_m E A

12 D_m E₇ A_m Bm7(b5) F D_m E

16 E₇ D_m6 Bm7(b5) F E Bm7(b5) A_m

20 E₇ A D_m A_{sus} F E₇ A_m

24 Bm7(b5) D_m E_{sus} D_{dim}7 D_m E D_m D_m6

28 Bm7(b5) D_m E_{sus} D_{dim}7 E Bm7(b5) E

32 **F** **C_{maj}** **E** **F** **C_{maj}** **E₇** **D_m**

36 **D[#]dim** **B_b** **E** **F** **C_{maj}** **E₇** **A**

40 **C** **E** **F** **C_{maj}** **E₇** **D_m** **D_{m6}**

44 **B_{m7(b5)}** **E_{7sus}** **F** **D_m** **E** **D_m** **D_{m6}**

48 **B_{m7(b5)}** **D_m** **E_{sus}** **D[#]dim7** **E** **C_{maj}**

51 **E** **B₇** **E** **A** **D_m** **A_{sus}**

55 **A** **B_{sus}** **A** **B_{sus}** **A** **D[#]dim** **E_{sus}** **A_m**

58 **A_m** **F[#]m7(b5)** **B₇** **C_{maj}** **E** **B** **§**

Bitiş

MybiSGen

Yine Neşe-i Muhabbet

İsmâil Dede Efendi

Chord progression for the song "Yine Neşe-i Muhabbet" by İsmâil Dede Efendi. The key signature is B-flat major (two flats) and the time signature is 4/4.

Chords: D, F#dim, Am7(b5), Dsus, F#dim, Am7(b5), Dsus, Gm, D7, Eb, Cm, D, F#dim, G, Cm, D7, Gm, D, G, Cm, D7, Gm, Am7(b5), Eb, Cm, D, D7, Cm6, Am7(b5), Eb, D, Am7(b5), Gm, D7, G, Cm, Gsus, Eb, D7, Gm, Am7(b5), Cm, Dsus, Cdim7, Cm, D, Cm, Cm6, Am7(b5), Cm, Dsus, Cdim7, D, Am7(b5), D.

32 E_b B_b maj D E_b B_b maj D_7 C_m

36 C^\sharp dim A_b D E_b B_b maj D_7 G

40 B_b D E_b B_b maj D_7 C_m C_m6

44 $A_m7(b5)$ D_7 sus E_b C_m D C_m C_m6

48 $A_m7(b5)$ C_m D sus C^\sharp dim 7 D B_b maj

51 D A_7 D G C_m G sus

55 G A sus G A sus G C^\sharp dim D sus G_m

58 G_m $E_m7(b5)$ A_7 B_b maj D A §

Bitiş

Yine Neşe-i Muhabbet

İsmâil Dede Efendi

♩ B $\text{D}^{\#}\text{dim}$ $\text{F}^{\#}\text{m7}(\text{b}5)$ B_{sus} B $\text{D}^{\#}\text{dim}$ $\text{F}^{\#}\text{m7}(\text{b}5)$ B_{sus}

5 B E_m B_7 C A_m B

9 $\text{D}^{\#}\text{dim}$ E A_m B_7 E_m B E

12 A_m B_7 E_m $\text{F}^{\#}\text{m7}(\text{b}5)$ C A_m B

16 B_7 A_m6 $\text{F}^{\#}\text{m7}(\text{b}5)$ C B $\text{F}^{\#}\text{m7}(\text{b}5)$ E_m

20 B_7 E A_m E_{sus} C B_7 E_m

24 $\text{F}^{\#}\text{m7}(\text{b}5)$ A_m B_{sus} $\text{A}_{\text{dim}7}$ A_m B A_m A_m6

28 $\text{F}^{\#}\text{m7}(\text{b}5)$ A_m B_{sus} $\text{A}_{\text{dim}7}$ B $\text{F}^{\#}\text{m7}(\text{b}5)$ B

32 C G_{maj} B C G_{maj} B_7 A_m

36 $\text{A}^{\#}\text{dim}$ F B C G_{maj} B_7 E

40 G B C G_{maj} B_7 A_m A_{m6}

44 $\text{F}^{\#}\text{m}7(\text{b}5)$ B_7^{sus} C A_m B A_m A_{m6}

48 $\text{F}^{\#}\text{m}7(\text{b}5)$ A_m B_{sus} $\text{A}^{\#}\text{dim}7$ B G_{maj} *Bittiş*

51 B $\text{F}^{\#}7$ B E A_m E_{sus}

55 E $\text{F}^{\#}\text{sus}$ E $\text{F}^{\#}\text{sus}$ E $\text{A}^{\#}\text{dim}$ B_{sus} E_m

58 E_m $\text{C}^{\#}\text{m}7(\text{b}5)$ $\text{F}^{\#}7$ G_{maj} B $\text{F}^{\#}$ $\text{F}^{\#}$ $\text{F}^{\#}$

Yine Neşe-i Muhabbet

İsmâil Dede Efendi

Chord progression for the song "Yine Neşe-i Muhabbet" by İsmâil Dede Efendi. The music is written in 6/4 time and E-flat major (three flats).

Chords and measures shown:

- Measures 1-4: C, E^{dim}, G^{m7(b5)}, C^{sus}, C, E^{dim}, G^{m7(b5)}, C^{sus}
- Measure 5: C, F^m, C⁷, D^b, B^bm, C
- Measures 9-11: E^{dim}, F, B^bm, C⁷, F^m, C, F
- Measures 12-15: B^bm, C⁷, F^m, G^{m7(b5)}, D^b, B^bm, C
- Measures 16-19: C⁷, B^bm6, G^{m7(b5)}, D^b, C, G^{m7(b5)}, F^m
- Measures 20-23: C⁷, F, B^bm, F^{sus}, D^b, C⁷, F^m
- Measures 24-27: G^{m7(b5)}, B^bm, C^{sus}, B^bdim7, B^bm, C, B^bm, B^bm6
- Measures 28-31: G^{m7(b5)}, B^bm, C^{sus}, B^bdim7, C, G^{m7(b5)}, C

32 D_b A_b^{maj} C D_b A_b^{maj} C_7 B_b^{m}

36 B^{dim} G_b C D_b A_b^{maj} C_7 F

40 A_b C D_b A_b^{maj} C_7 B_b^{m} B_b^{m6}

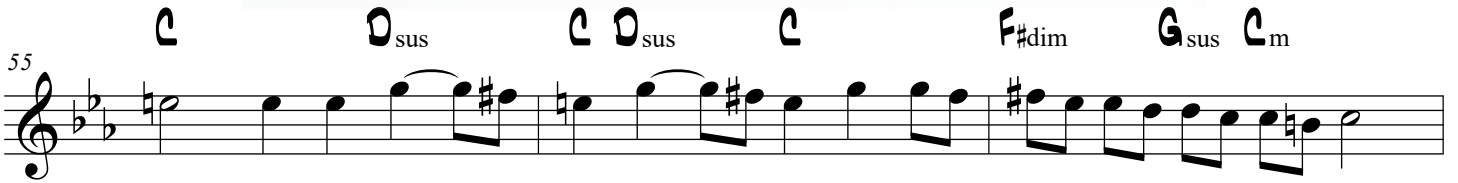
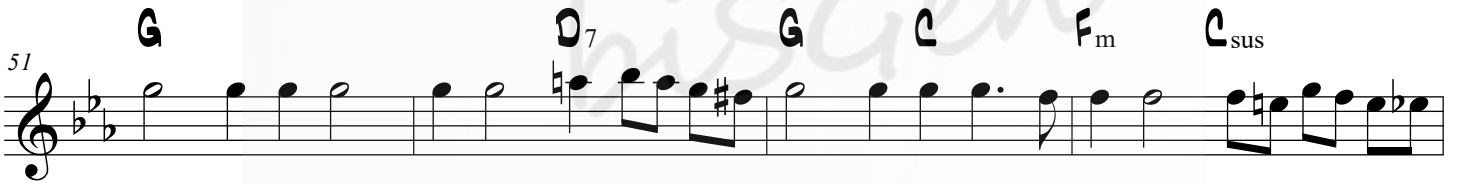
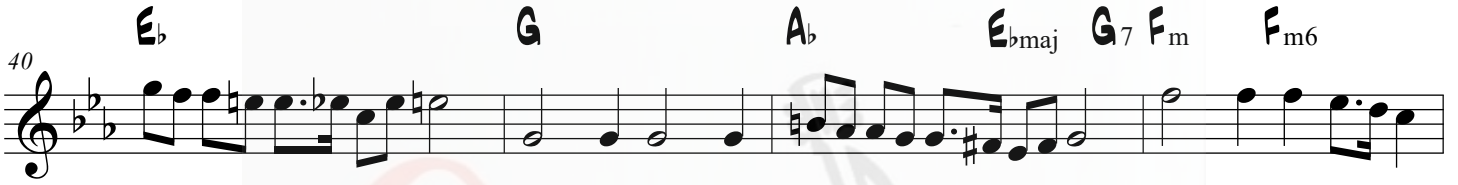
44 $G_{m7(b5)}$ C_{7sus} D_b B_b^{m} C B_b^{m} B_b^{m6}

48 $G_{m7(b5)}$ B_b^{m} C_{sus} B_b^{dim7} C A_b^{maj}

51 C G_7 C F B_b^{m} F_{sus}

55 F G_{sus} F G_{sus} F B^{dim} C_{sus} F_m

58 F_m $D_{m7(b5)}$ G_7 A_b^{maj} C G Bis



Yine Neşe-i Muhabbet

İsmâil Dede Efendi

Chord progression for the song "Yine Neşe-i Muhabbet" by İsmâil Dede Efendi. The key signature is one sharp (F#) and the time signature is 6/4.

Chords: F#, A#dim, C#m7(b5), F#sus, F#, A#dim, C#m7(b5), F#sus, F#, Bm, F#7, G, Em, F#, A#dim, B, Em, F#7, Bm, F# B, Em, F#7, Bm, C#m7(b5), G, Em, F#, F#7, Em6, C#m7(b5), G, F#, C#m7(b5), Bm, F#7, B, Em, Bsus, G, F#7, Bm, C#m7(b5), Em, F#sus, Edim7, Em, F#, Em, Em6, C#m7(b5), Em, F#sus, Edim7, F#, C#m7(b5), F#.

32 **G** **D_{maj}** **F_#** **G** **D_{maj}** **F_{#7}** **E_m**

36 **F_{dim}** **C** **F_#** **G** **D_{maj}** **F_{#7}** **B**

40 **D** **F_#** **G** **D_{maj}** **F_{#7}** **E_m** **E_{m6}**

44 **C_{#m7(b5)}** **F_{#7sus}** **G** **E_m** **F_#** **E_m** **E_{m6}**

48 **C_{#m7(b5)}** **E_m** **F_{#sus}** **E_{dim7}** **F_#** **D_{maj}**

51 **F_#** **C_{#7}** **F_#** **B** **E_m** **B_{sus}**

55 **B** **C_{#sus}** **B** **C_{#sus}** **B** **F_{dim}** **F_{#sus}** **B_m**

58 **B_m** **G_{#m7(b5)}** **C_{#7}** **D_{maj}** **F_#** **C_#** **§**

Bitiş

MybiSGen

Yine Neşe-i Muhabbet

İsmâil Dede Efendi

Chord progression for the melody:

Chords: C# F dim G#m7(b5) C#sus C# F dim G#m7(b5) C#sus

5

Chords: C# F#m C#7 D Bm C#

9

Chords: F dim F# Bm C#7 F#m C# F#

12

Chords: Bm C#7 F#m G#m7(b5) D Bm C#

16

Chords: C#7 Bm6 G#m7(b5) D C# G#m7(b5) F#m

20

Chords: C#7 F# Bm F#sus D C#7 F#m

24

Chords: G#m7(b5) Bm C#sus Bdim7 Bm C# Bm Bm6

28

Chords: G#m7(b5) Bm C#sus Bdim7 C# G#m7(b5) C#

32 D A_{maj} C_# D A_{maj} C_{#7} B_m

36 C_{dim} G C_# D A_{maj} C_{#7} F_#

40 A C_# D A_{maj} C_{#7} B_m B_{m6}

44 G_{#m7(b5)} C_{#7sus} D B_m C_# B_m B_{m6}

48 G_{#m7(b5)} B_m C_{#sus} B_{dim7} C_# A_{maj}

51 C_# G_{#7} C_# F_# B_m F_{#sus}

55 F_# G_{#sus} F_# G_{#sus} F_# C_{dim} C_{#sus} F_{#m}

58 F_{#m} D_{#m7(b5)} G_{#7} A_{maj} C_# G_# %

Bitiş