

# Kürdilihicazkâr Longa

Haydar Tatlıyay

Eserin Trafiği : A + B + C + B+ D + B + E + B

Orjinal Notasyonundan Farklıdır !

12/8

A

E<sub>m</sub> B<sub>m</sub>

3

A E<sub>m</sub> G F<sub>#m</sub> G F<sub>#m</sub>

1. 2.

6

B Teslim F<sub>#m</sub> G

8

B<sub>m</sub> E<sub>m</sub>7 G F<sub>#m</sub> A G F<sub>#m</sub>

1. 2.

11

C E<sub>m</sub> B<sub>m</sub> A G

13

C<sub>#m</sub>7(b5) E<sub>m</sub> F<sub>#m</sub> E<sub>m</sub> E<sub>m</sub>/G F<sub>#m</sub>

1. 2.

16

**D** **A** **E<sub>m</sub>** **A** **B<sub>m</sub>** **C<sub>#m</sub>7(b5)** **G**

20

**F<sub>#m</sub>** **E<sub>m</sub>** **D** **B<sub>m</sub>** **E<sub>m</sub>** **G** **F<sub>#m</sub>** **E<sub>m</sub>** **F<sub>#m</sub>**

1. 2.

24

**E** **F<sub>#m</sub>** **F<sub>#m</sub>/A** **G** **E<sub>m</sub>**

26

**B<sub>m</sub>** **F<sub>#m</sub>** **E<sub>m</sub>** **B<sub>m</sub>** **A** **G** **F<sub>#m</sub>**

1. 2.

# Kürdilihicazkâr Longa

Haydar Tatlıyay

Eserin Trafiği : A + B + C + B+ D + B + E + B

Orjinal Notasyonundan Farklıdır !

3

A

A<sub>m</sub> E<sub>m</sub>

3

D A<sub>m</sub> C B<sub>m</sub> C B<sub>m</sub>

6

B

Teslim

B<sub>m</sub> C

8

E<sub>m</sub> A<sub>m</sub>7 C B<sub>m</sub> D C B<sub>m</sub>

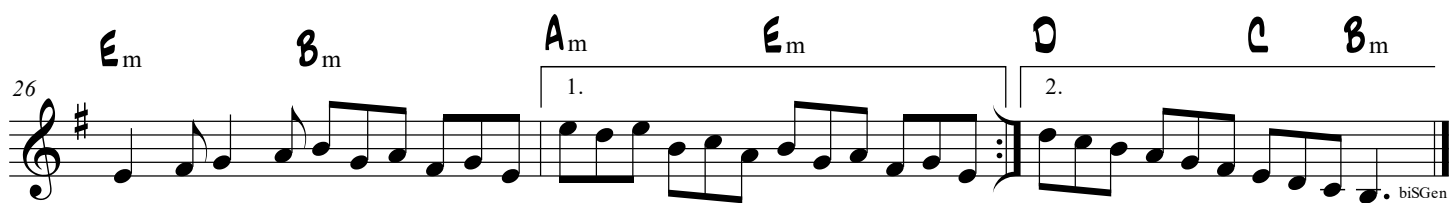
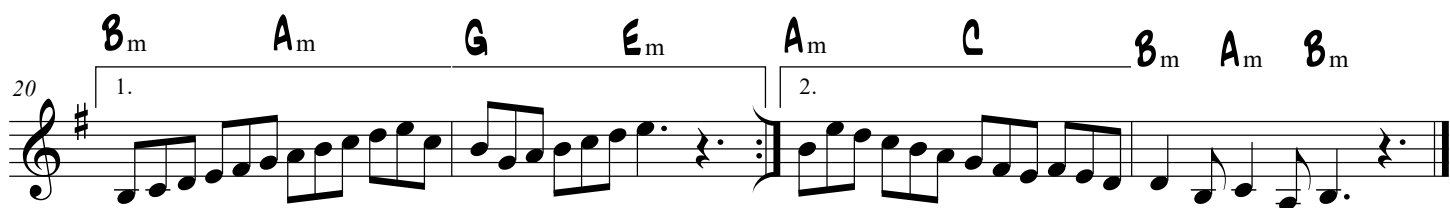
11

C

A<sub>m</sub> E<sub>m</sub> D C

13

F<sub>#m7(b5)</sub> A<sub>m</sub> B<sub>m</sub> A<sub>m</sub> A<sub>m</sub>/C B<sub>m</sub>



# Kürdilihicazkâr Longa

Haydar Tatlıyay

Eserin Trafiği : A + B + C + B+ D + B + E + B

Orjinal Notasyonundan Farklıdır !

12/8

A

D<sub>m</sub> A<sub>m</sub>

3

G D<sub>m</sub> F E<sub>m</sub> F E<sub>m</sub>

1. 2.

6

B Teslim E<sub>m</sub> F

8

A<sub>m</sub> D<sub>m</sub>7 F E<sub>m</sub> G F E<sub>m</sub>

1. 2.

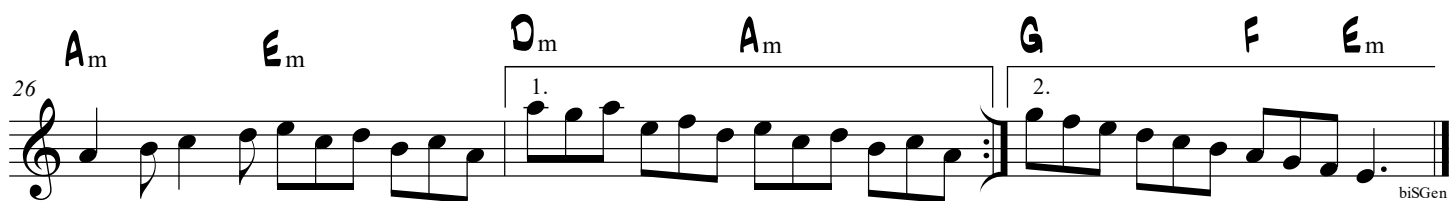
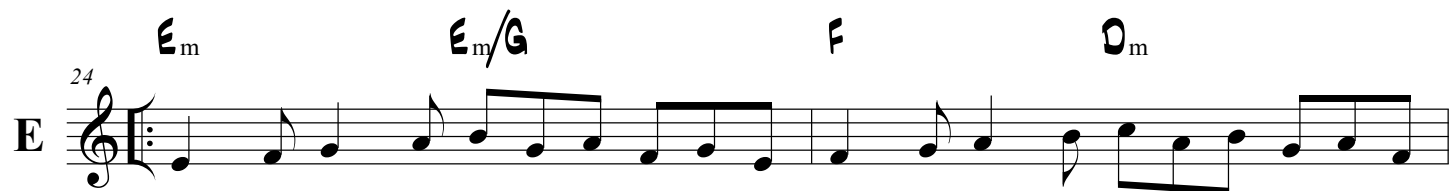
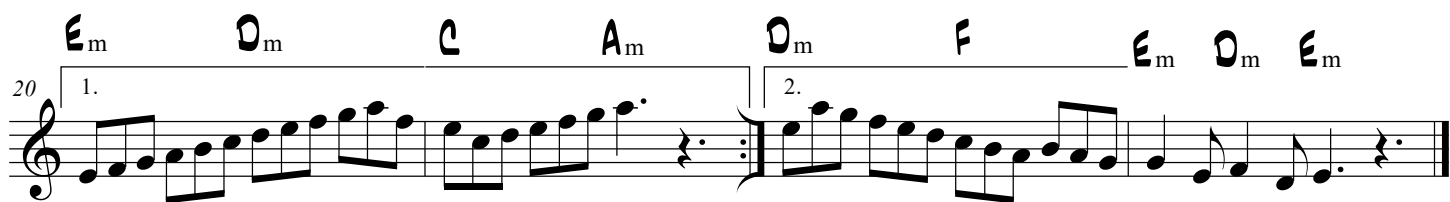
11

C D<sub>m</sub> A<sub>m</sub> G F

13

B<sub>m</sub>7(b5) D<sub>m</sub> E<sub>m</sub> D<sub>m</sub> D<sub>m</sub>/F E<sub>m</sub>

1. 2.



# Kürdilihicazkâr Longa

Haydar Tatlıyay

Eserin Trafiği : A + B + C + B+ D + B + E + B

Orjinal Notasyonundan Farklıdır !

3/8

A

G<sub>m</sub> D<sub>m</sub>

3

C G<sub>m</sub> B<sub>b</sub> A<sub>m</sub> B<sub>b</sub> A<sub>m</sub>

1. 2.

6

B Teslim

A<sub>m</sub> B<sub>b</sub>

8

D<sub>m</sub> G<sub>m</sub>7 B<sub>b</sub> A<sub>m</sub> C B<sub>b</sub> A<sub>m</sub>

11

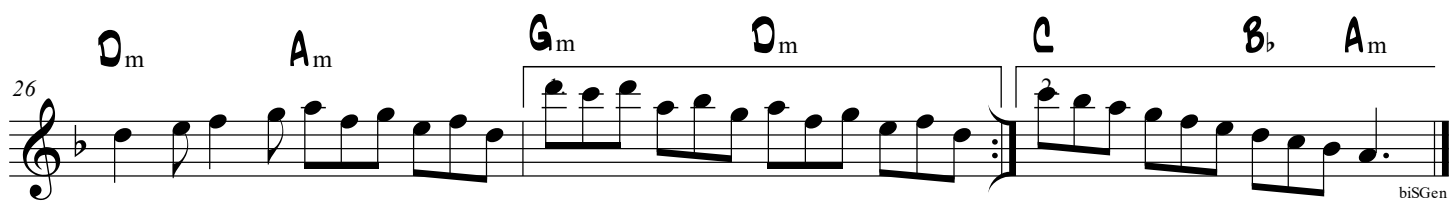
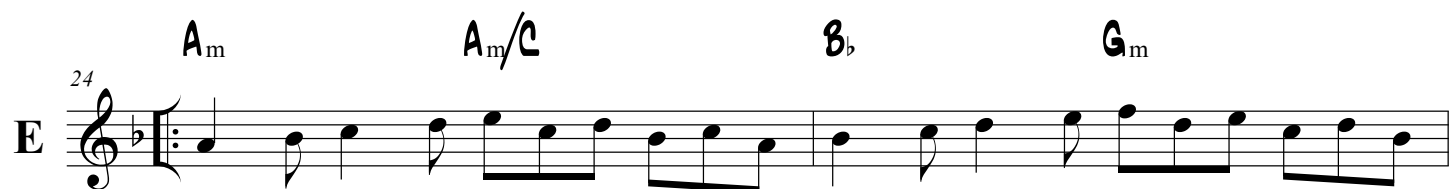
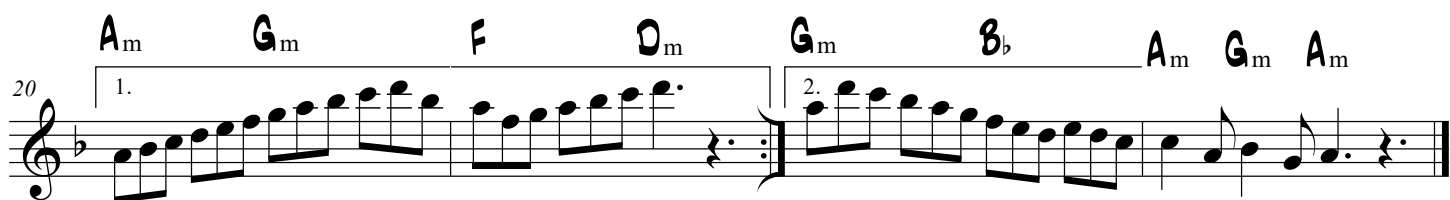
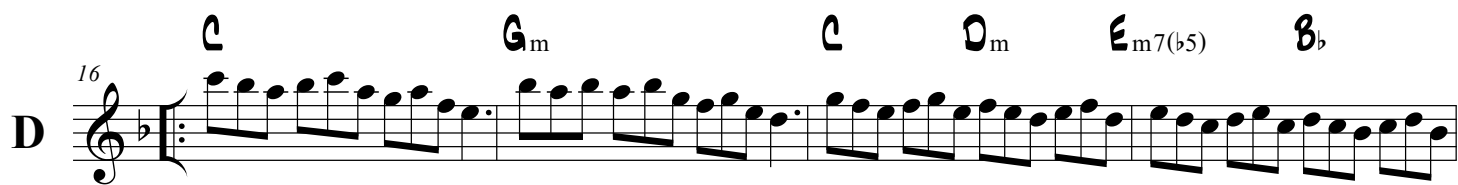
C

G<sub>m</sub> D<sub>m</sub> C B<sub>b</sub>

13

E<sub>m</sub>7(b5) G<sub>m</sub> A<sub>m</sub> G<sub>m</sub> G<sub>m</sub>/B<sub>b</sub> A<sub>m</sub>

1. 2.





# Kürdilihicazkâr Longa

Haydar Tatlıyay

Eserin Trafiği : A + B + C + B+ D + B + E + B

Orjinal Notasyonundan Farklıdır !

3

A

F<sub>m</sub> C<sub>m</sub>

3

B<sub>b</sub> F<sub>m</sub> A<sub>b</sub> G<sub>m</sub> A<sub>b</sub> G<sub>m</sub>

6

B

Teslim

G<sub>m</sub> A<sub>b</sub>

8

C<sub>m</sub> F<sub>m</sub>7 A<sub>b</sub> G<sub>m</sub> B<sub>b</sub> A<sub>b</sub> G<sub>m</sub>

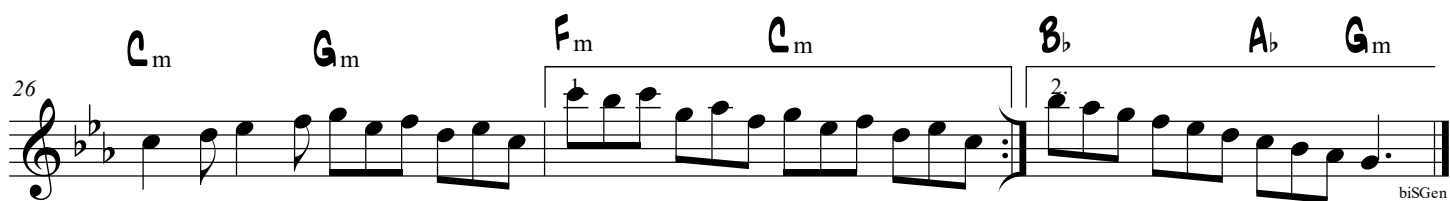
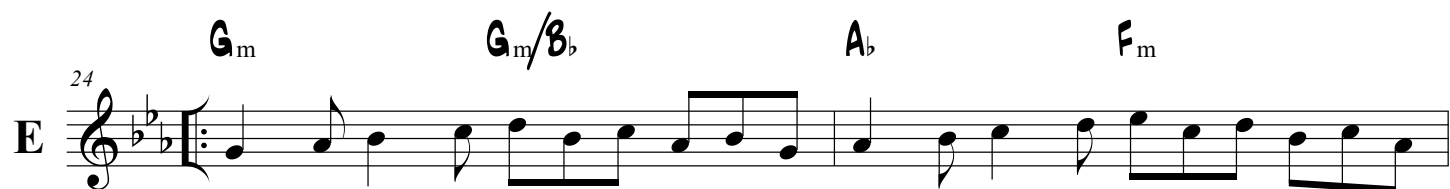
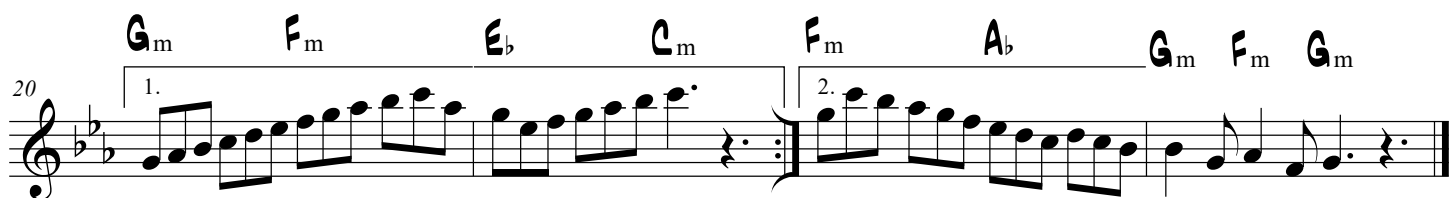
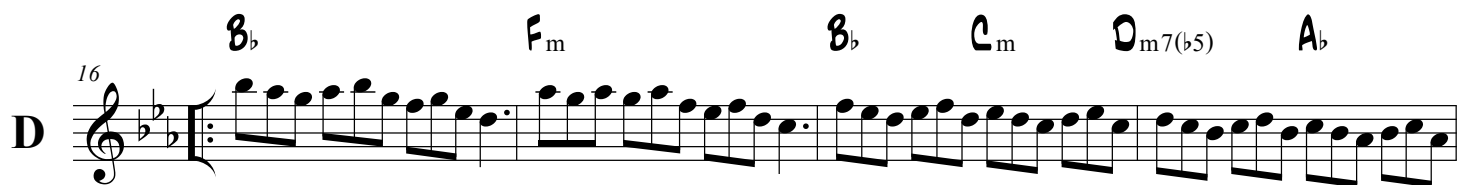
11

C

F<sub>m</sub> C<sub>m</sub> B<sub>b</sub> A<sub>b</sub>

13

D<sub>m</sub>7(b5) F<sub>m</sub> G<sub>m</sub> F<sub>m</sub> F<sub>m</sub>/A<sub>b</sub> G<sub>m</sub>





16

**D**

F C<sub>m</sub> F G<sub>m</sub> A<sub>m</sub>7(b5) E<sub>b</sub>

20

1. 2.

D<sub>m</sub> C<sub>m</sub> B<sub>b</sub> G<sub>m</sub> C<sub>m</sub> E<sub>b</sub> D<sub>m</sub> C<sub>m</sub> D<sub>m</sub>

24

**E**

D<sub>m</sub> D<sub>m</sub>/F E<sub>b</sub> C<sub>m</sub>

26

G<sub>m</sub> D<sub>m</sub> C<sub>m</sub> G<sub>m</sub> F E<sub>b</sub> D<sub>m</sub>

1. 2.

# Kürdilihicazkâr Longa

Haydar Tatlıyay

Eserin Trafiği : A + B + C + B+ D + B + E + B

Orjinal Notasyonundan Farklıdır !

8<sub>m</sub> F<sub>#m</sub>

A

3

E 8<sub>m</sub> D C<sub>#m</sub> D C<sub>#m</sub>

1. 2.

6

B Teslim C<sub>#m</sub> D

8

F<sub>#m</sub> 8<sub>m7</sub> D C<sub>#m</sub> E D C<sub>#m</sub>

1. 2.

11

C 8<sub>m</sub> F<sub>#m</sub> E D

13

G<sub>#m7(b5)</sub> 8<sub>m</sub> C<sub>#m</sub> 8<sub>m</sub> 8<sub>m</sub>/D C<sub>#m</sub>

1. 2.

16

**D**

E B<sub>m</sub> E F<sub>#m</sub> G<sub>#m</sub>7(b5) D

20

C<sub>#m</sub> B<sub>m</sub> A F<sub>#m</sub> B<sub>m</sub> D C<sub>#m</sub> B<sub>m</sub> C<sub>#m</sub>

1. 2.

24

**E**

C<sub>#m</sub> C<sub>#m</sub>/E D B<sub>m</sub>

26

F<sub>#m</sub> C<sub>#m</sub> B<sub>m</sub> F<sub>#m</sub> E D C<sub>#m</sub>

1. 2.