

Handwritten musical score for a piece titled "Taslim". The score is written on 11 staves in a treble clef with a key signature of one flat (B-flat) and a 2/4 time signature. The first staff is marked with the number "28". The piece includes a section labeled "Taslim." and a section labeled "2. Hane." with a "Karar" (Coda) symbol. The notation includes various musical symbols such as notes, rests, and accidentals.

3. Hane.



4. Hane.




*Biş ne vîde z nâ le i ban ki re bâb hey . . .*


*yâ rî yâr . . nûk te hâ yi aş ki der her gû ne bâb . .*


*hey yi hey hey yâr . . . pi . . ri men âh .*


*bâ fe ga nû nev hâ gû yend da i ma . . . hey . . .*


*yâ rî yâr . . ey hu da vü ey hu da vü ey hu da . .*


*hey yi hey hey yâr . . . pi . . ri men âh*


*Tâhtı fevk ez aş ki â med der vü cud . . . hey . . .*


*yâ rî yâr . . hen zemi ni tî re hem çer hı ke bud . . .*


*hey yi hey hey yâr . . . pi . . . ri men âh*


*Ez me habbet za tî hes ti der ci han . . . hey . . .*


*yâ rî yâr . . behri tîk met ta şe ved hâ lik â yan . . .*


*hey yi hey hey yâr . . . pi . . . ri men âh*

mañ . . bu bi men . . mer . . gu bi men . .

mat . . . lu bi me . ni mak . bu bi men . . .

mer . . . gu bi me ni mat . . lu bi men

hey yi hey hey yâr . . . pi . . . ri men . ah

der ta ri kat evvel an ba sed ki dil hey . . . .

yâr ah . der de rû ni ten se ved'sa fi zi kil . . .

hey yi hey hey yâr . . . . pi . . ri men ah

aş ki mer . dan . . . ber ter ez . aş . . . .

ki hu dest . . . . pi . . ri men . . .

zan ki der . . mer . . . dan hu de . ra . . . .

sir ri hast . . . . pi . . ri men . ah .

hes ti hak ma' . . . . bu dü cüm . . le cüm le

der ci han ah . . . pi . . ri men . .

nis ti kes . . . ez . . . ben de ki . . i . . .

o ci han . . . . . pi . . ri men . ah .

hey yi hey yā ri yā ri men . . . . hey yi hey

yā ri yā ri men . . . ah pi . . . . rim .

ah des ti gi rim yā ri yā ri men . .

yār . . . . yū re ğim . del . . . ci ğer im

yār . . . . yār . . . . gör ki ne ler var . .

ah . . mak bu li men vay . . . . ah . . .

ah . . . . hey yi hey mak bu li men . . . vay

# İkinci Selâm.

*Eyfer.*

Ah Ah ... sul ta ni meni  
der men bi de mi

ni sul ta ni meni  
mi men zin de se vem

ni en der di lü can  
vem yek can ci se ved

can î ma nî me ni  
ved sad ca ni me ni

Ah î ma nî me ni  
*Terennüm.*

Musical notation for the Terennüm section, consisting of ten staves of music.

Devrikebir

# Üçüncü Selâm.

28

Hem cü a dem her ve

li nû ri hu dast

beli yâ ri men

ta ne pin de ri ki hak

er vey cü dast beli

ya ri men zan me lâ ik

sec de a ren deş zi can

beli yâ ri men

Kân der o di den di

nû ri bi gi ran

be li yâ ri me hak ha li

feş ker di der ar zu

se mā . . . . . beli yā ri . men . .

Tā ki . ker . . ded . . sū yi . . men .

zil . . . reh . nū . . mā . . . . .

Terennüm.

10 (4)  
Hey yi hey yā rim

Ey ki hezār a fe rin bu ni ce sul tan o lur  
Her ki bu gün ve le de i na nu ben yüsüre

ah ku li o lan ki sı ler ah . . . ah . . .  
ah yoksuli se bay o lur ah ah

husre vü ha kan o lur yār . . . husre vü ha kan o lur  
bay i se sul tan o lur yār bay i se sul tan " "

Terennüm.



The first staff of music is written on a single five-line staff with a treble clef. The key signature has one sharp (F#), indicating the key of D major. The melody consists of a series of eighth and sixteenth notes, starting on D4 and ending on a whole note D4. The word "Ben" is written in a cursive script below the final notes of the staff.

*bilmezi dim giz li a yan he . . . . . hepseni miş*

sin ten ler de vü' can lar da ni han ah . . . ah . . .

hep seni miş, sen . . . yâr . . . yâr . . . hep seni miş.

sin sen den bu ci han iç re ni san'ı . . . . . ister i dim

ben sen den bu ci han ic re ni san i . . . . .

is ter i dim ben ā tur bunu bil dim ki ci han

ah . . . ah . . . hepseni miş sin . . .


  
 yâr . yâr . . . . . hep sen i miş sin ol

duk y! ne biz secde be ri nā . . . . . nā ri me hab

bet ol maz di'li miz beste i ef kâ . . . . .

  
kā ri me hāb bet cā nū dī lī mi ey ler i dīm qa . .

gamze ne tes lim . . . cā nū di li mi

ey ler i dim ga . . . . . gamze ne tes lim mahru mi i gam

ol sa di li za . . . . . za ri me hab bet ah . . .

.. Ey maksadı ā. sı kın o lan Mevlā . nā . . . . . yār .  
Bi cā re le riz hal i mi ze rahmey le

yār . . . . . yā ri yā ri men üey neş e i müt mi nin o lan  
" " " " " bi cā re le re mu in o lan

Mev lā . nā . . . . . yār . . . . . yā ri yā ri

men Bi men dost . . . . . dost . . . . . yā ri yā ri men

Evfer. Dördüncü Selām.  
Ah Ah sul ta ni . . . . . me ni . . . . .  
der men bi de mi

ni mi . . . . . sul ta ni . . . . . me ni . . . . .  
men zin de şe vem

ni vem . . . . . en yek der di . . . . . lü can . . . . .  
şek can

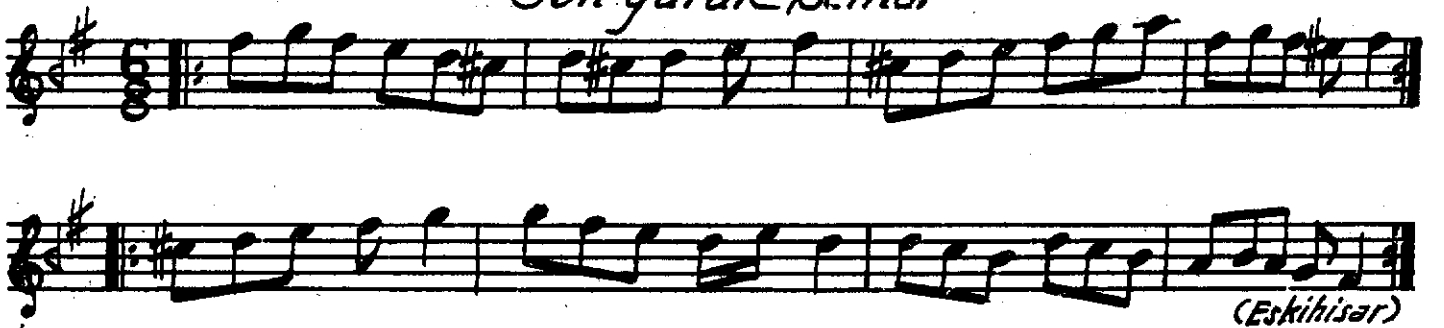
Can ved . . . . . sad ma ni . . . . . me ni . . . . .  
ca ni me ni

ah . . . . . i ma ni . . . . . meni . . . . .

*Son Peşrev.*



*Son Yürük Semaî*



(Eskihisar)