

ACEM MAKAMINDA ÇENGİ FASLI

DÜYEK
BAŞNAĞME

Mürettibi : İSMÂİL HAKKI



ARANAĞME
EVFER



BİR A ŞI KIN OL SA BA RI



BİR A ŞI KIN OL SA BA Rİ TERK İ DE MEZ



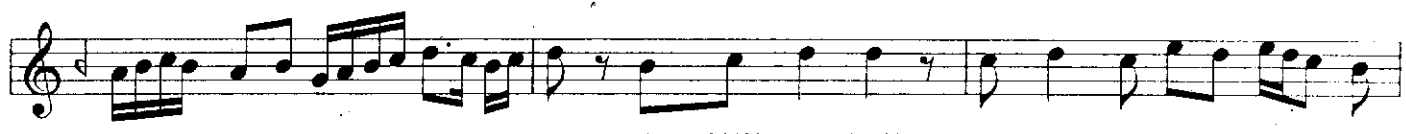
A HÜ ZA Rİ A CA NİM



PER VA NE VEŞ O DA YA NAR



BE NİM Gİ Bİ VAR HE ZA Rİ



A MAN A MAN A MAN CA NİM



A MAN A MAN A MAN ÖM RÜM SA NA BEN GÖY



NÜ MÜ VER DİM A MAN A MAN A MAN



KAÇ MA BEN DEN ÖM RÜM VA Rİ



BUYER DE YİL A MAN SE KİZ DE YİL



YÜZ DE YIL

ARANAGMESİ

BU YER DE YIL A MAN SE KIZ DE YIL



YÜZ DE YIL



SET RE Sİ NİN A MAN DÜYME LE Rİ



DÜZ DE YIL AH

SET RE Sİ NİN A MAN DÜYME LE Rİ



DÜZ DE YIL



BOŞANDA DAĞLAR BO ŞAN AMAN A MANÇEV RE Sİ BO ŞAN

ARANAGMESİ



AMAN AMAN ÇEV RE Sİ BO ŞAN

İF LAHİ



OL MAZ OL MAZ OLMAZ

DERDİ NE DÜ ŞEN

AMAN AMAN İF LAHİ



OL MAZ OL MAZ OL MAZ

DERDİ NE DÜ ŞEN

ARANAGMESİ



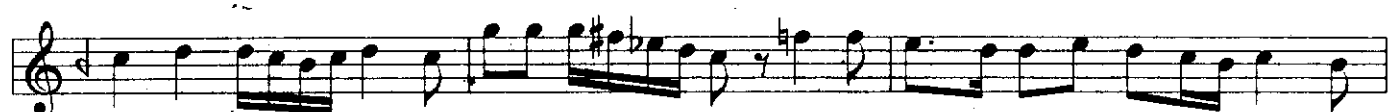
ANAMDAN



BA BAM DAN AMAN AMAN BA NA BİR Nİ ŞAN A MAN A MAN BA NA



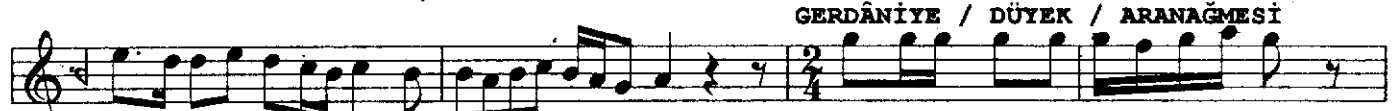
BİR Nİ ŞAN ÖL ME



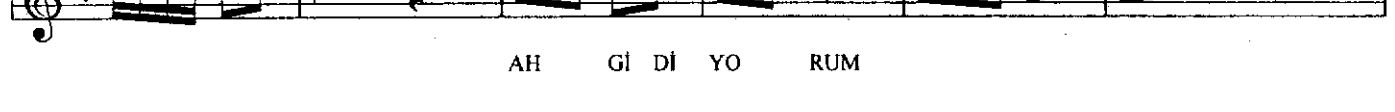
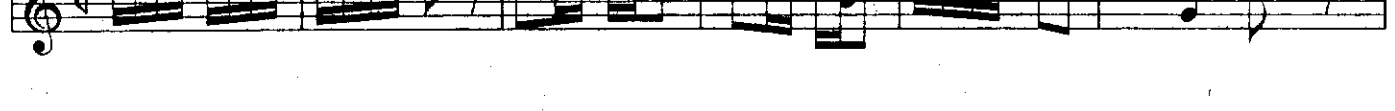
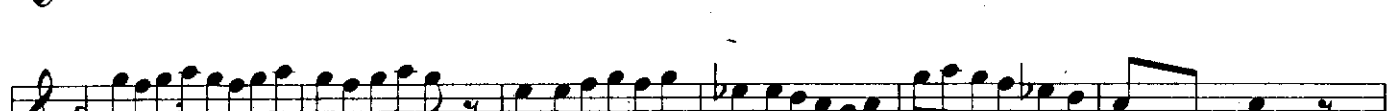
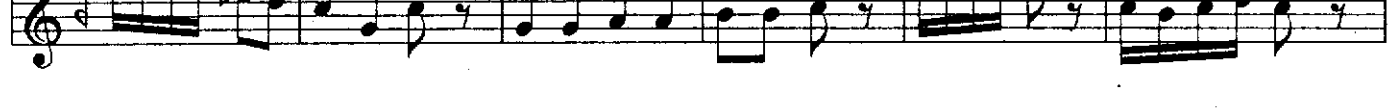
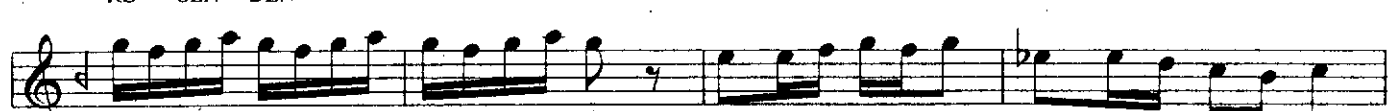
DEN AY RIL MAM AY RIL MAM BİR TA NEM SEN DEN



A MAN A MAN Şİ KA YE TIM OL SUN OL SUN BEY LE



RE SEN DEN



AH Gİ Dİ YO RUM



ARANAĞMESİ

YA

RİN

YAR



TAŞ LAR ÖL DÜ



GÜN



YAR



AH SEN CA HİL SİN



NI

ARANAĞMESİ



DE YİM YAR



ARANAĞMESİ



OR TA LAR DA SÜ RÜN

ARANAĞMESİ



YAR

[illegible]

ARANAĞMESİ

ARANAGMESİ



GEL ME SİN DÜŞ MAN BA ŞI NA

AY NA YI AL MIS DI ZI NI

KAH GÜ LÜN DÖK MÜŞ YÜ ZÜ NE AY NA YI AL MIŞ Dİ Zİ NE

KAH GÜ LÜN DÖK MÜŞ YÜ ZÜ NE SÜR ME LER ÇEK MİŞ GÖ ZÜ NE

YAK DI BE Nİ AH O GÜ ZEL SÜR ME LER ÇEK MIŞ GÖ ZÜ NE

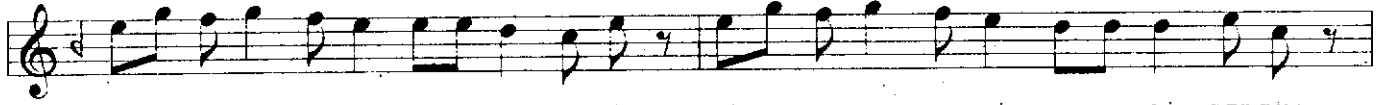
ARANAĞMESİ

ARANAGMES I

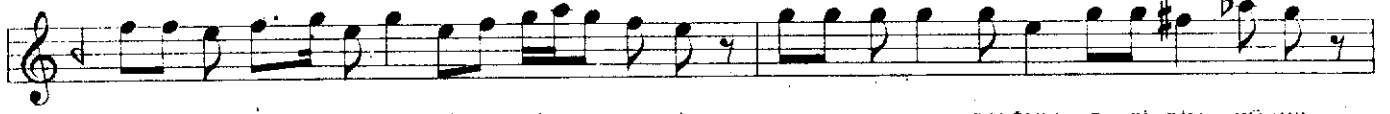
YAK DI BE NI AH O GÜ ZEL

ÇARGÂHTA / NIŞÂBUREK / RAKSAN

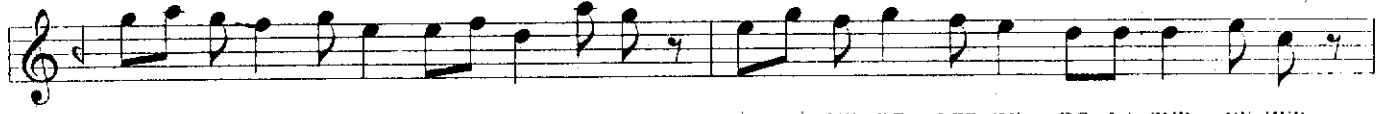
BİR GÜ ZE LE BAKUB GÖYNÜ MÜ VERDİM BİR GÜ ZE LE BA KUB GÖY NÜ MÜ VERDİM



Gİ NE TA ZE LEN Dİ O ES Kİ DER DİM Gİ NE TA ZE LEN Dİ O ES Kİ DER DİM



GEL SİN YAT SİN Dİ YE Sİ NE Mİ VER DİM YA NUP TU TUŞ DUGUM O Şİ RİN GÜ ZEL

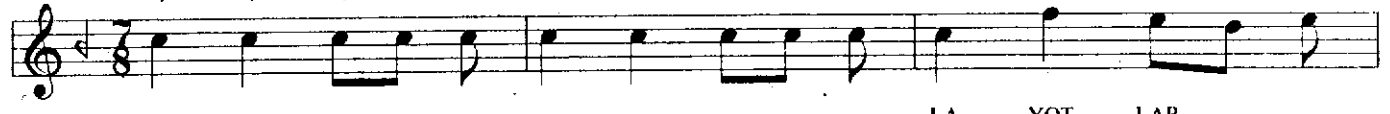


ŞİM Dİ NE RE LER DE DO LA ŞUB GE ZER ŞİM Dİ NE RE LER DE DO LA ŞUB GE ZER

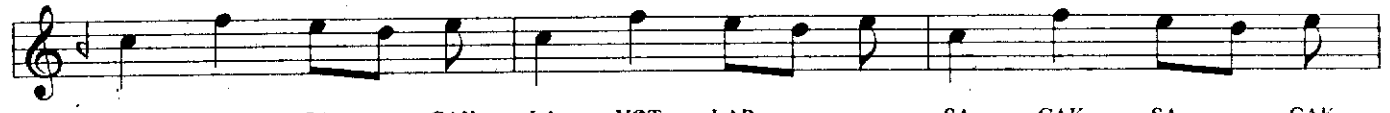
ARANAĞMESİ



DEVİRİ HİNDİ



LA YOT LAR



SA ÇAK SA ÇAK LA YOT LAR SA ÇAK SA ÇAK



AL ÇAK BOY LU SUN AL ÇAK AL ÇAK BOY



LU SUN AL ÇAK SE Nİ KÜ ÇÜK DE Dİ LER

SE Nİ KÜ ÇÜK DE Dİ LER SEN OY NAR

MI SIN BI ÇAK SEN OY NAR MI SIN BI ÇAK

NİN NİN Nİ Nİ Nİ NİN NİN Nİ Nİ Nİ Ö LE YİM

YAR YO LU NA KİM LER GİR SIN KO LU MA

KİM LER GİR SIN KO LU NA SON ARANAGMEİ

tr

MAHUR MAKAMINDAN ZEYBEK

AKSAK



Z E Y B E K

AKSAK

TANBURI CEMİL BEY



This image displays a page of musical notation, likely for a piano or guitar, consisting of ten staves. The notation is written in a single system across these staves. The music features a variety of musical symbols and techniques:

- Staff 1:** Begins with two accents (>) over eighth notes. It includes several triplet markings (3) over groups of notes.
- Staff 2:** Continues the melodic line with more triplet markings.
- Staff 3:** Features a series of eighth notes with accents.
- Staff 4:** Shows a sequence of eighth notes with flats and naturals.
- Staff 5:** Includes trill markings (*tr*) over specific notes.
- Staff 6:** Contains a dense sequence of eighth notes.
- Staff 7:** Features a triplet marking over a group of notes.
- Staff 8:** Continues the melodic development with various accidentals.
- Staff 9:** Includes another triplet marking.
- Staff 10:** Ends the piece with a final melodic phrase.

MUĞLA ZEYBEK GÜNDÜZ BEYİ

AKSAK

