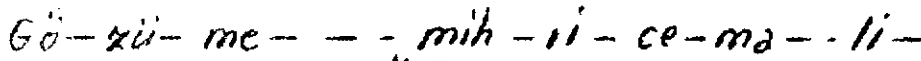


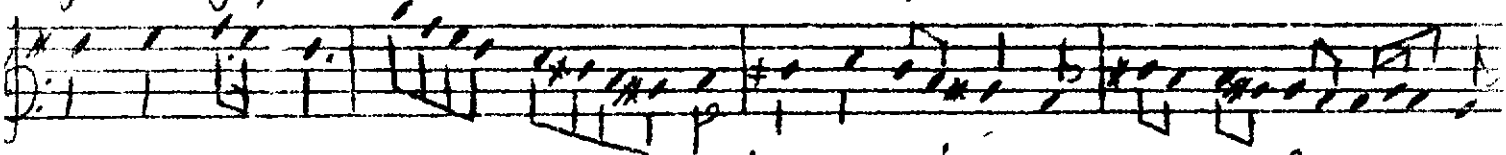
Brite
Garbis efened

(Handwritten notes at the bottom of the page)

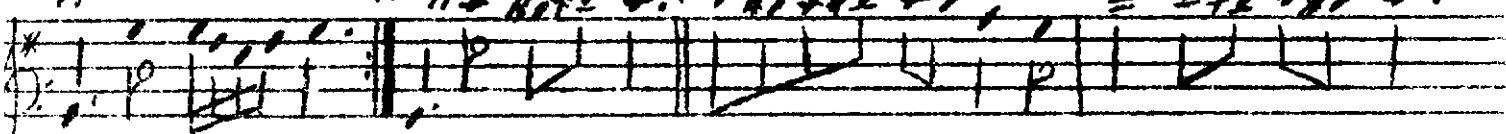


Handwritten musical notation for the first system of 'The Rose Tree'. The notation is on a single staff with a treble clef and a key signature of one sharp (F#). The melody consists of several measures, with some notes marked with a '+' sign. The piece ends with a double bar line and a repeat sign.

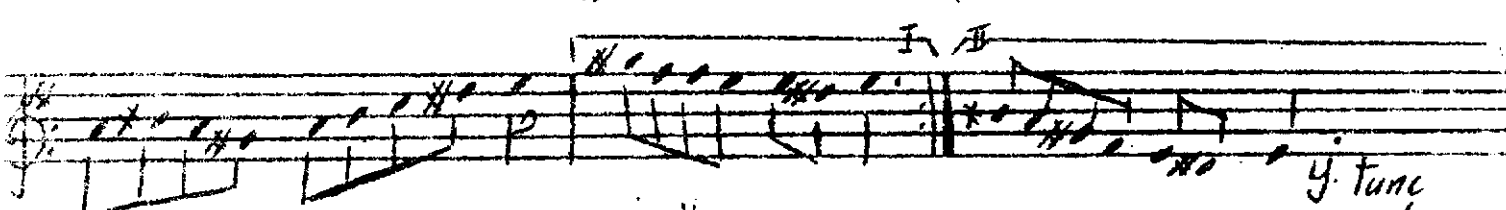
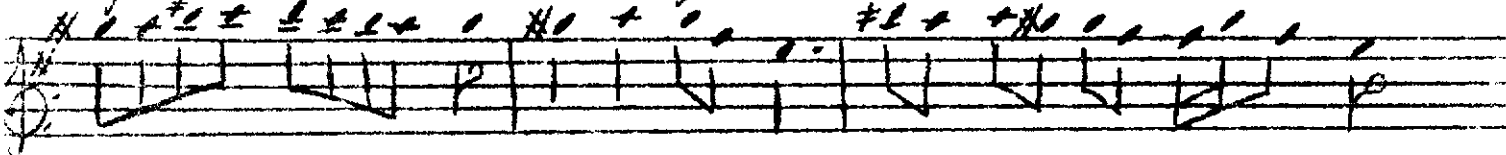
- gi-bi-geç - - di - - - - se-be-ri - - - xev-ki-vi-sa - -



I II/I + H₂O + . mih- - ri - - - mu saf- - la - - -
+ H₂ + H₂ + , = I + H₂ + .



cy- - - - - le di git - - - ti be ni - a - - - -



Bir lahza göründü gözümde mihr-i cemali
Rüya gibi geçti şehri zevk-i visali
Minatı musaffa eyledi gitti beni âli
Rüya gibi geçti şehri zevk-i visali

Y. Tunc

[Handwritten signature]