

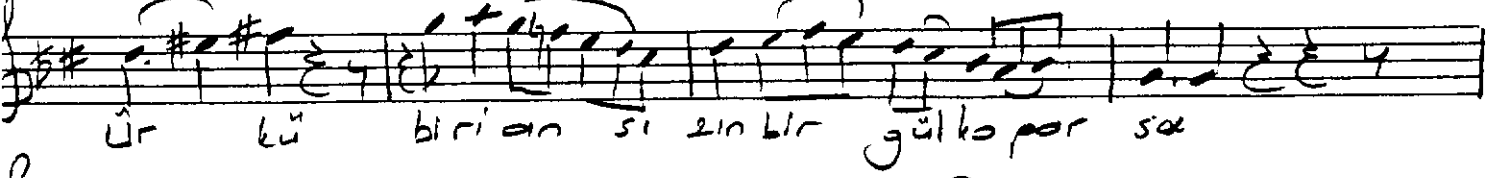
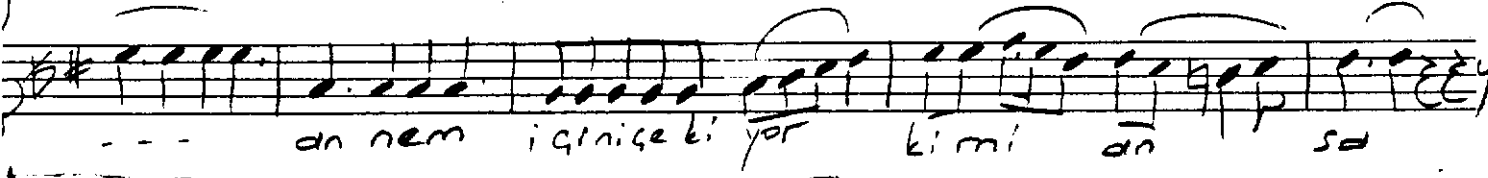
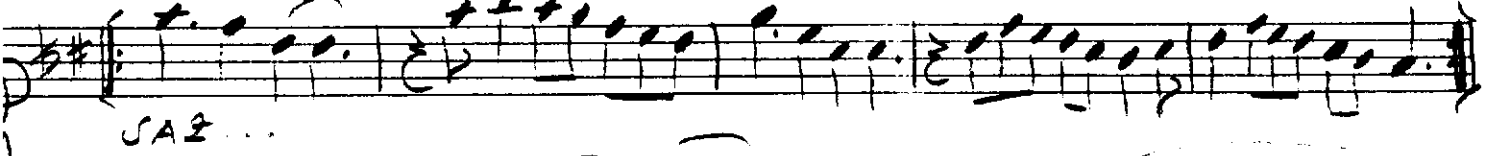
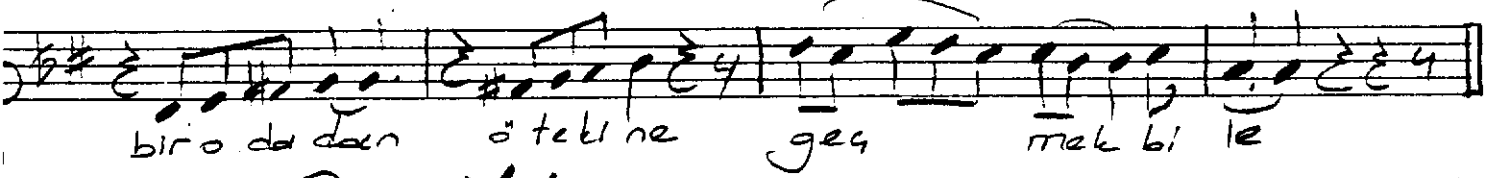
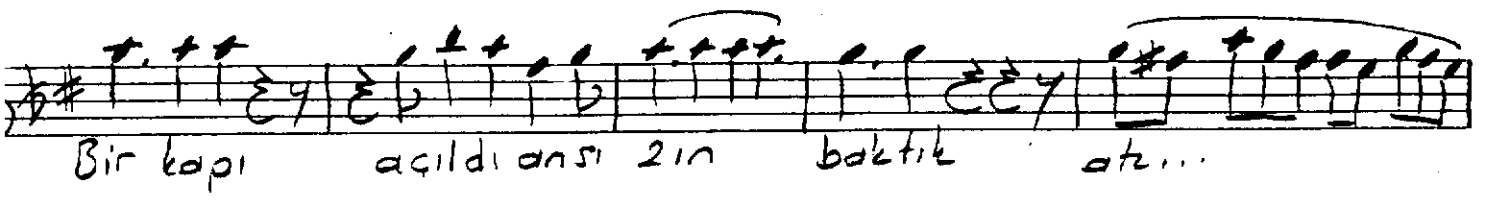
(1)

Anem ve Akşam

Beste: Gönül Paşazade

Şiir: Hilmi YAYLI

URCUNA (♩=120)



(2) , (♩ = 60) SOFYAN 6/8

Saz ... Litt...

Ah akşamdan bile ürüyor so çok (Dönüşler saz ile,

her yer alacak raniye gur bet soldu dinnem so lar ken göb

len ve tül bent ve akşamın ucu na doğru yoluma çık Litt...

ÇUCUCUVA

Bir türküsöylen di Ah - - -

- - - Ah neyin ta di var

ge bil di ki bir başına kaldı o tür kü

Ka pi lar ar kamızdan ka pan ma di lar

W. Mümtaz