

Composée et humblement dédiée
à Sa Majesté Impériale
Le Sultan ABDUL-HAMID KHAN II
à l'occasion de son avènement Au Trône



R. Bontillie



Marche Orientale

POUR PIANO

PAR

C. GUATELLI

Prix : 3^f.

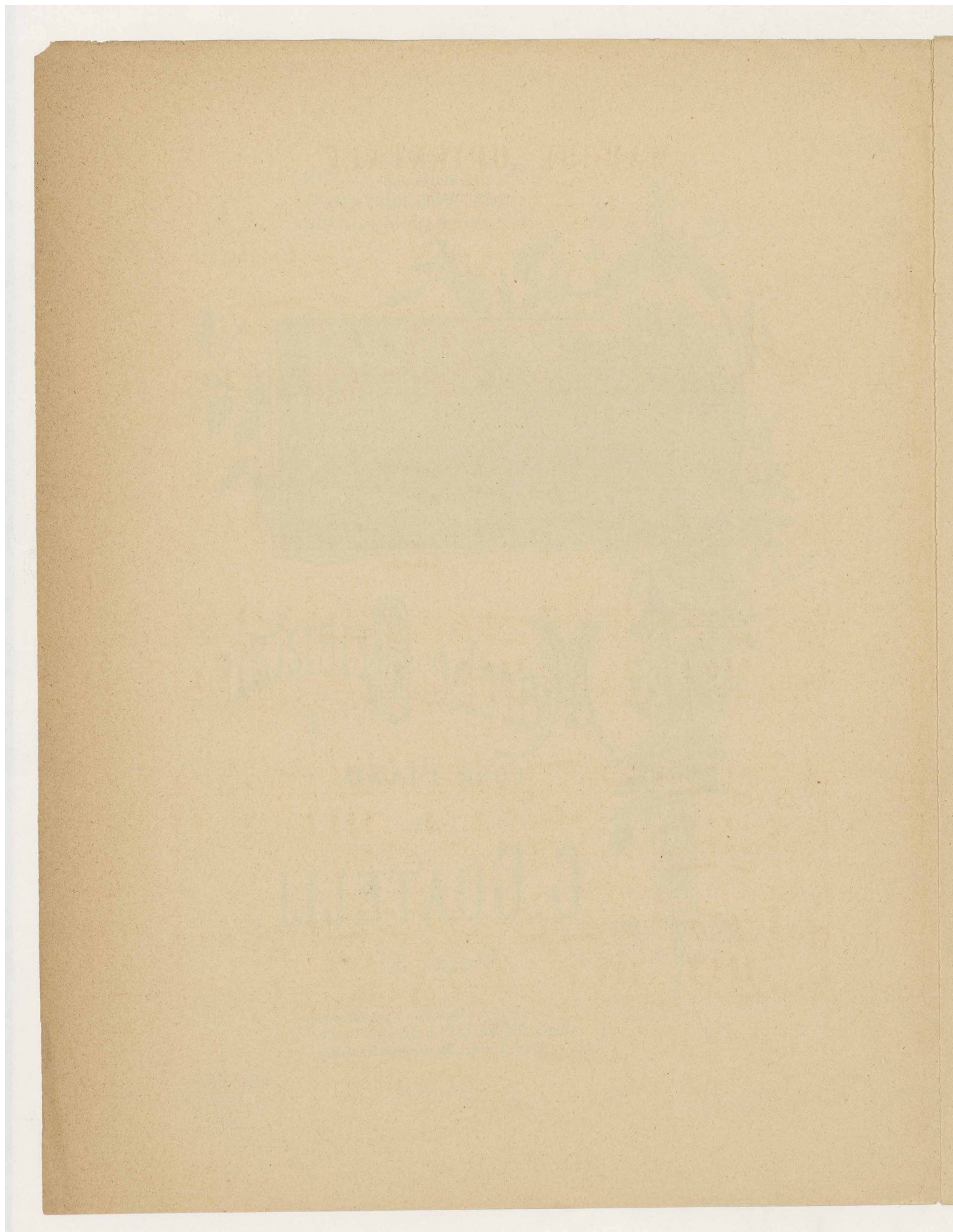
Tous droits d'exécution publique & de reproduction réservés
Paris, P. SCHOTT & C^{ie} 70, Faubourg St. Honoré, 70
Maisons à Londres, Mayence, Bruxelles & Sydney.

1893

Imp. Delanoy & C^{ie}, Paris



V^m 12 12233



MARCHE ORIENTALE

Composée et humblement dédiée
à
SA MAJESTÉ IMPÉRIALE
LE SULTAN ABDUL-HAMID KHAN II
à
l'occasion de son avènement
Au Trône

Par C. GUATELLI.

PIANO

tr tr

tr tr

p

f p

f p

A musical score for a piano piece titled "The Rose Tree". The score is written for piano (p) and features a treble and bass clef. The key signature is one flat (B-flat). The tempo is marked "Allegretto". The score includes a piano introduction, a first section, and a second section. The first section is marked "f" (forte) and the second section is marked "p" (piano). The score is written in a single system with a treble and bass clef. The first section is marked "f" (forte) and the second section is marked "p" (piano). The score is written in a single system with a treble and bass clef. The first section is marked "f" (forte) and the second section is marked "p" (piano).

ff

p

f

p

1^a 2^a

ff

D.C.
al fine.

