

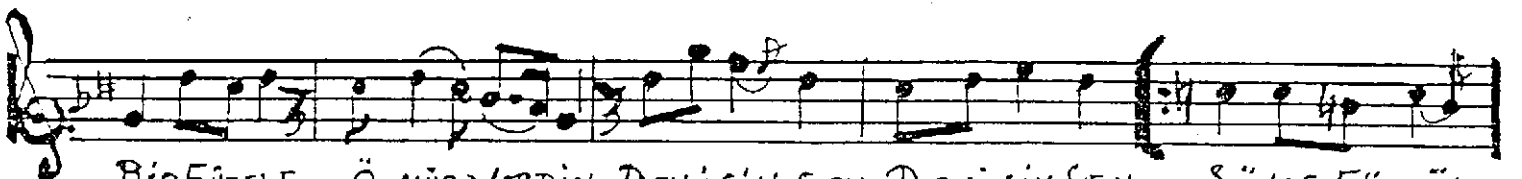
BÜFTE = MUSTAFA TÖNDEMİR  
BESTE = BÜNDÜDÜ DOĞAN

# DELİSİN SEN NİKBİZ

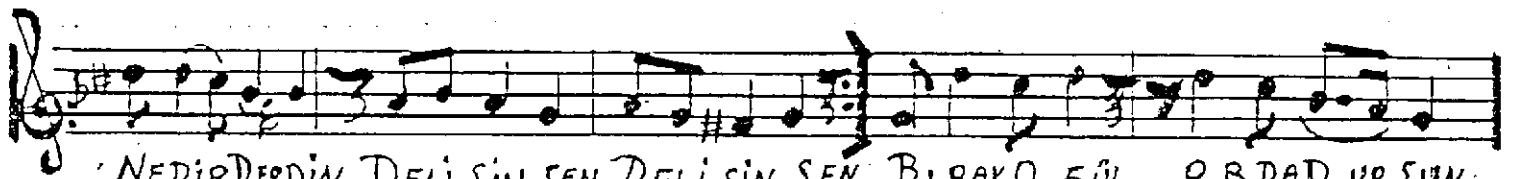
♩ = 140 ~~4/4~~  
DÜYEK =



ARA NAĞME



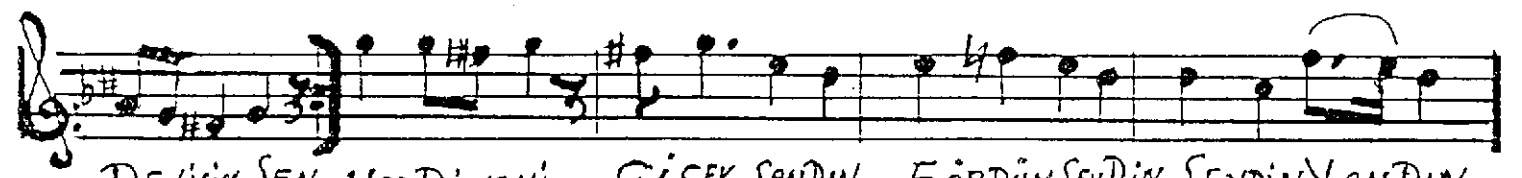
BİR BÜZELE Ö MÜR VERDİN DELİSİN SEN DELİSİN SEN SÖYLE BÖ NÜL



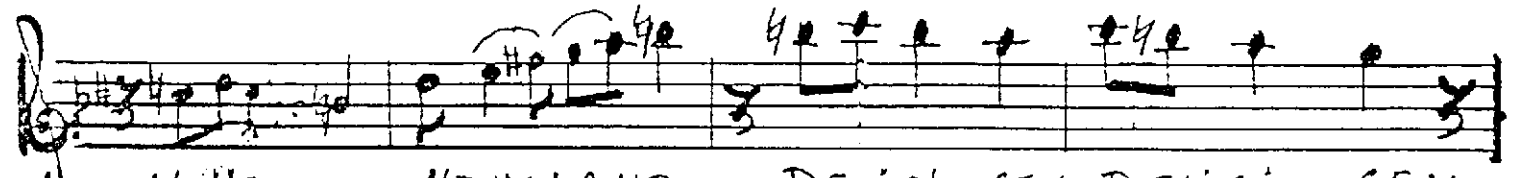
NEDİR DEDİN DELİSİN SEN, DELİSİN SEN BİR AKO BÜL O R DAD URSUN



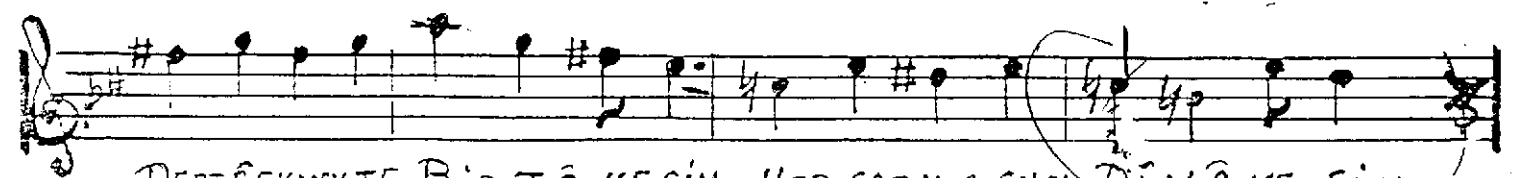
DÜŞÜNMESEN U NUTUR SUN DERTİ DERTLE A VUTUR SUN DELİSİN SEN



DELİSİN SEN HER Dİ KENİ ÇİÇEK SANDIN BÖRDÜNSEVDİN, SEYDİN YANDIN



NE USANDIN NE US LANDIN DELİSİN SEN DELİSİN SEN



DERT ÇEKMEKTE BİR TÂ NESİN, HEP SARHOŞ SUN Dİ VÂ NE SİN



BİR KAPANMAZ MEYHÂNESİN DELİSİN SEN DELİSİN SEN

