

Hafif

BİR GONCA FEMİN

BEYAT I

Dede Efendi

(♩ = 40)

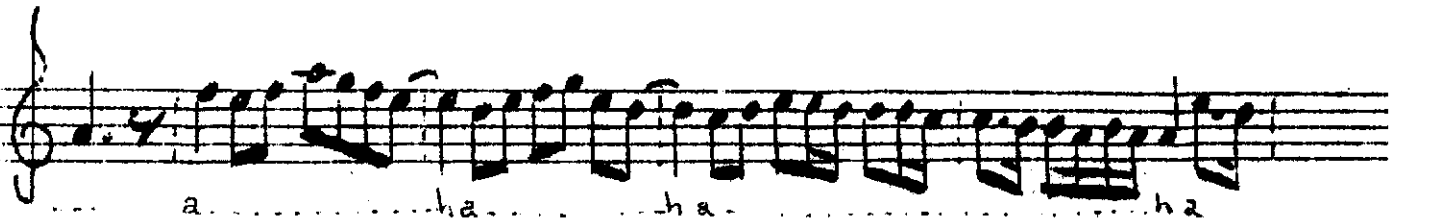
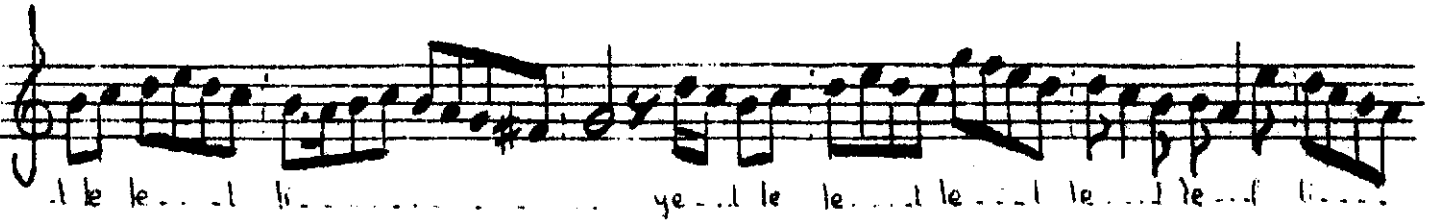
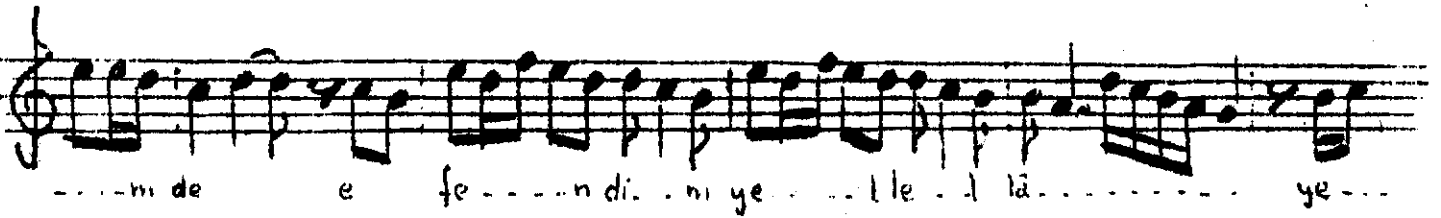


BİR GONCA FEMİN (2)

Kafif

B E Y A T İ (Deham)

Dede Efendi



Bir gonca femin yâresi vardır ciğerimde
Ateş dökülürse yeridir ah serimde
Her lâhza hayalî duruyor didelerimde
Takdire nedir çare bu varmış kaderimde...