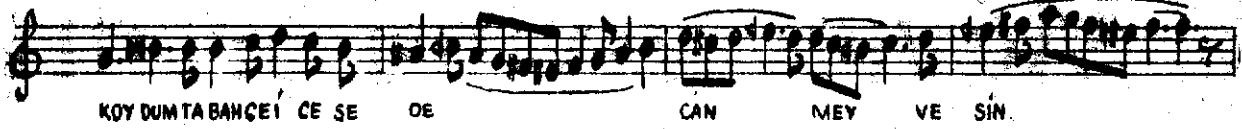
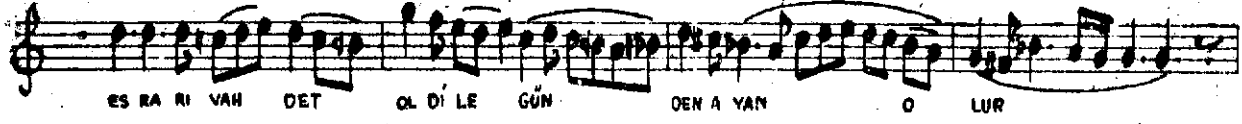


Nikriz Ayin-i Şerîf

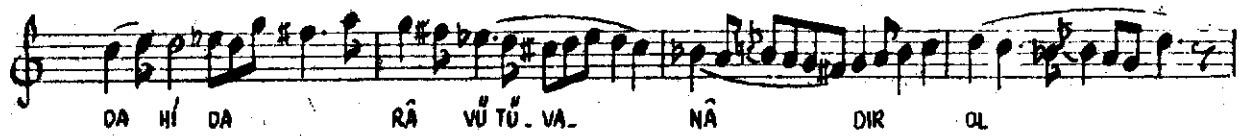
[1. SELÂM]

ÂÜSEYİN SADETTİN AREL

Devr-i ravân (♩-120)

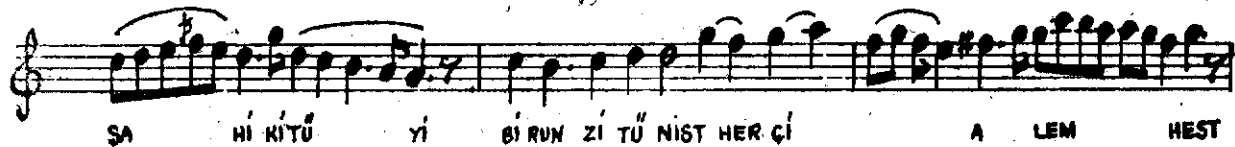


DEVR A VE MI NUH RE VA ZI EF LAK
 A) RAM DI HI TA BI A TI HAK
 AS SA RI SE HA YI BI ZE MIS TAN
 RES SA MI SA HA YI FI GU LIS TAN
 MIG - MA RI BI NA YI CAR ER KAN
 BA RU KE SI SEH R BEN DI IM KAN
 1 SI RA ZE KE SI KI TA BI IM HAN
 2 MEC MU A NU VI SI KA NE ME KAN
 AK REB NI HI SA A TI SE MA VAT
 MI ZAN DI HI CAR SU YI EV KAT
 SUB HA NAL LAH ZE HI SA NA YIG
 MA AN SE NE HA ZI HIL SE DA YIG





[3. SELÂM] Durak Evferi (♩ = 128)

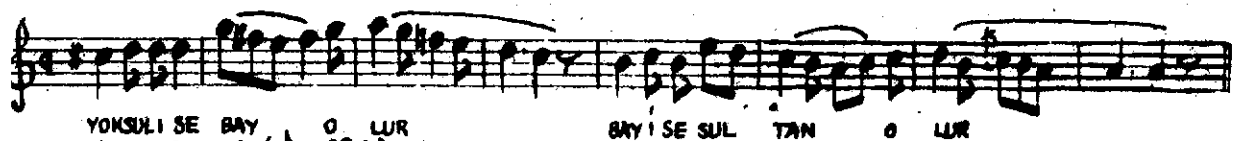
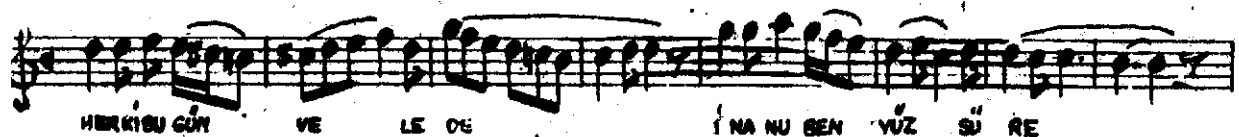
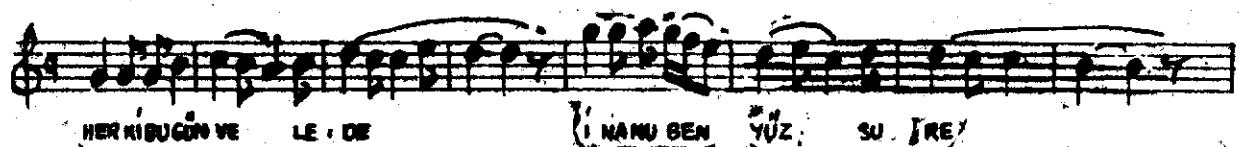
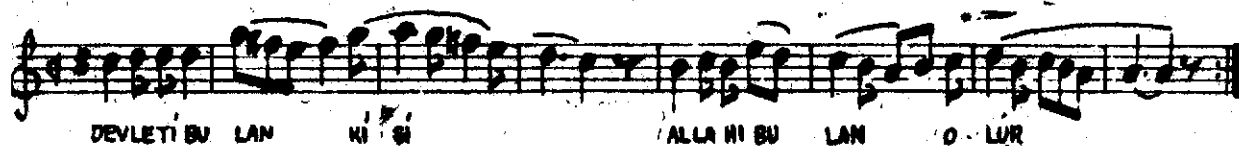
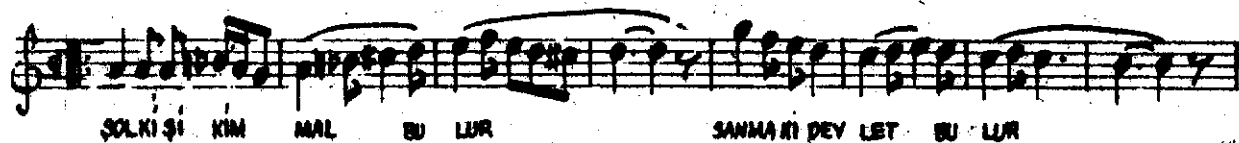
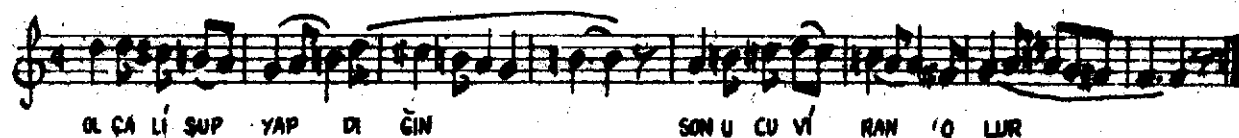
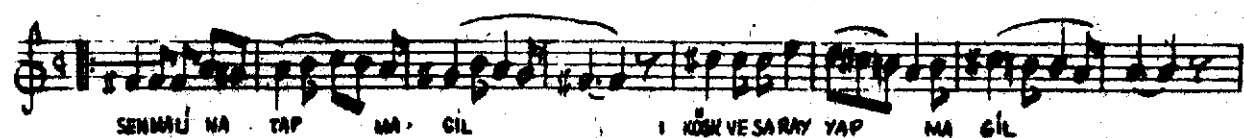


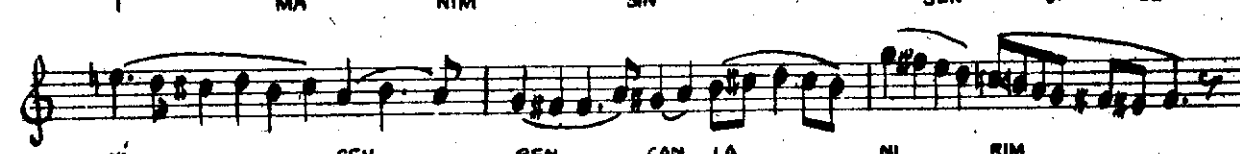
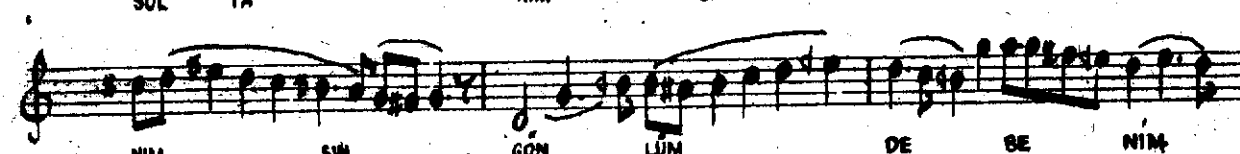
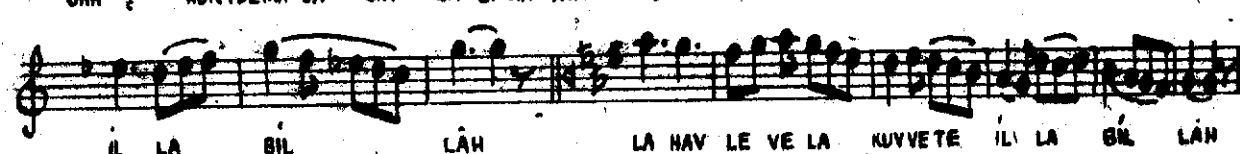
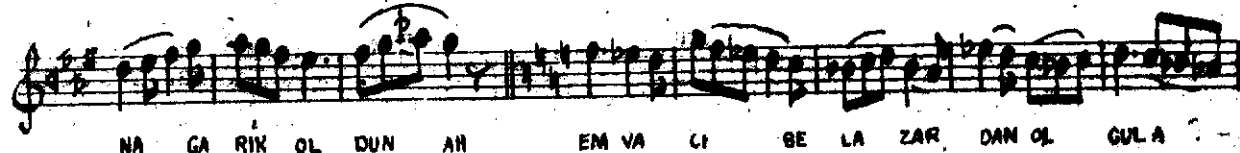
Aksak Semai (♩ = 152)



Yürük Semai* (♩ = 120)







NİM SIN SEN SİZ BA NA EK MEX
HEP A GÜ DÜR EK MEN LE
SU YUM CA NA NİM SIN
SEN DEN GE LE ÇEK A GÜ
PEN ZEHR DİR TAT LI SE KER
SI YA NİM SIN