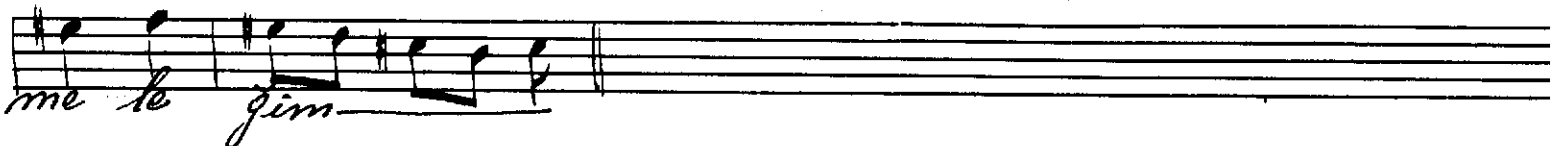
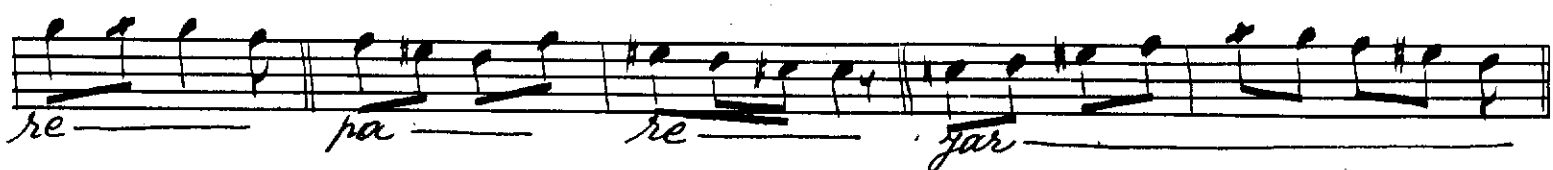
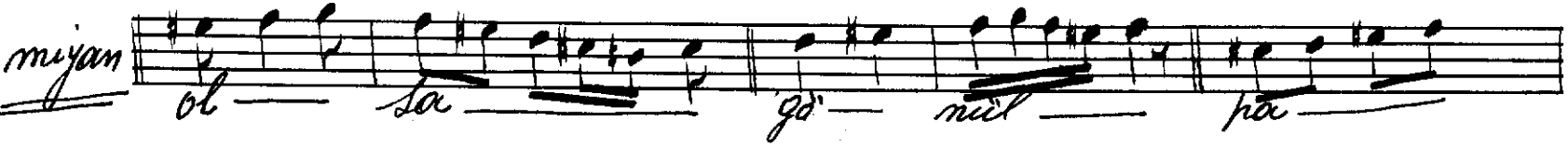
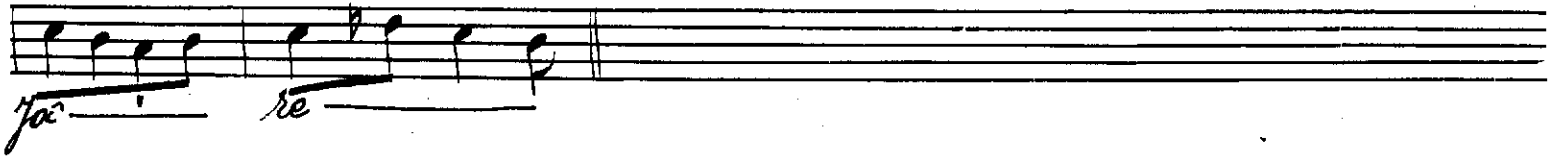
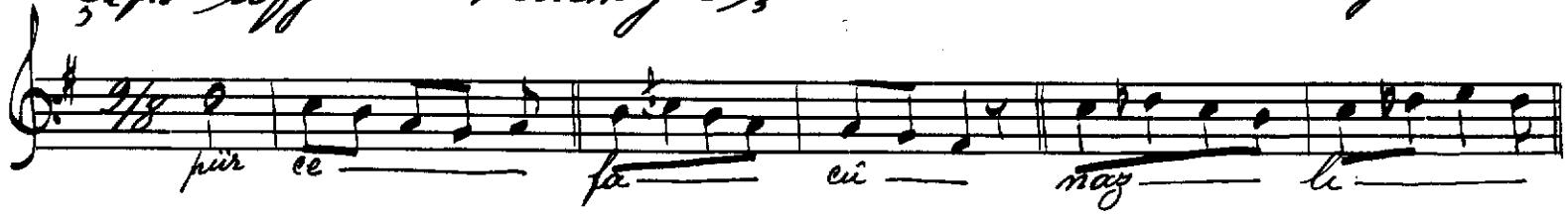


Çiftö Sofyan Bestenigar faskı

Temet ağız men



^{816 ağız en}
Pürcefa-ei I nazlı päre
Diş olub gancım lü näre
Olşa gönül päre päre
Mühtelâgım Varım çäre

^I
Dilke âtes böyle Kalmaz
Lüz-i aşk artar çöşalmaz
Töylesen gönül söz olmaz
Mühtelâgım Varım çäre

28.2.956

Ummu P. J. 1956
Cem