

DÜYEK

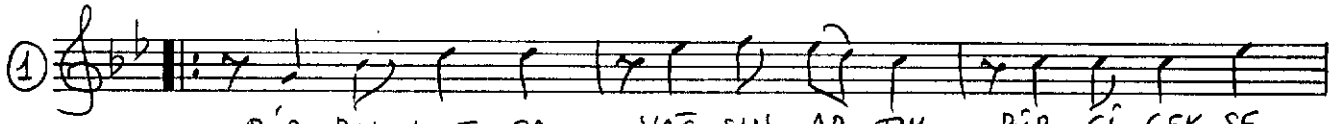
NİHAVEND FANTEZİ

MÜZİK: UZMAN SAĞLIK

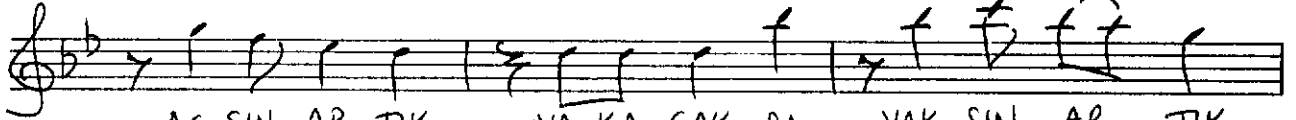
SÖZ: KÂMİL ALTAY

D=208

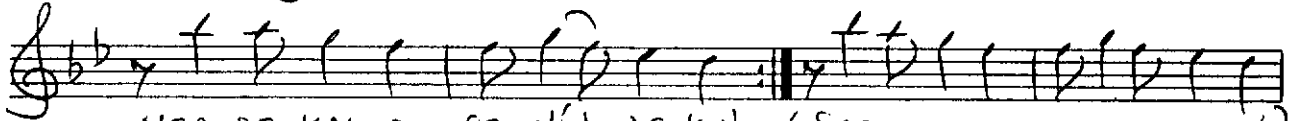
BİR BULUTSA YAĞSIN ARTIK



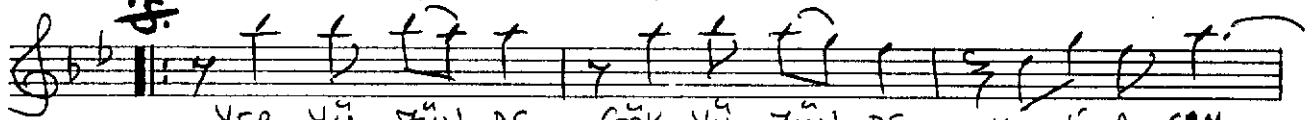
BİR BU LUT SA YAĞ SIN AR TIK BİR Gİ GEK SE



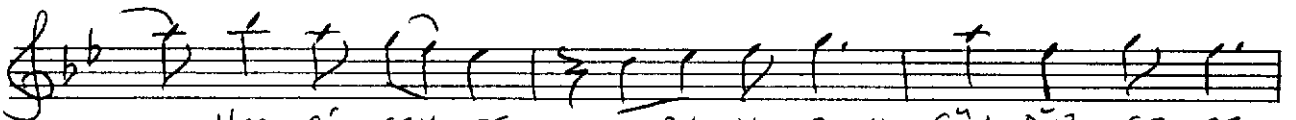
AĞ SIN AR TIK YA KA CAK SA YAK SIN AR TIK



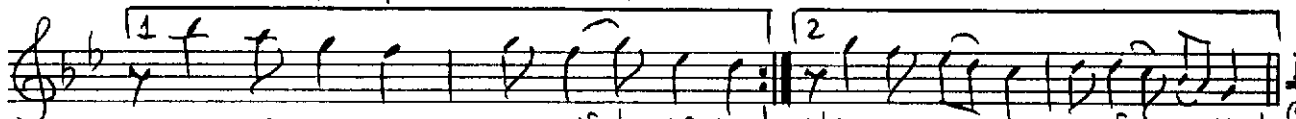
NER DE KAL DI SE NİN AŞ KIN (SAZ - - - -)



YER YÜ ZÜN DE GÖK YÜ ZÜN DE YE Nİ A ÇAN



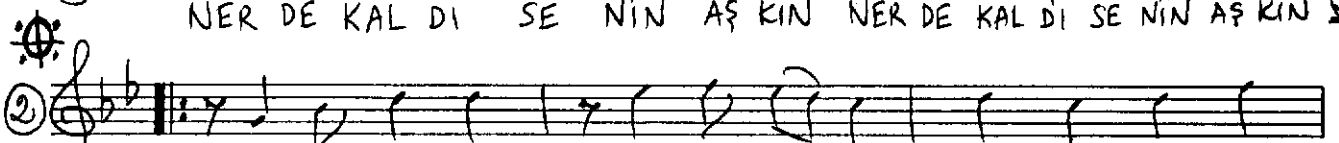
HER Gİ GEK TE A RI YO RUM GÜN DÜZ GE CE



NER DE KAL DI SE NİN AŞ KIN

D.C.

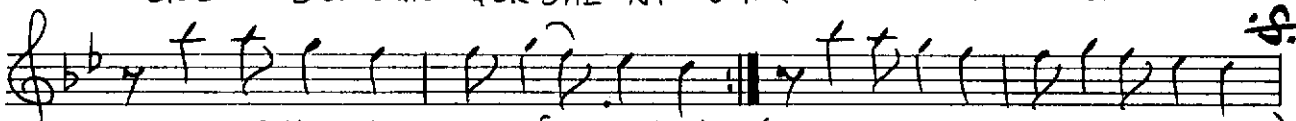
(SON)



FAL LA RIM DA GİK MI YOR SUN HİÇ RÛ YÂ MA



GEL Mİ YOR SUN GÖK YAL NI ZİM BİL Mİ YOR SUN



NER DE KAL DI SE NİN AŞ KIN (SAZ - - - -)

BİR BULUTSA YAĞSIN ARTIK
BİR ÇİÇEKSE AÇSIN ARTIK
YAKACAĞSA YAKSIN ARTIK
NERDE KALDI SENİN AŞKIN ?

YERYÜZÜNDE, GÖK YÜZÜNDE
YENİ AÇAN HER ÇİÇEKTE
ARIYORUM GÜNDÜZ GECE
NERDE KALDI SENİN AŞKIN ?

FALLARIMDA ÇIKMIYORSUN
HİÇ RÜYAMA GELMİYORSUN
ÇOK YALNIZIN BİLMİYORSUN
NERDE KALDI SENİN AŞKIN ?