

NİHAVEND FANTEZİ
BİR BİL SEN ŞU GÖNLÜMÜN

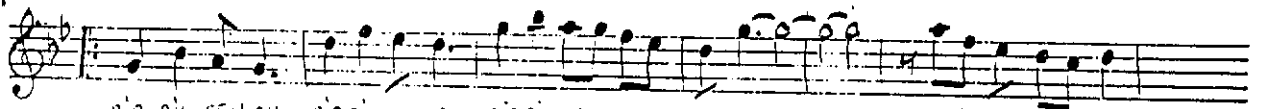
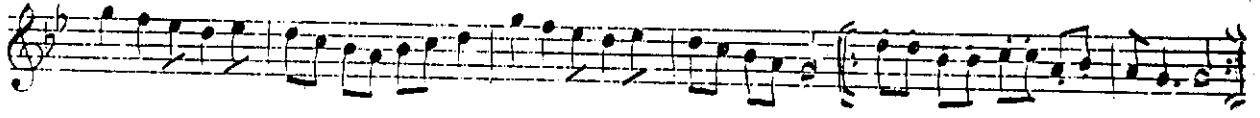
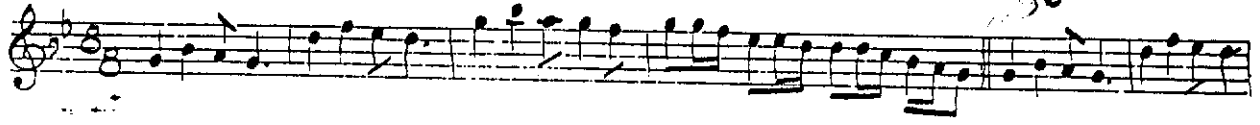
BESTE VE SÖZ
YUSUF NALKESEN

SÜRE 5.30

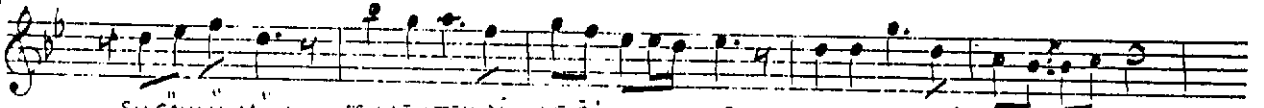
AYEK

MÜZİK

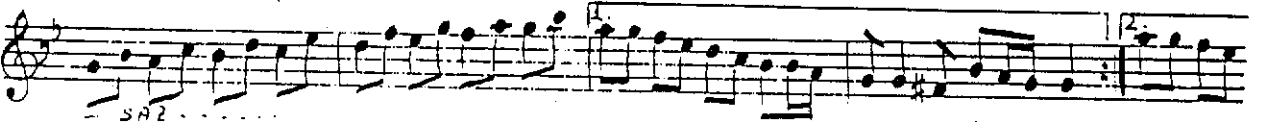
96



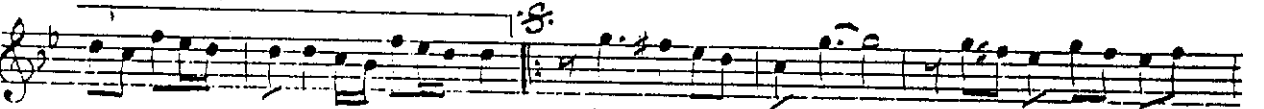
BİR BİL SEN AH BİR BİL SEN AH BİR BİL SEN AH ŞU GÖNLÜ MÜN



ŞU GÖNLÜ MÜN SENDEN TEK Dİ LEĞİ NE SENDEN TEK Dİ LEĞİ NE



SAZ



GEL ARTIK GEL GEL ARTIK

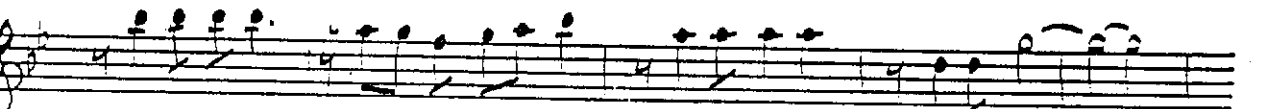


GEL SON SON SON NERE LİM YILLARIN ÖZ LEMİ NE

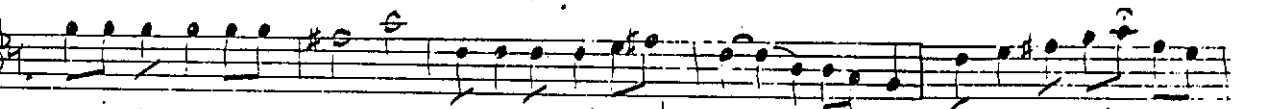


YILLARIN ÖZ LEMİ NE

SAZ



GİRME Dİ HİÇ KİM SE LER DİL KİM SE LER BİL SEVGİ LİM



SENİN OL DUM OLA LI O KALBİMDEKİ YERİ NE KALBİM DE Kİ YERİ



NE

SAZ