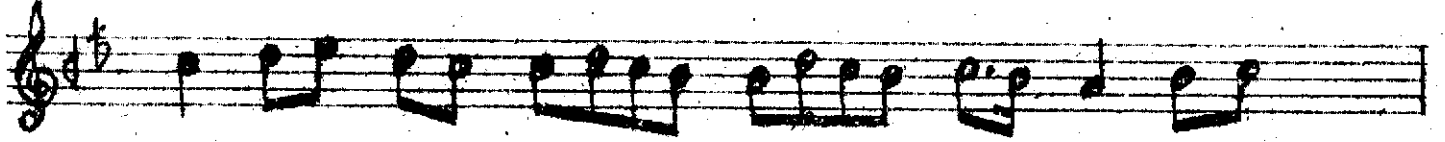
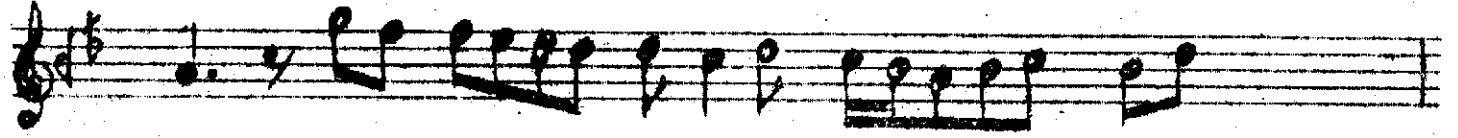


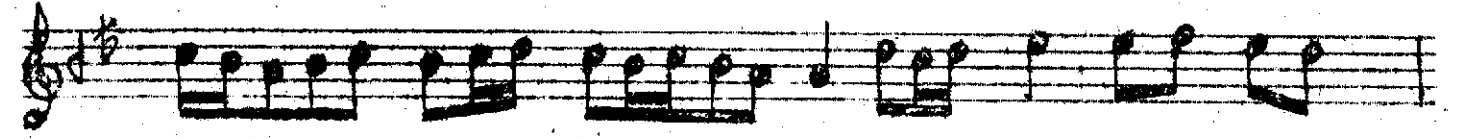
Ah bi lîn di bu
Ah ga rgz ne a



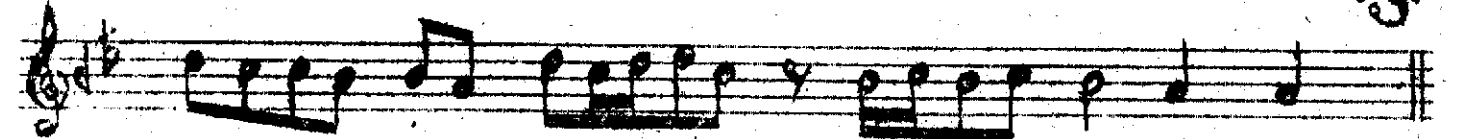
se ye ka yok ya
şl ka cev rit



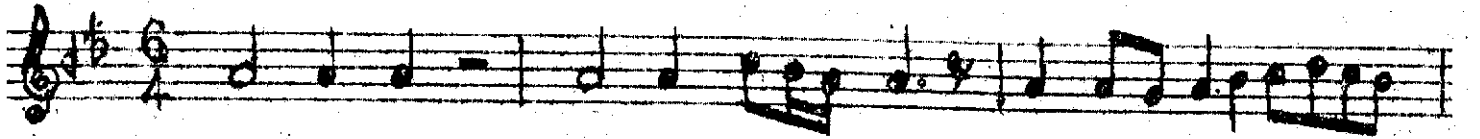
rîn iz nî gel
ne den 8 pûl



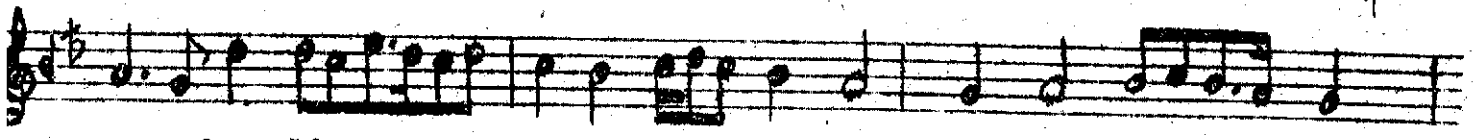
ne ne ne ne



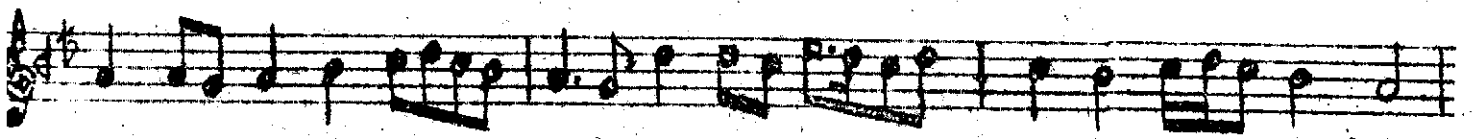
ne den ey
ne den ey



Yar ey al ca medenak

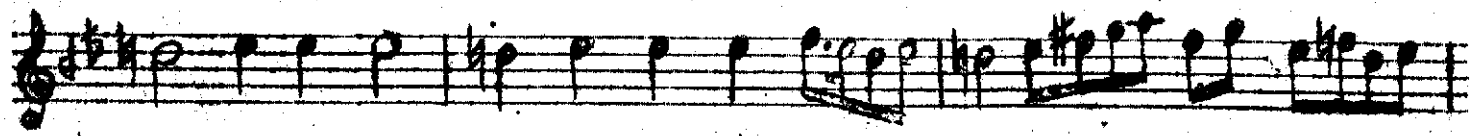


şan be li ca na ne a çıl mış



sub hol mış a çıl mış şe fak ak na ne a çıl

S A B A ağır semainin
devanı



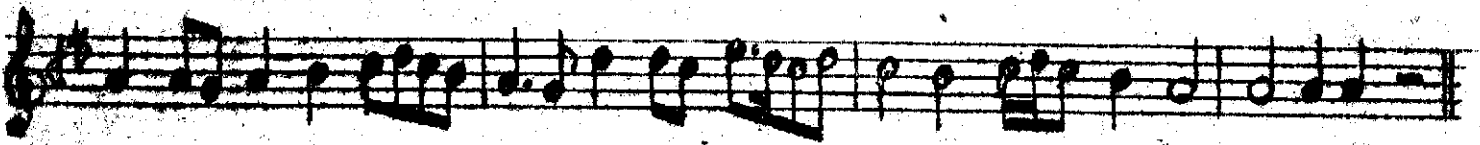
niş düz di ni ge hi ham çe ri le



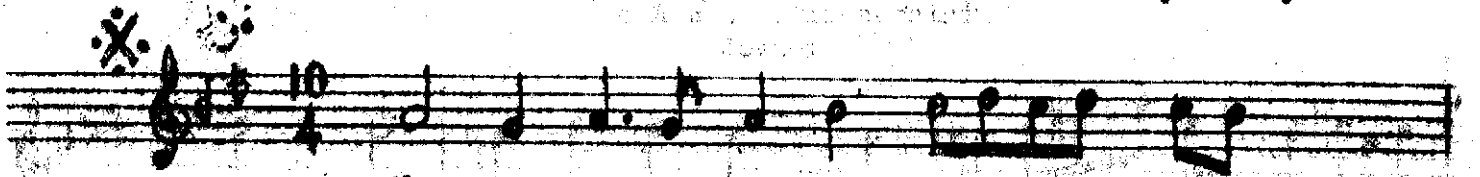
bel de ge zer ken dūz dī ni ge hi



han ge ri le bel de ge zer ken



şah ri di li us şa ki na çok ha ne a gıl mış



Ah ga raz ne a
Ah te red dūt ey



| | | | |
|----|----|-----|-----|
| ş1 | ka | cev | rit |
| le | ne | | duş |



ne den -ö pul
ne si gö züh



ne
ne

Saba nakış ağır senainin devamı



ne den ey yar
ne den ey yar

Ah bu ta hir a

na gi rif tar

tar i kon ne bağ

lan lan dan

BİLİNDİ BUSEYE YOK YARIN İZNİ GELMEMEDEN
GABAZ NE AŞIKA CEVRİTMEDEN ÖPÜLMEMEDEN
AİCAMEDEN AKŞAM BELİ CANANE AÇILMIŞ
SUBHOLMUŞ AÇILMIŞ ŞEFAK AMMA NE AÇILMIŞ
DÜZDİ NİGEHİ HANÇER İLE BELDE GEZERKEN
ŞEHRİDİL UŞŞAKINA ÇOK HANE AÇILMIŞ
BU TAHİR ANA GİRİFTAR İKEN NE BAĞLANDIN
TEREDDÜT EYLEME Bİ DÜĞMESİN ÇÖZÜLMEMEDEN