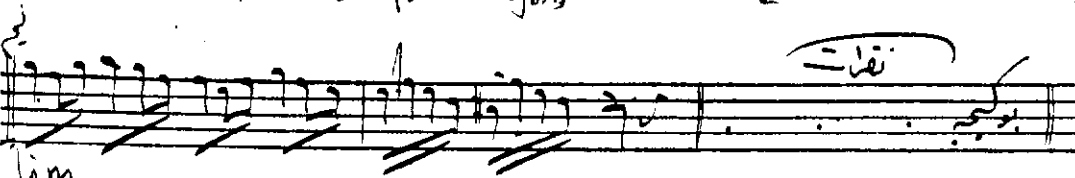
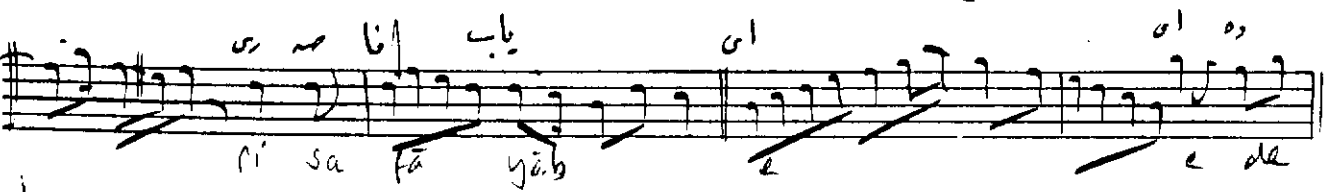
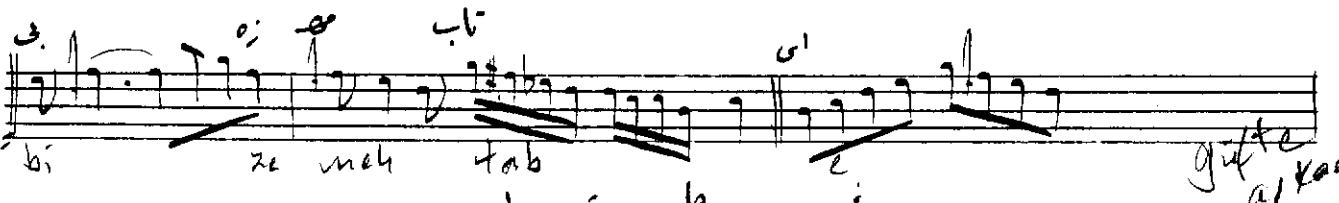
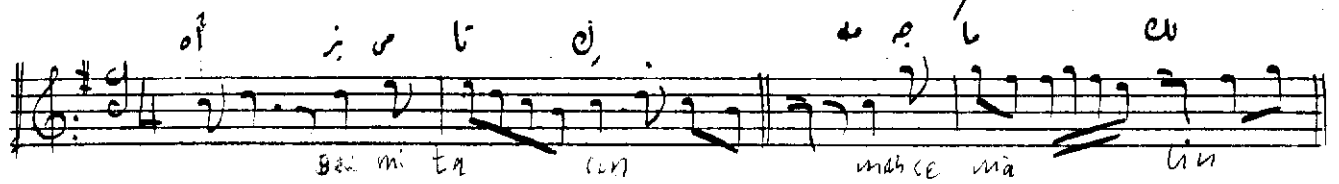


Harry G.

Begun... mel-riatit il pimat... بلا



ملانيك مطبعه سي

Tar: Kalamale 1st

Bem: ^(tāri) tārū

Bu gece meclise gel biz bize mehtab edelim

Dil-i mihnet-zedeği bāri safa-yāb edelim

Bu gece meclise gel biz bize meclis edelim

Bu gece meclise gel bir bise meclab edetin
 ? (+) Etmek üflet ile ağbet bezm: miz bezm-i mehabbat-
 meclab edetin

Pak ricayalarım en dilber-i hursid-i nazir

Külbek-Tresniéyle Bestimmung Tenör

1. Me bodol mupiken mah- mūnir (-)

Bu gece meclise gel biz bize mehtab edelim

~~March~~

İste bedr olmasın hem mehi taban-
nıdır