

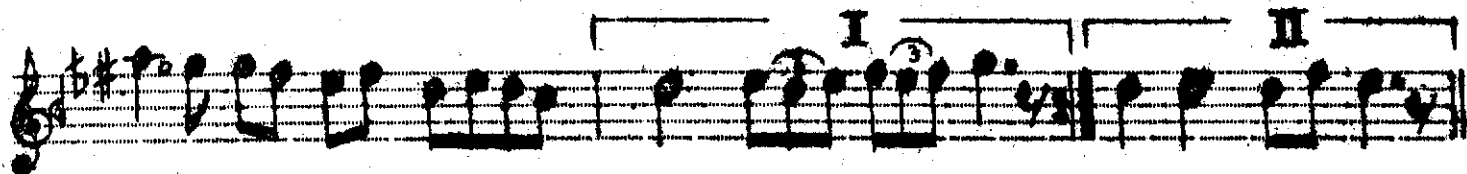
BEYA TIARA BAN

(Ağyar ile ey gonoe sen iç badei gülün)

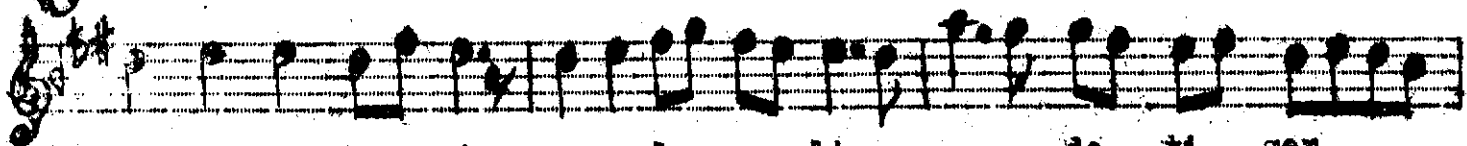
DABA HAMPARSUM

YURUK SEMAİ

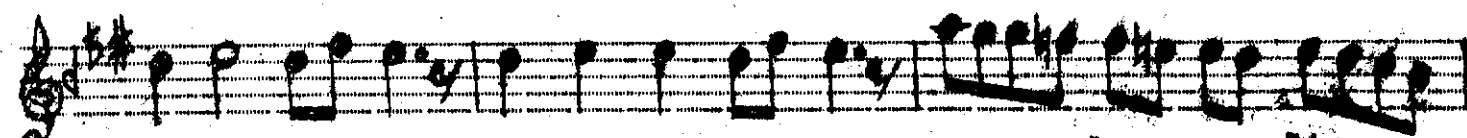
Ağ yar i le ey gon oe sen iç



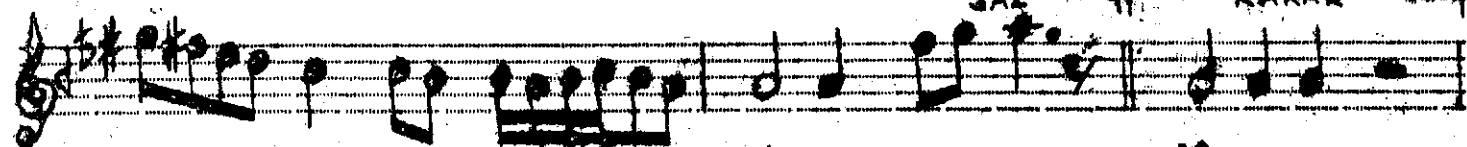
ba de i gül gün



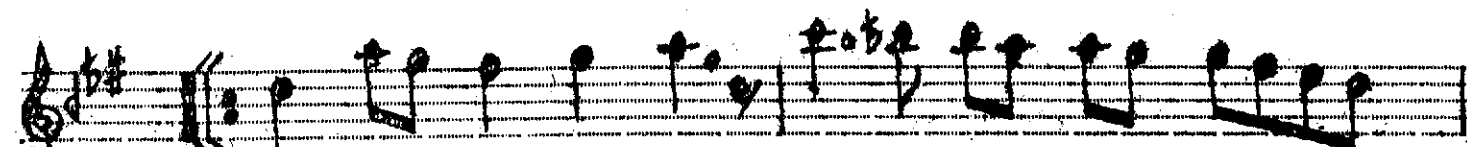
çün böy le i miş ney le ye lım a de ti ger
za ga na za ran bül bül lün hep ta li i va



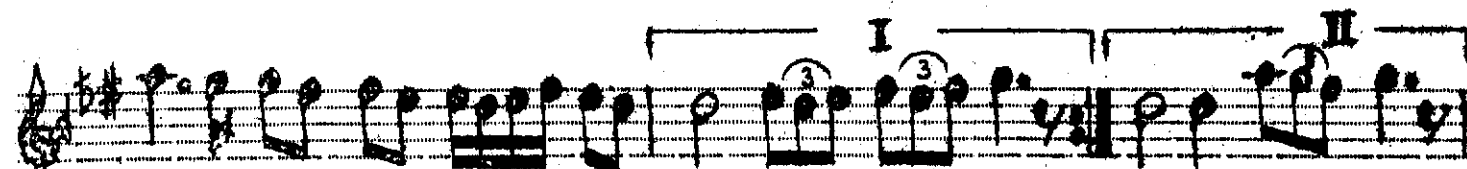
dün rün çün böy le i miş ney le ye lım
za ga na za ran bül bül lün hep



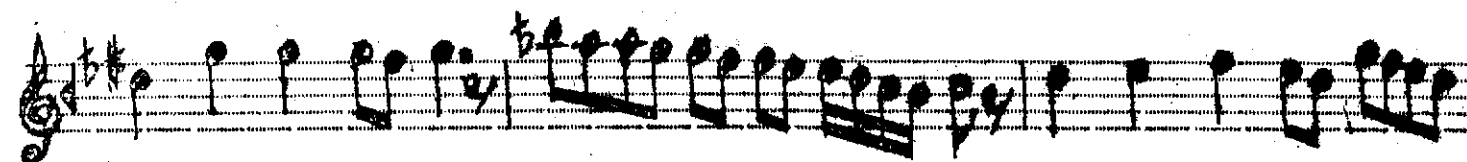
a de ti ger va dün rün dün rün



Ca nım ye le lel lel le le li



ya la ye lel li

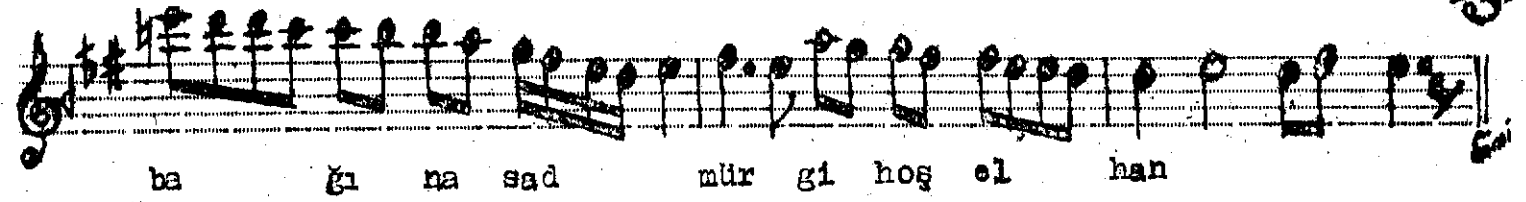
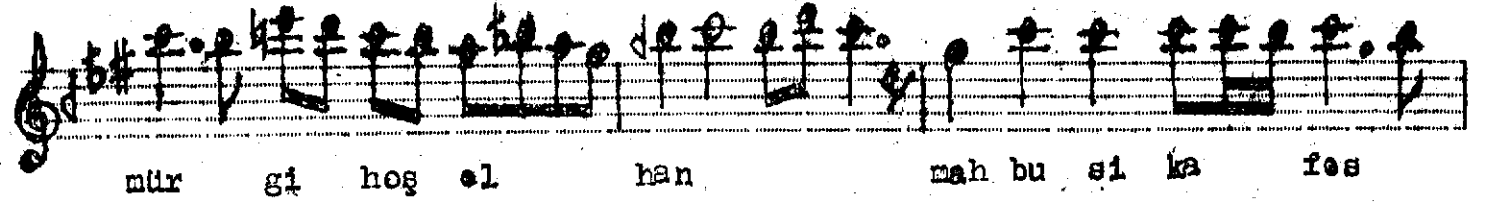
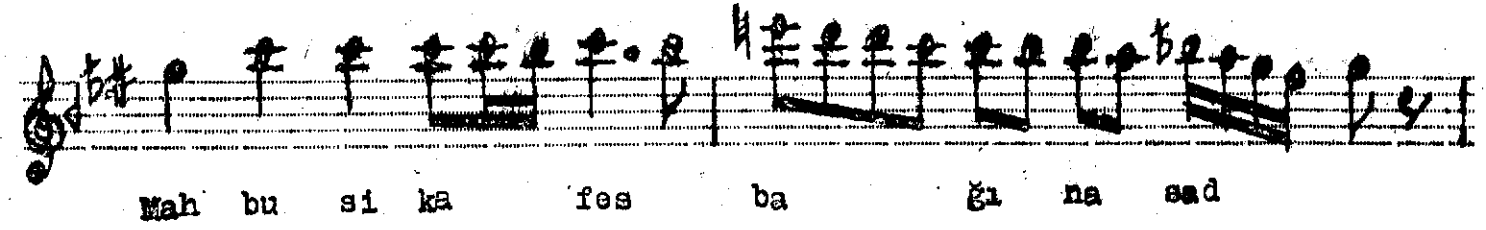
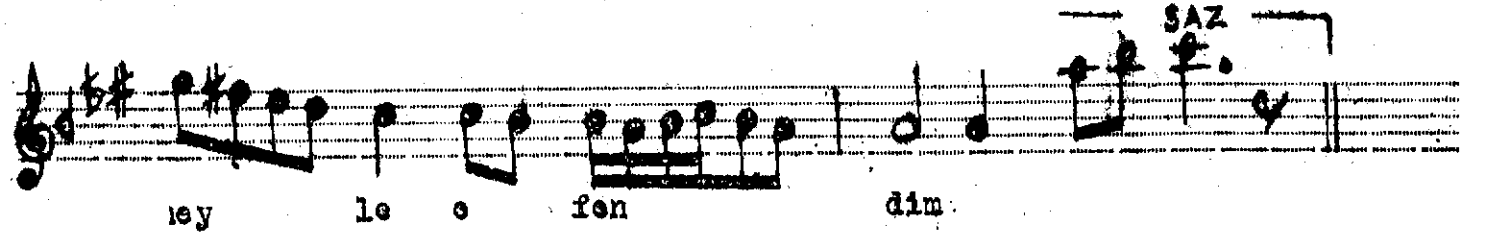
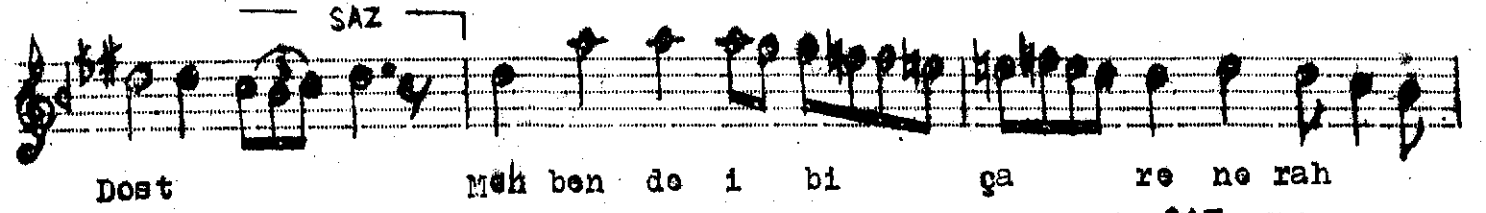


Kur ba nın o lam yar

hay ra nın o lam

/.

(Ağyar ile ey gonce sen iç badei gulgun)
(DEVAMI)



AĞYAR İLE EY GONCE SEN İÇ BADEİ GÜLGÜN
ÇÜN BÖYLE İMİŞ NEYLEVELİM ÂDETİ GERDÜN
MAHBUSİ KAFES BAĞINA SAD MÜRĞİ HOŞ ELHAN
ZAGA NAZARAN DÜLBÜLÜN HEP TALİ-i VARÜN