

İtikabı Bey

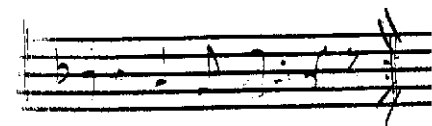
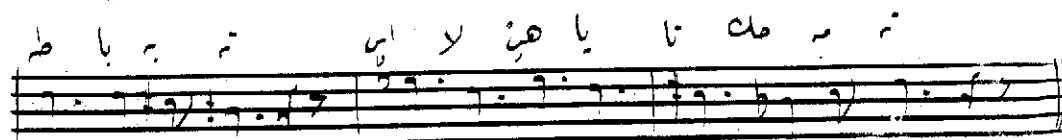
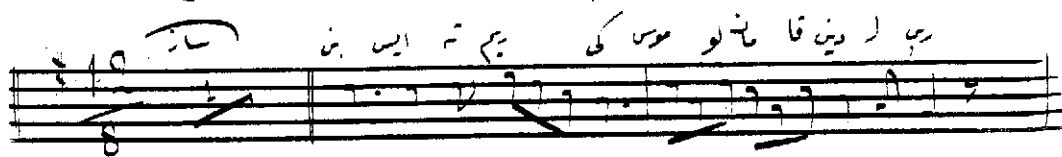
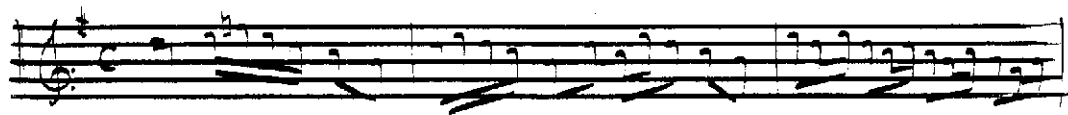
Kadın ile meşkürası

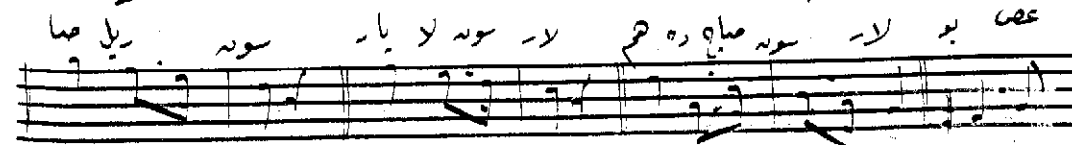
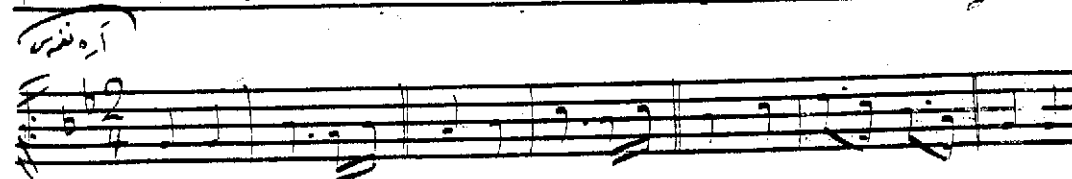
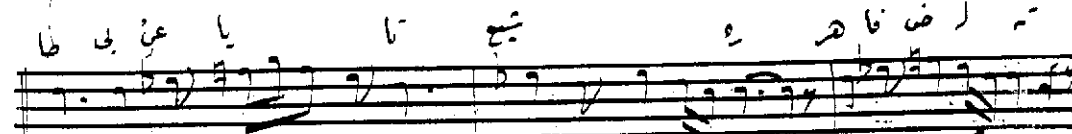
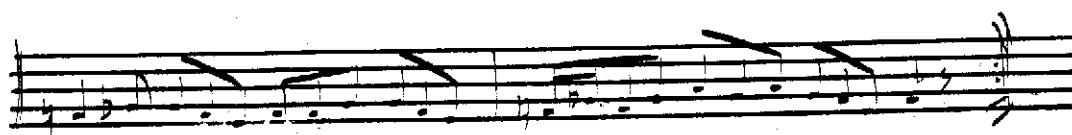
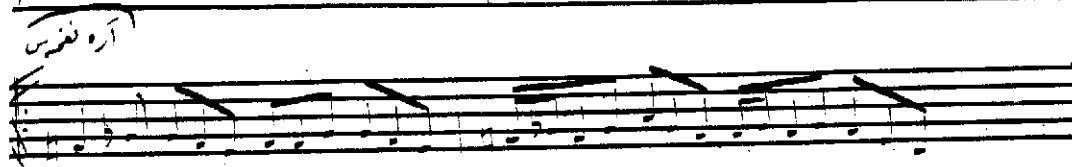
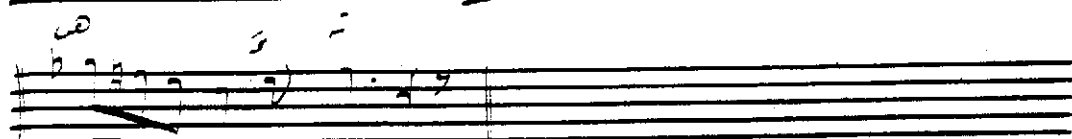
استغفار بک

قاریله مغلوره

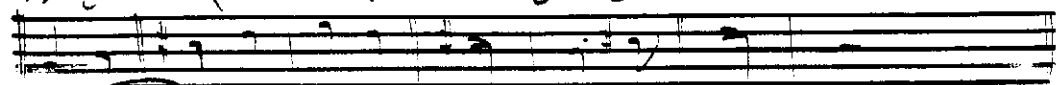
نشار

Ben isterim...

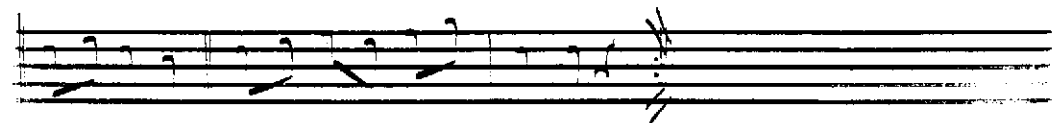
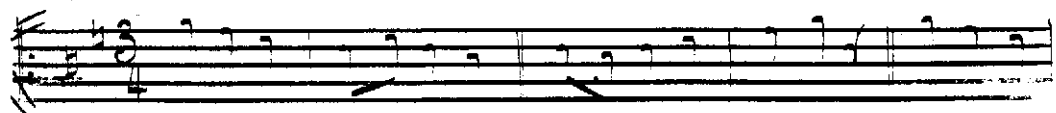




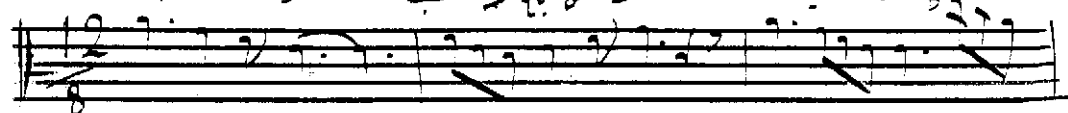
بی کی نس کو برده تمام فی ایج رس



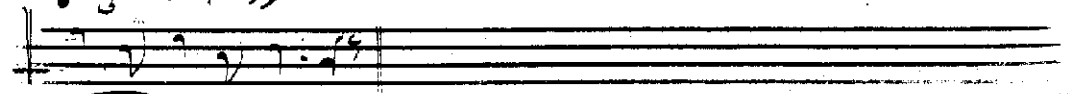
آره نفوس



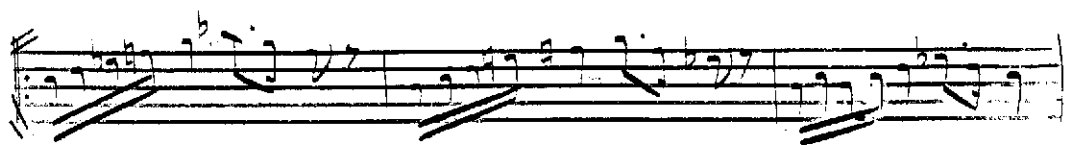
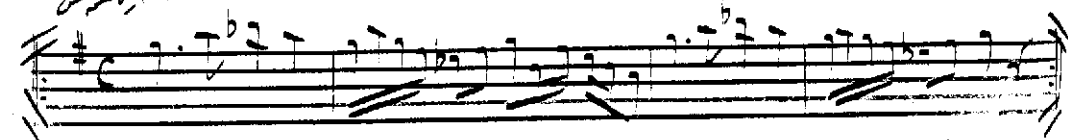
نور نس باه مد غب ده هاله ص

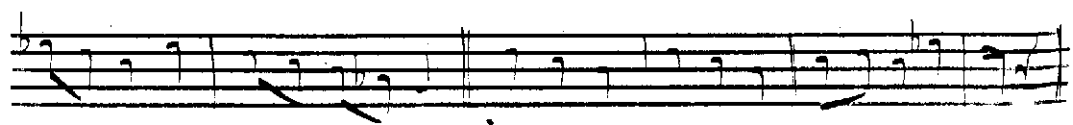
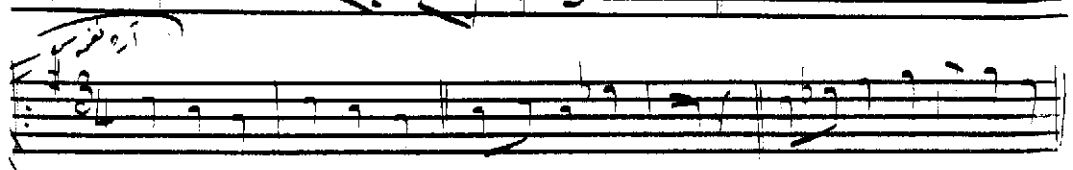
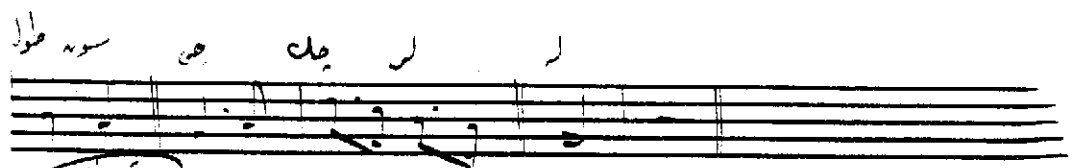
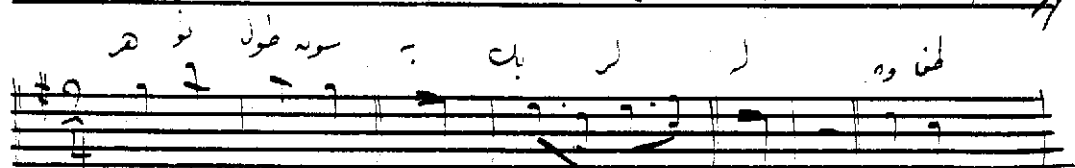
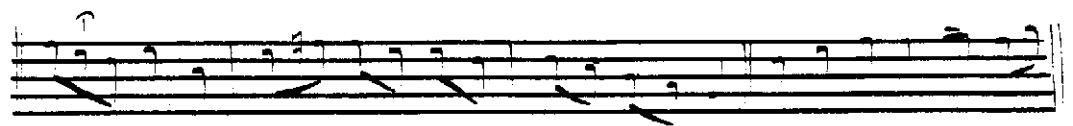


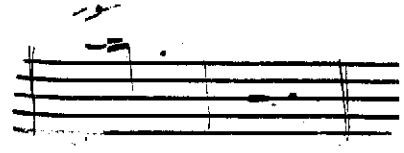
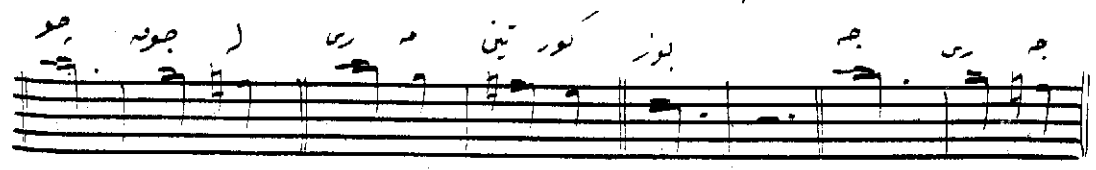
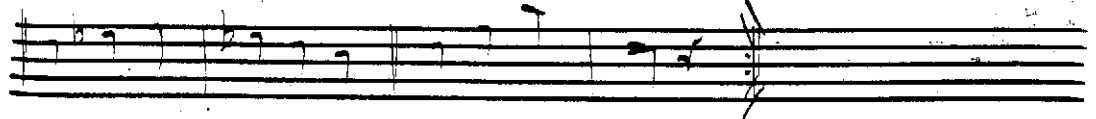
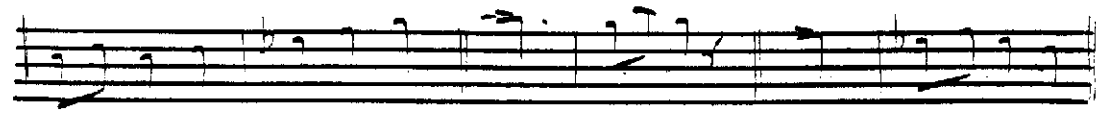
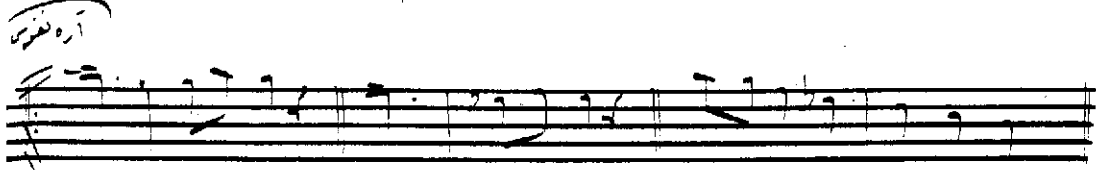
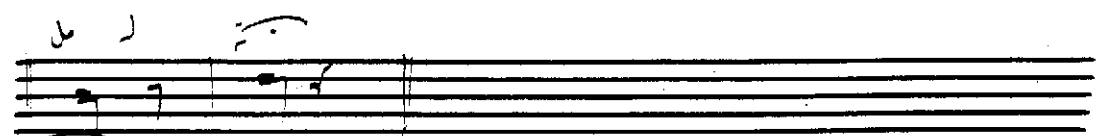
نور نه نا فی د



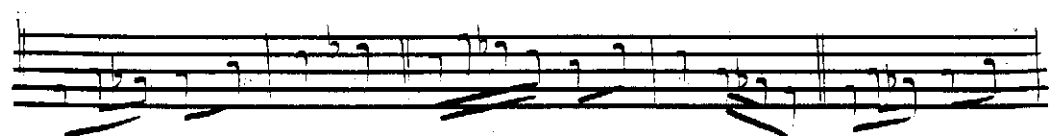
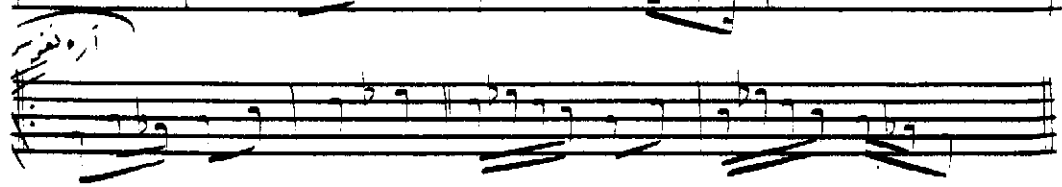
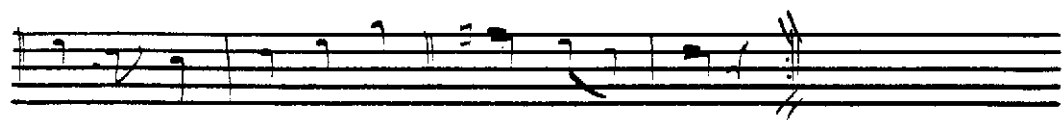
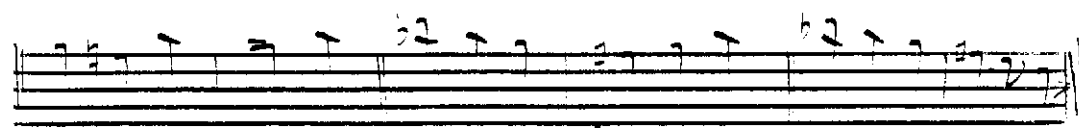
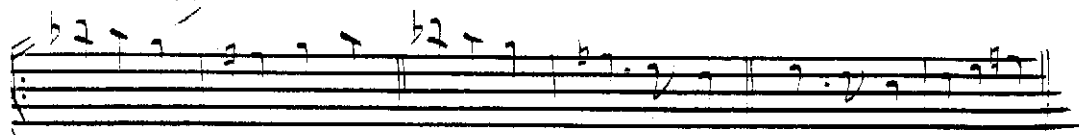
آره نفوس

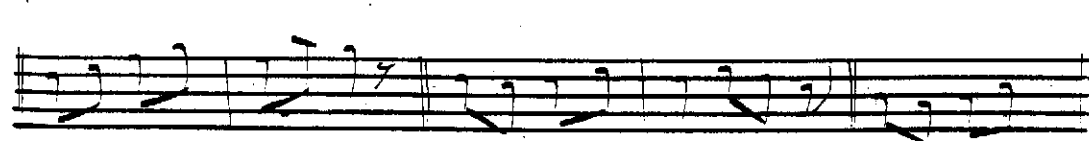
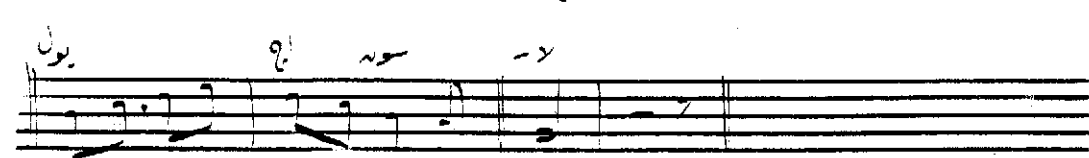
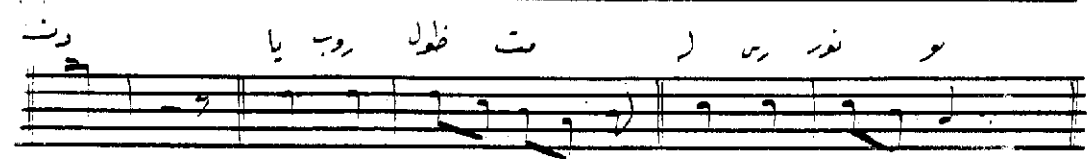
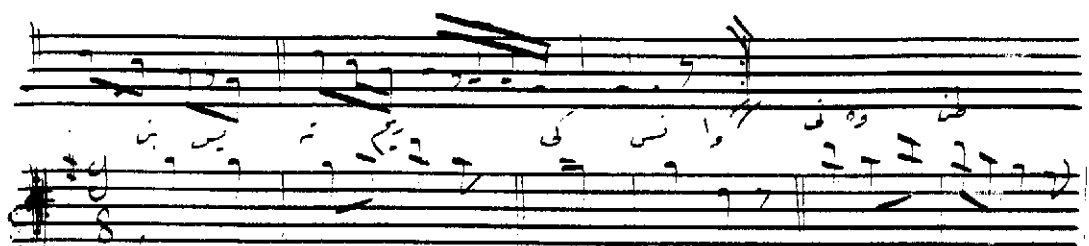






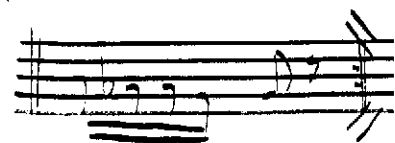
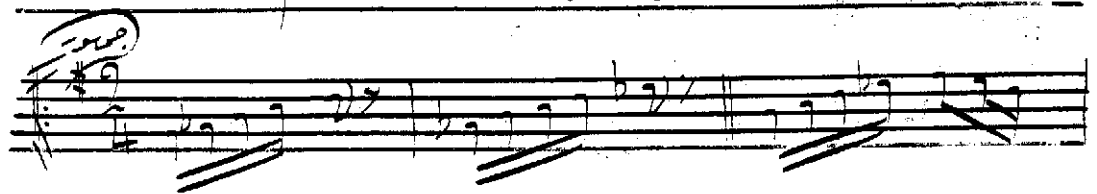
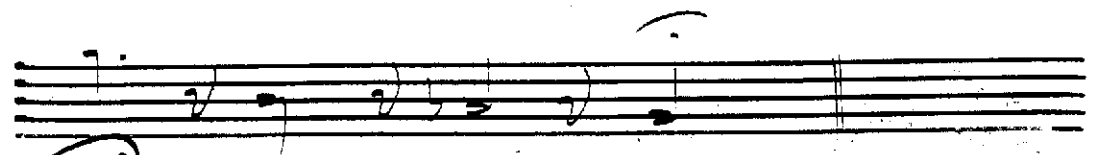
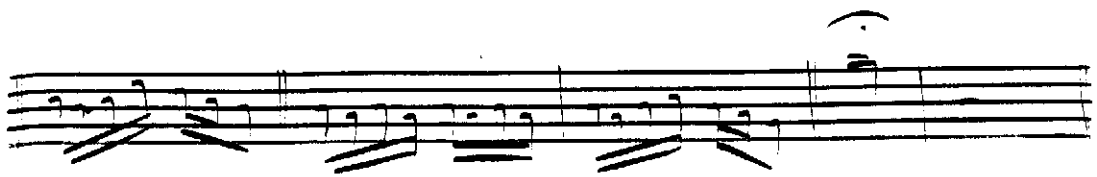
جانم آره نغمه

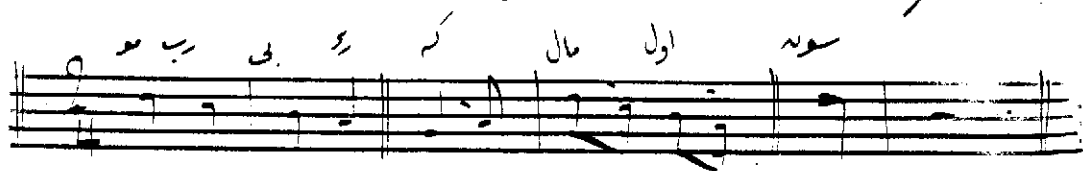
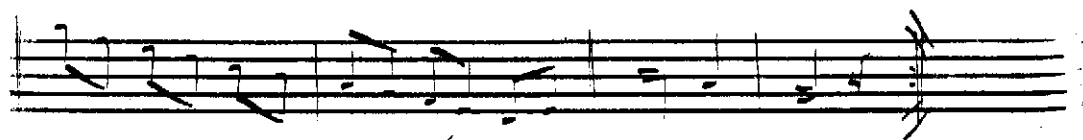
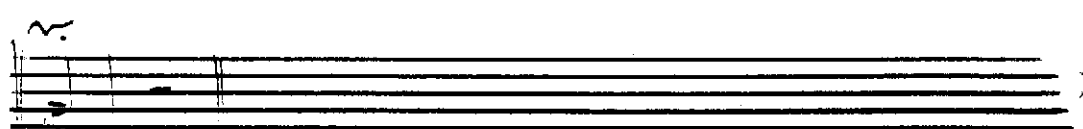




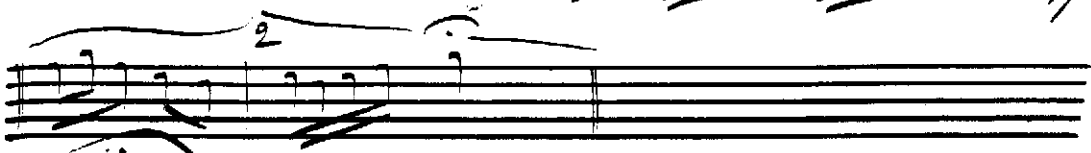
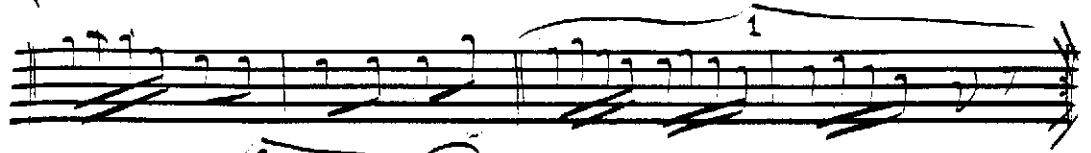
سوره نظم عظمه
سوره نظم عظمه
سوره نظم عظمه
سوره نظم عظمه
سوره نظم عظمه
سوره نظم عظمه
سوره نظم عظمه
سوره نظم عظمه
سوره نظم عظمه
سوره نظم عظمه

Handwritten musical score on ten staves. The notation includes various musical symbols such as notes, rests, and bar lines. The first staff has a key signature of one sharp (F#). The second staff has a key signature of one flat (Bb). The third staff has a key signature of one sharp (F#). The fourth staff has a key signature of one flat (Bb). The fifth staff has a key signature of one sharp (F#). The sixth staff has a key signature of one flat (Bb). The seventh staff has a key signature of one sharp (F#). The eighth staff has a key signature of one flat (Bb). The ninth staff has a key signature of one sharp (F#). The tenth staff has a key signature of one flat (Bb). The notation is dense and appears to be a complex musical composition.





أه نفيس



صولة

