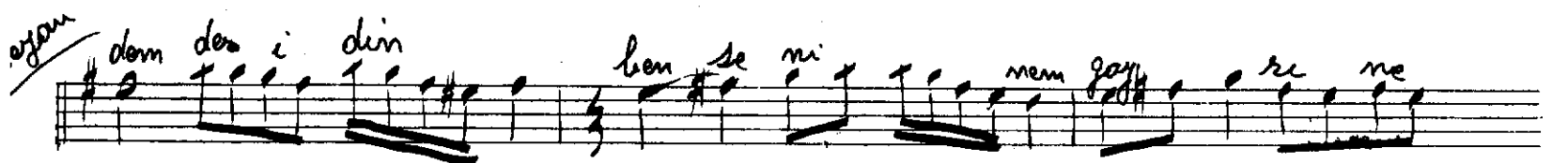
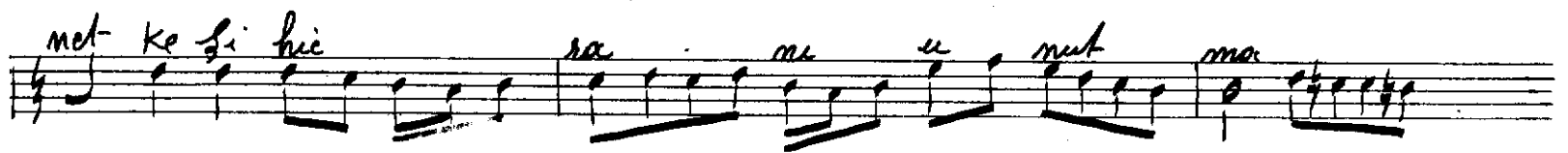
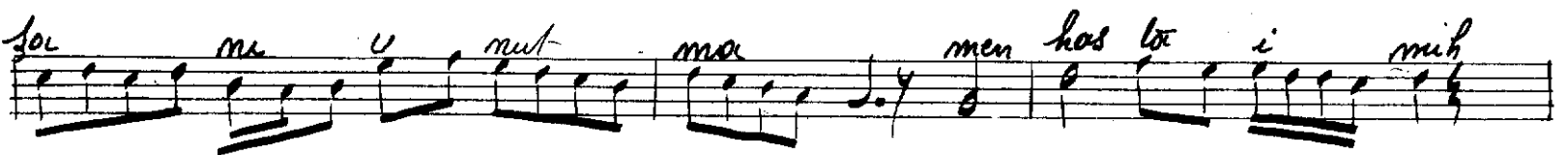
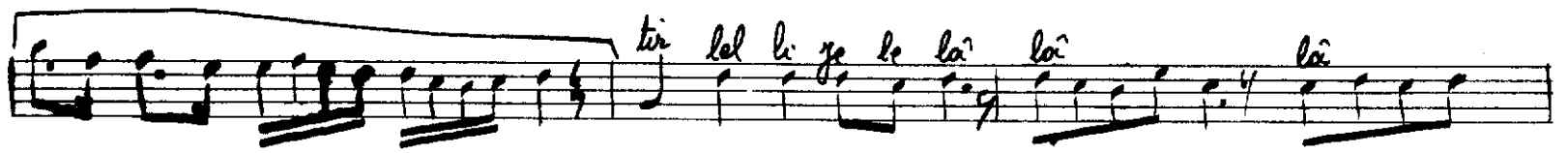


Nikriz jürük sernai

Kadri ağa





gel bel li gele lai bel bel li gele lai lai lai rainayamen
Terennümmü saz

Tir bel li gele lai tir bel li gele lai lai lai zihayamen
ah bel yarin

Ben aşık-ı mahzun-ı perisam unutma
men hasta-ı miknetkezi hicram unutma
Terennümmü saz
ah bel yarin

Her dem der idin ben seminem gayre ne hacet
ol demleri jad eyk o dererani unutma
ah bel yarin

(Terennümmü saz)

ayaz İktörümü :

Hah
com

Conale Mevlana efendimizin buyuruyarlari ki:

Hikmete ekliniden esirgemek ehlime zulümdür; Hikmete
mâchle vermek, hikmete zulümdür.