

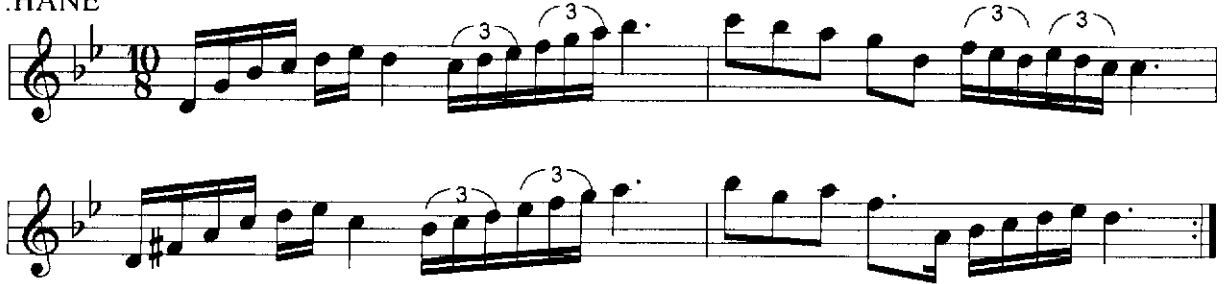
# NİHAVEND SAZSEMAİ

USUL:AKSAKSEMAİ

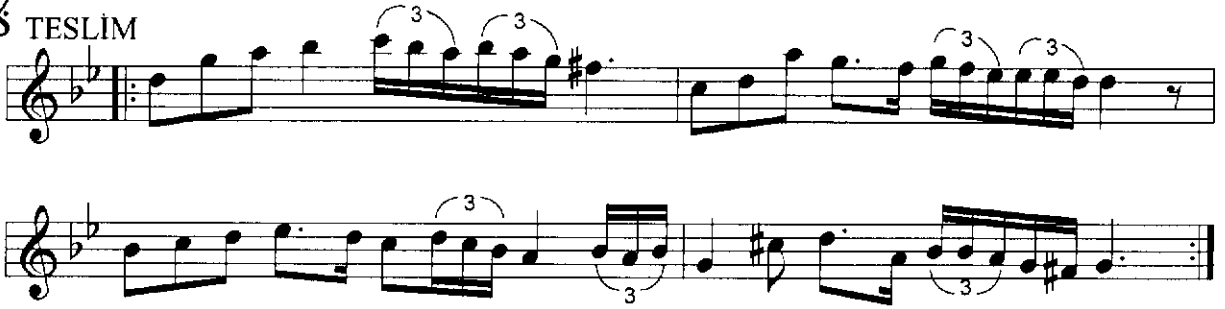
BESTE:NECİP GÜLSES

Şubat 2005,Şişli

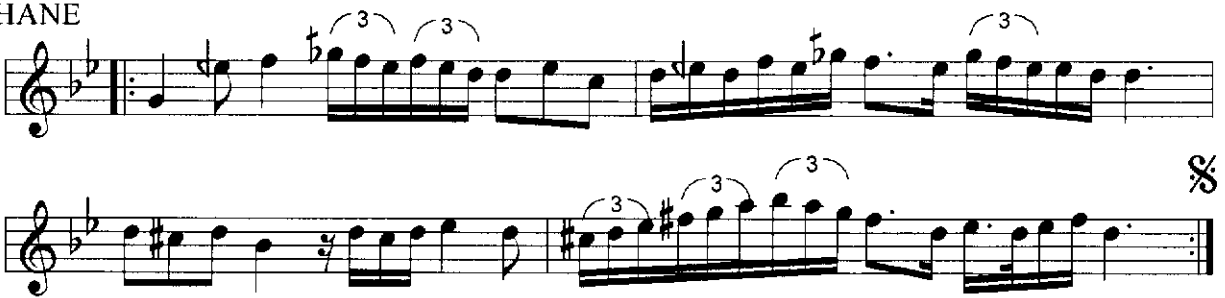
## 1.HANE



## TESLİM



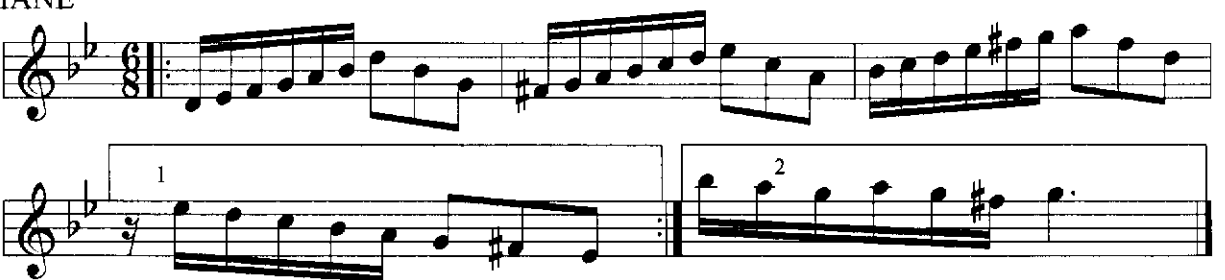
## 2.HANE



## 3.HANE



## 4.HANE



The image displays a musical score for two staves, both in treble clef and B-flat major (two flats). The first staff begins with a repeat sign and contains a complex melodic line with several triplets. It is divided into two measures, each with a first ending bracket labeled '1' and a second ending bracket labeled '2'. The second staff also begins with a repeat sign and contains a similar melodic line. It is divided into two measures, each with a first ending bracket labeled '1' and a second ending bracket labeled '2'. The key signature changes to one flat (F major) in the second measure of the second staff. The score concludes with a double bar line and a repeat sign. The name 'N. Güllers' is written in the bottom right corner.

1 2

1 2

N. Güllers