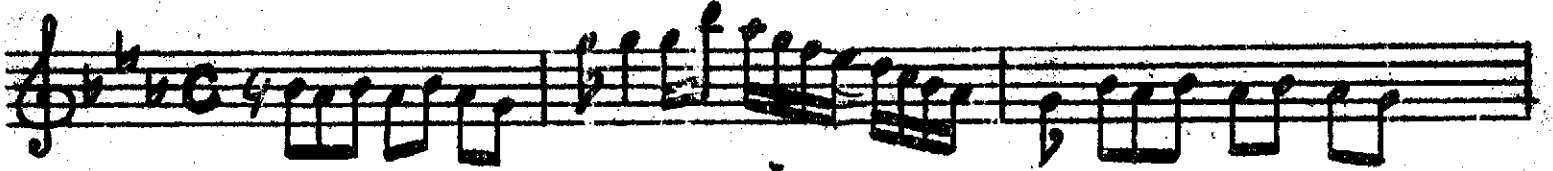
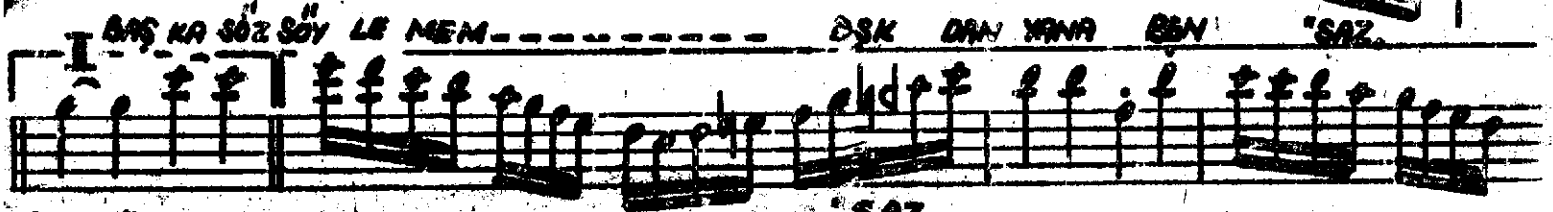
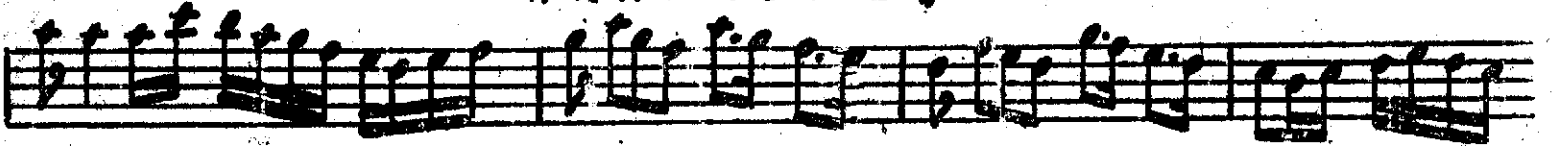


"BAŞKA SÖZ SÖYLENEM AŞK DAN YANA BEN."



"ARANAĞME."



BAN "SAZ."

"SAZ."



"SAZ."

YARALI BİR



KUŞUM

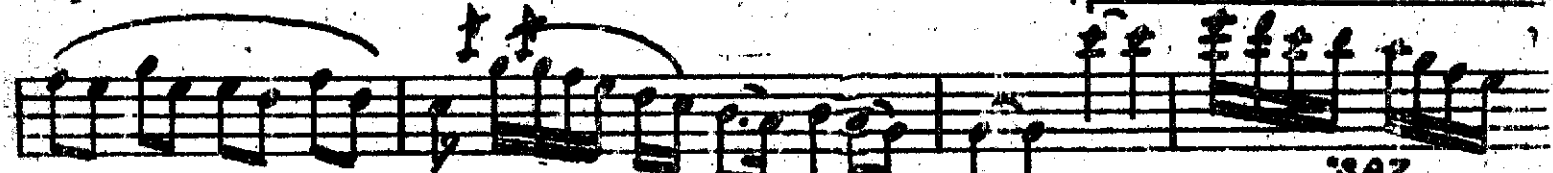
BAT

TİM

KA NA

BEN

YARALI BİR



"SAZ."



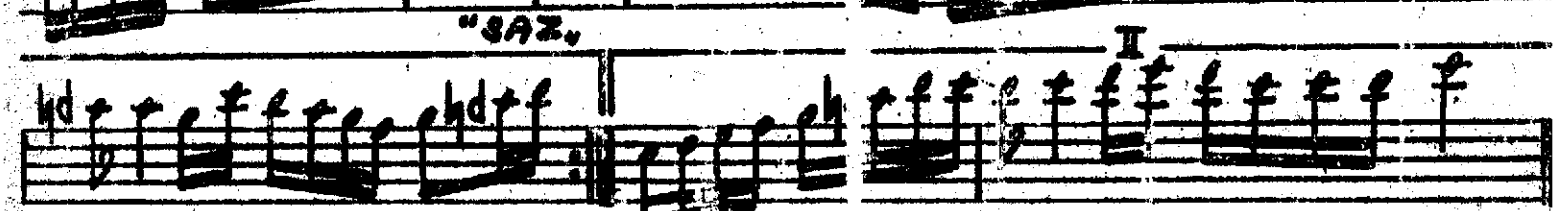
KUŞUM

BAT

TİM

KA VA

BEN



"SAZ."

"SAZ."

M