

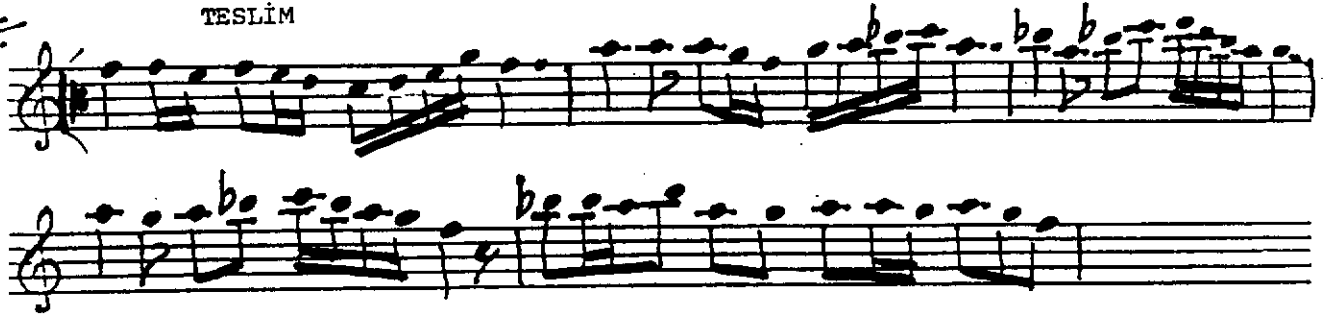
(♩, 160)

I. HANE

I

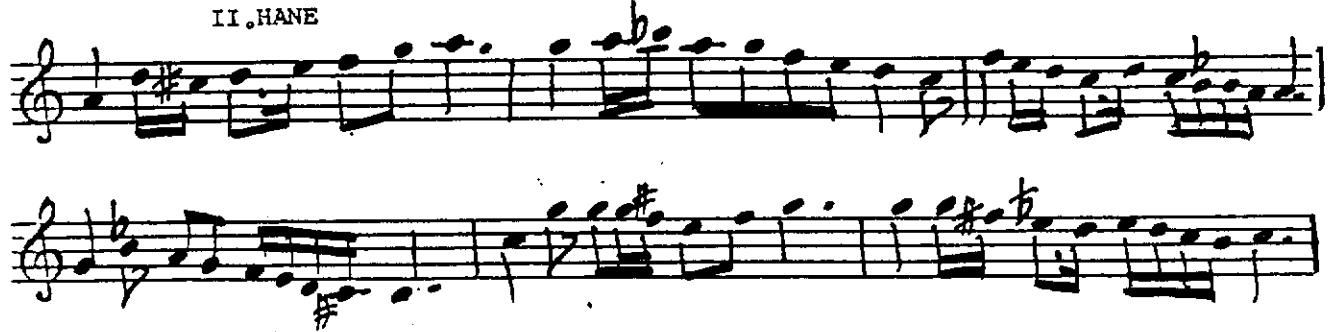


TESLİM



II. HANE

II



III. HANE

III



ACEMBUSELİK SAZ SEMAİSİ -nin devamı .

YÜRÜKÇİ

IV. HANE

4

5

Handwritten musical notation for the 6th staff. It begins with a treble clef, a key signature of one sharp (F-sharp), and a 10/16 time signature. The staff contains a series of eighth and sixteenth notes, ending with a double bar line and a fermata.

10. 4. 1996

P. ERIC