

ACEMAŞİRAN SAZSEMÂÎSİ

Handwritten musical score for Flute 1 and Violoncello. The score is written on ten staves, with the first two staves for Flute 1 and the remaining eight for Violoncello. The key signature is one flat (B-flat), and the time signature is 10/8. The Flute 1 part begins with a first ending bracket. The Violoncello part includes a first ending bracket and a section marked 'p cresc.' (piano crescendo). The score concludes with a double bar line and repeat signs.

NoT: Flüt partisi tınlama farkına göre transpoze edilerek yazılmıştır.

3.

3.

4. Marx Tempas (♩ =)

2/4

4. Marx Tempas (♩ =)

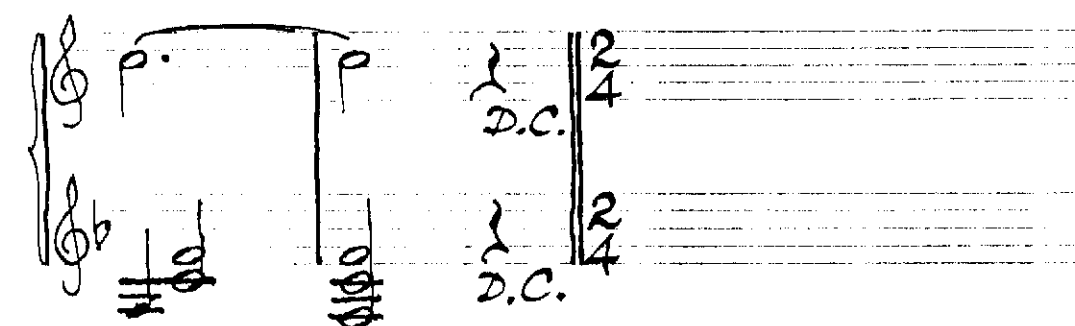
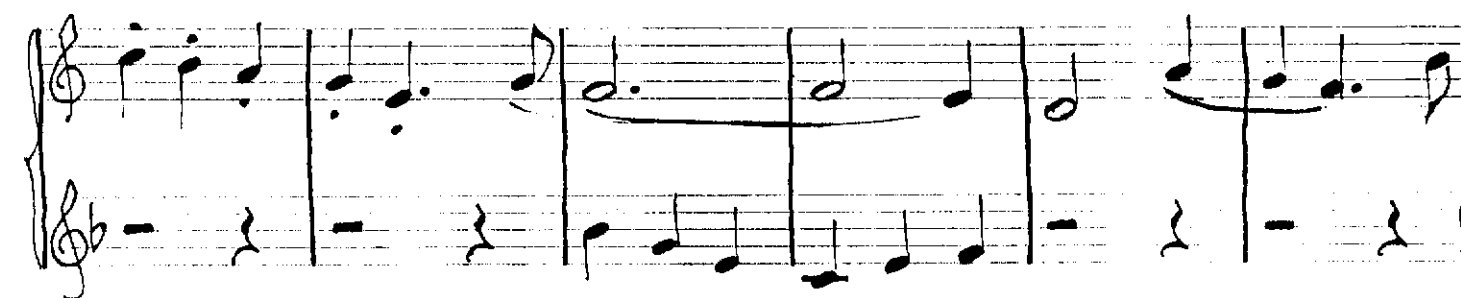
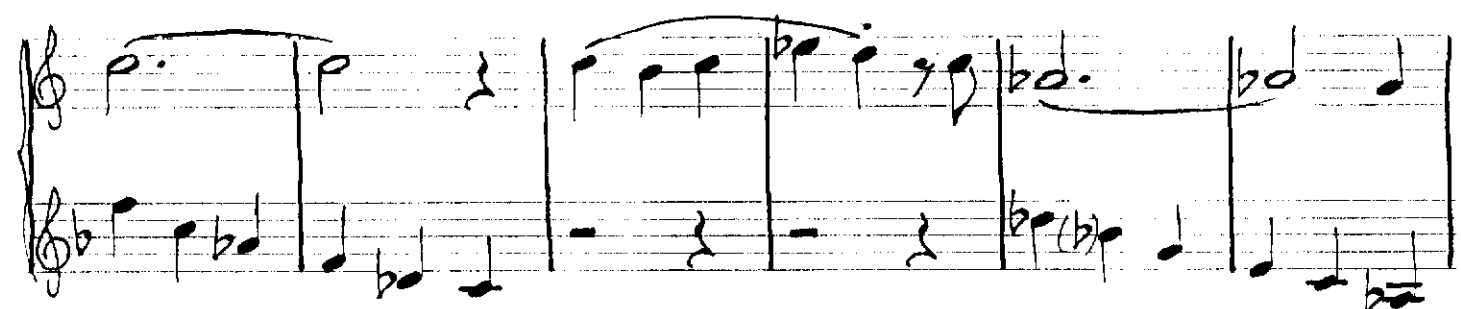
12

1

3/4

3/4

mf



C. TANRIKORUR (1962)

Handwritten musical score for piano, measures 1-4. The score is written on two staves. Measure 1: Treble staff has a quarter note G4, eighth notes A4-B4, and a quarter note C5. Bass staff has a quarter note G3, eighth notes A3-B3, and a quarter note C4. Measure 2: Treble staff has a quarter note D5, eighth notes E5-F5, and a quarter note G5. Bass staff has a quarter note D4, eighth notes E4-F4, and a quarter note G4. Measure 3: Treble staff has a quarter note A5, eighth notes B5-C6, and a quarter note D6. Bass staff has a quarter note E4, eighth notes F4-G4, and a quarter note A4. Measure 4: Treble staff has a quarter note E6, eighth notes F6-G6, and a quarter note A6. Bass staff has a quarter note B4, eighth notes C5-D5, and a quarter note E5. Fingering numbers 1, 2, and 3 are indicated above and below notes.

Handwritten musical score for piano, measures 5-6. Measure 5: Treble staff has a quarter note G4, eighth notes A4-B4, and a quarter note C5. Bass staff has a quarter note G3, eighth notes A3-B3, and a quarter note C4. Measure 6: Treble staff has a quarter note D5, eighth notes E5-F5, and a quarter note G5. Bass staff has a quarter note D4, eighth notes E4-F4, and a quarter note G4. Fingering numbers 1, 2, and 3 are indicated above and below notes.