

SULTÂNİ YEGÂH

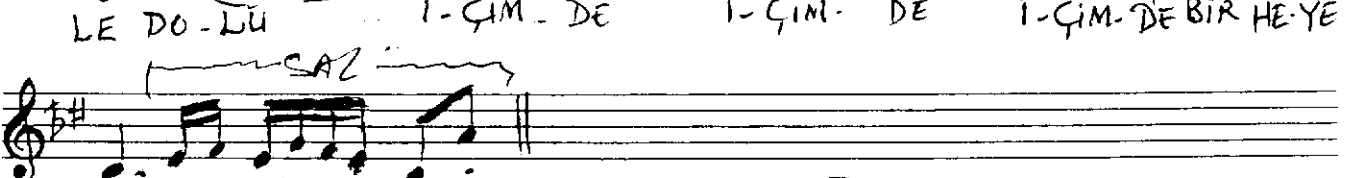
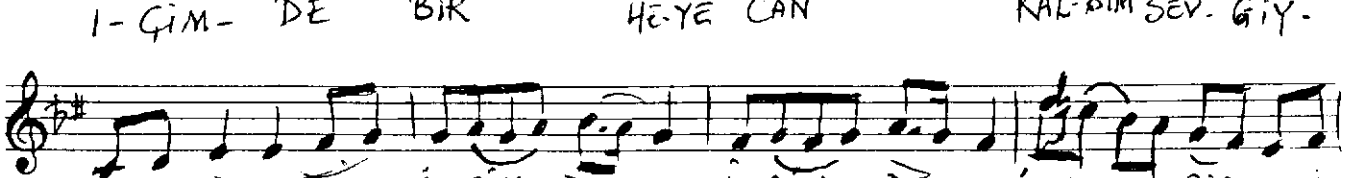
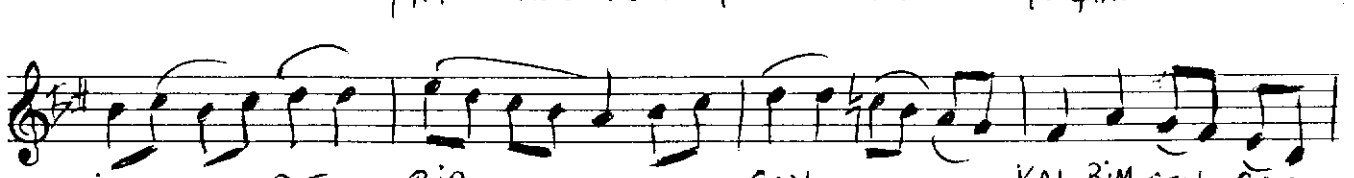
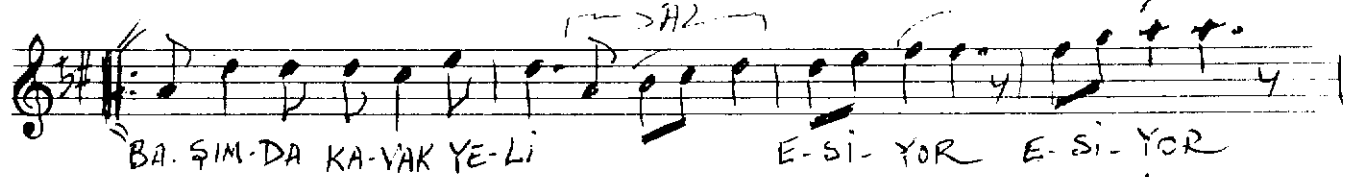
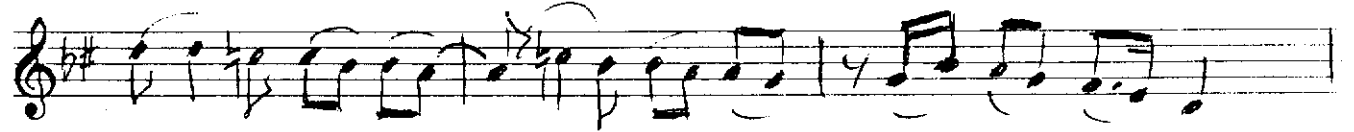
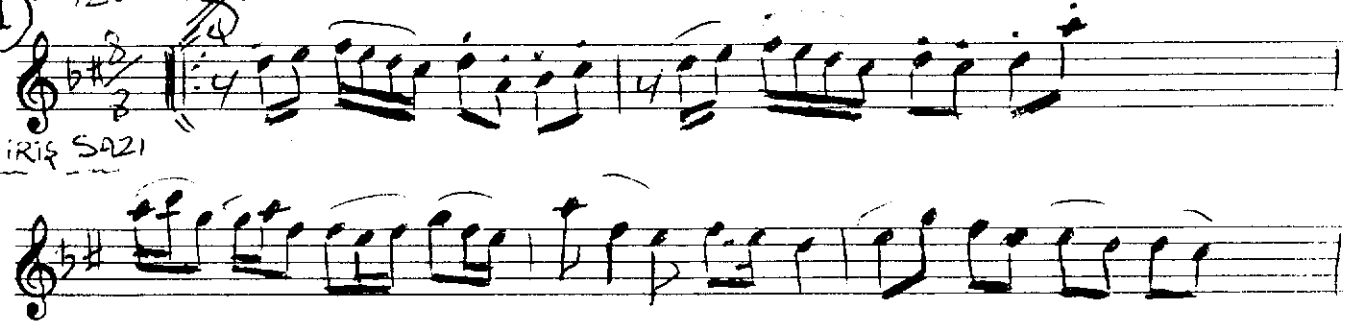
Beste: ALÂEDDİN YAVASÇA
Güfte: HÜSÂMETTİN OLGUN
Beste tarihi: 23/06/2002 - BODRUM

ŞARKI

Düyek/Semai (♩ = 70)

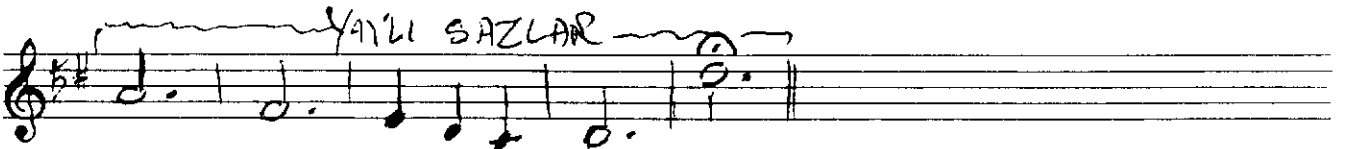
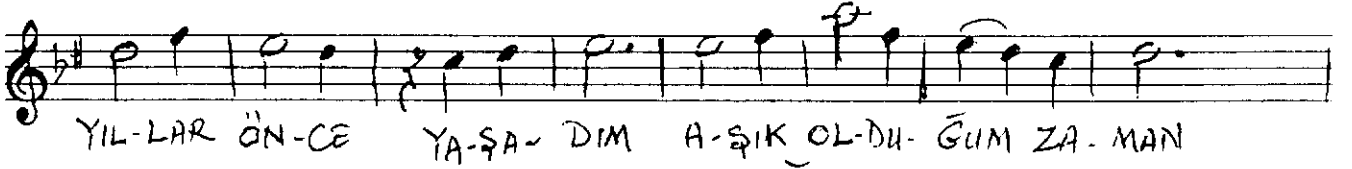
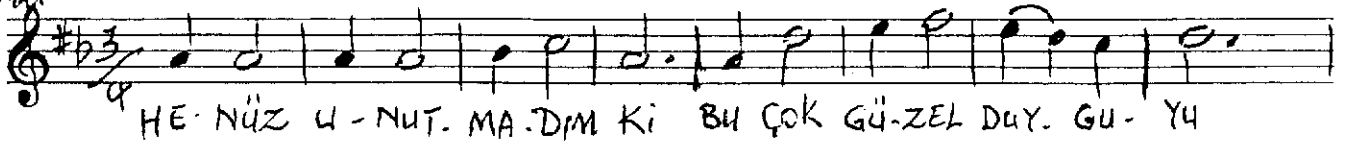
♩ = 120

GİRİŞ SAZI



(2)

Semaî 1=40



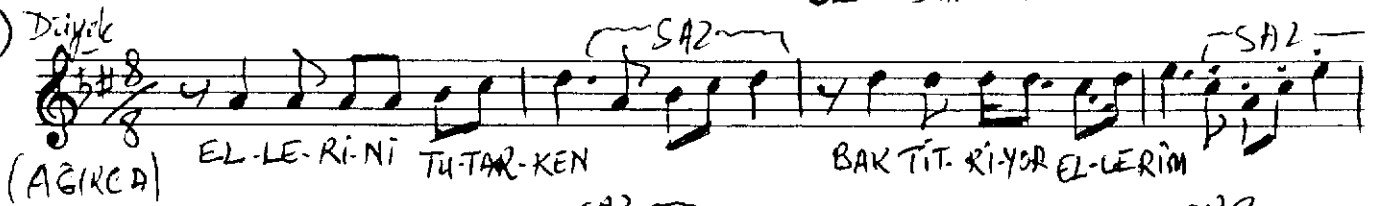
BİR MERTEBE AĞIR TEMPO'DA

Düyek

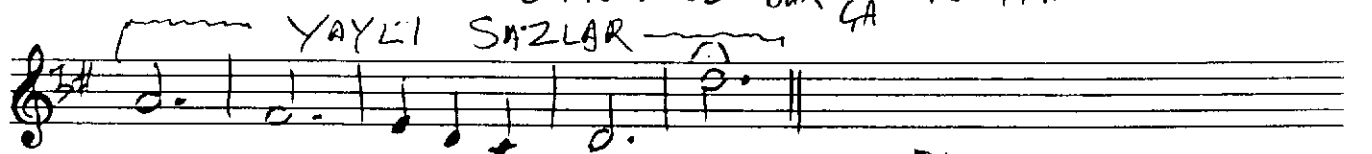
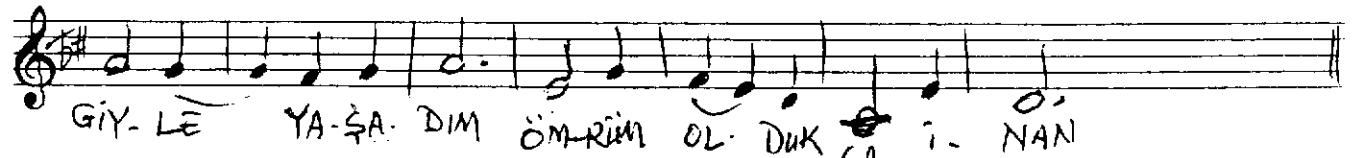
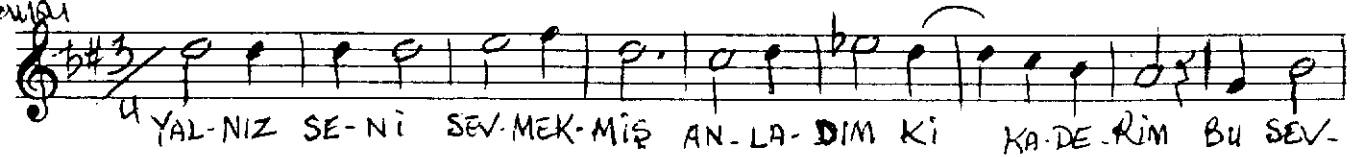
Bastaki
Aranjmanı

(2)

Düyek



Semaî



(BİR MERTEBE AĞIR TEMPO'DA)



Düyet

3

8 YIL LAR SON-RA YE-Nİ-DEN Yİ-NE SE-Nİ SEV-DİM BEN

f SAZ

YIL-LAR SON-RA YE-Nİ-DEN SA-NA A-ŞIK OL-DUM BEN, SON

f SAZ

(AĞIR TEMPODA)