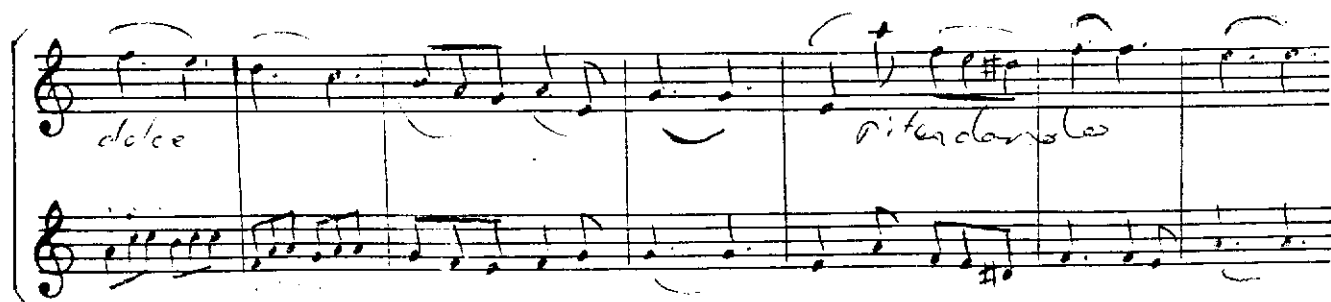


$\text{♩} = 100$

Ahmet Halipoğlu
25. Ek. 1962, İstanbul.

Mehtab'da Hayal
Astefta Saz Eseri.



Handwritten musical score, first system. Two staves. The top staff contains a melody with eighth and sixteenth notes, some beamed together. The bottom staff contains a bass line with similar rhythmic values. A repeat sign is visible at the beginning of the top staff.

Handwritten musical score, second system. Two staves. The top staff continues the melody with some triplets. The bottom staff continues the bass line.

Handwritten musical score, third system. Two staves. The top staff features a melodic line with some triplets. The bottom staff has a more active bass line with many sixteenth notes. The marking *mf* is written between the staves.

Handwritten musical score, fourth system. Two staves. The top staff has a melody with some triplets. The bottom staff has a very active bass line with many sixteenth notes. The marking *dolce* is written under the first measure of the top staff, and *rit.* is written under the last two measures of the top staff.

Handwritten musical score, fifth system. Two staves. The top staff continues the melody. The bottom staff continues the active bass line. The system ends with a double bar line.

Handwritten musical score for two systems of two staves each. The notation includes treble clefs, various note values (quarter, eighth, sixteenth notes), rests, and dynamic markings. The first system features a *ff* marking in the second measure of the top staff. The second system includes *mf* and *p* markings in the first measure of the top staff, and the phrase "ritardando e la" written below the staff. The piece concludes with the word "Son" at the bottom right.

ff

mf *p*

ritardando e la

Son