

SULTÂNİYEGÂH PEŞREVİ

Refik Fersun

HÂNE. 1

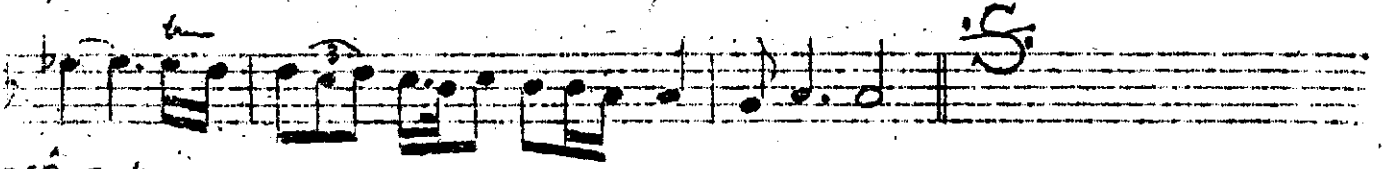
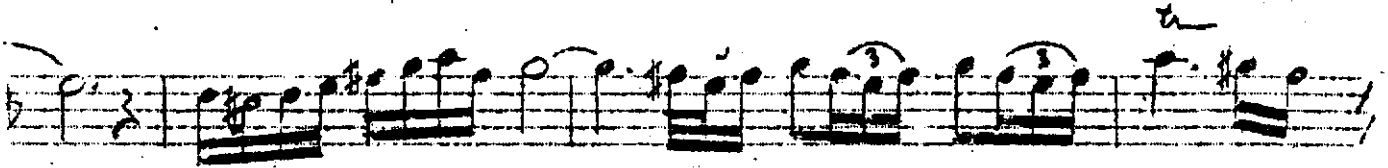
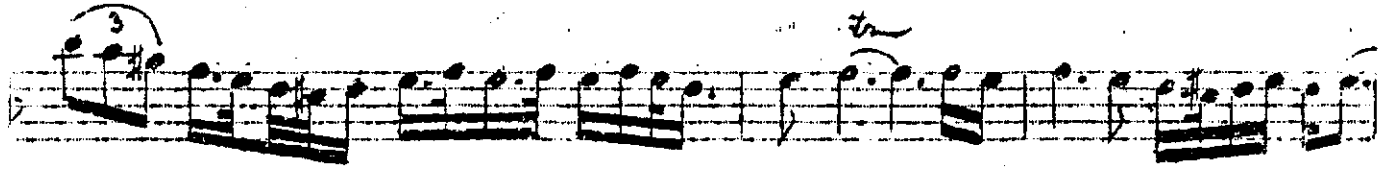
The musical score for HÂNE. 1 is written on two staves. The melody is in the upper staff, starting with a treble clef and a common time signature. The piano accompaniment is in the lower staff, starting with a bass clef and a 4/4 time signature. The melody consists of a series of eighth and sixteenth notes, with some rests and accidentals. The piano accompaniment consists of a steady eighth-note pattern. The score is marked with various musical symbols, including notes, rests, and accidentals. There are also some handwritten markings, such as 'tu' and 'a', above the melody.

HÂNE. 2

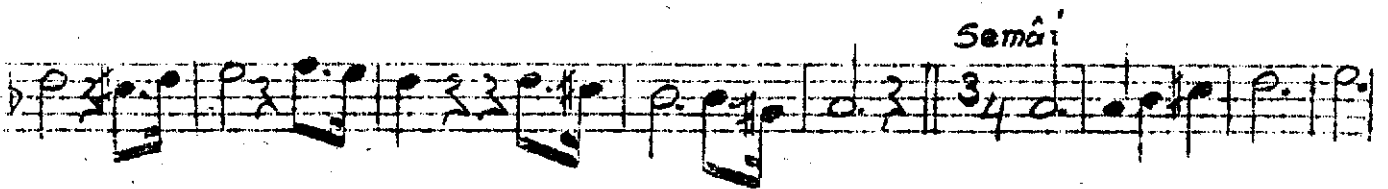
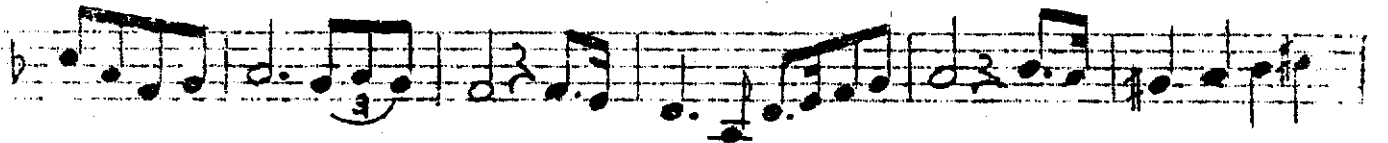
The musical score for HÂNE. 2 is written on two staves. The melody is in the upper staff, starting with a treble clef and a common time signature. The piano accompaniment is in the lower staff, starting with a bass clef and a 4/4 time signature. The melody consists of a series of eighth and sixteenth notes, with some rests and accidentals. The piano accompaniment consists of a steady eighth-note pattern. The score is marked with various musical symbols, including notes, rests, and accidentals. There are also some handwritten markings, such as 'tu' and 'a', above the melody.

Sultaniyegâh Peşrevin devamı

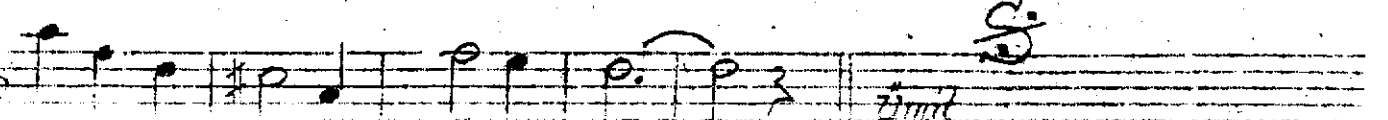
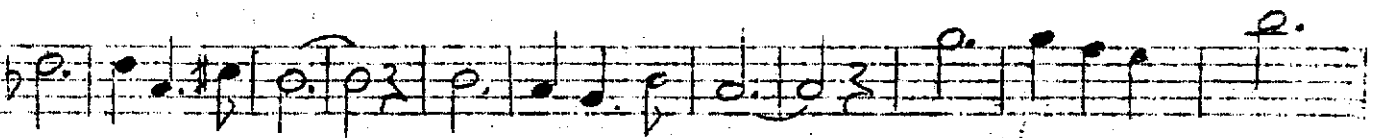
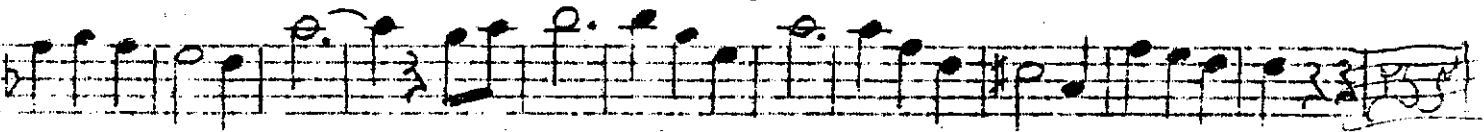
5.



1. ANE. 4



Semâi



Enmîr