

# İSTANBUL KONSERVATUVARI

NEŞRİYATI

Türk Musikisinin Klasikleri

№ 145

NAYI YUSUF PAŞA

DÜĞÂH MAKAMINDA  
PEŞREV VE SAZ SEMAİSİ

KONSERVATUVARDAKİ İLMÎ HEY'ET TARAFINDAN

TETKİK ve KABUL EDİLMİŞTİR,

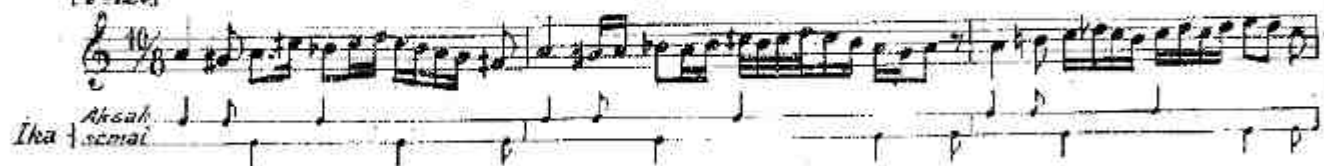
HER HAKKI MAHFUZDUR

FİATİ 5 KURUŞ



*Düğâh mahamında sax semaisi*  
*Nayî Yusuf Paşanın*

[120]



*Teslim*



*İinci hane*



*Süncü hane*



*Düncü hane (Yürük semâi)*



*Dügâh makamında ve devri kebir ikûında Peşrev*  
*Nâîî Yusuf Paşanın*

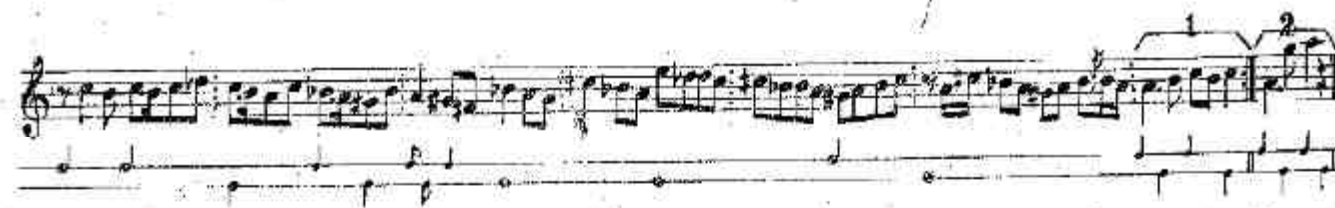
[♩=48]



*Teslim*



*İkinci hane*



*3 üncü hane*



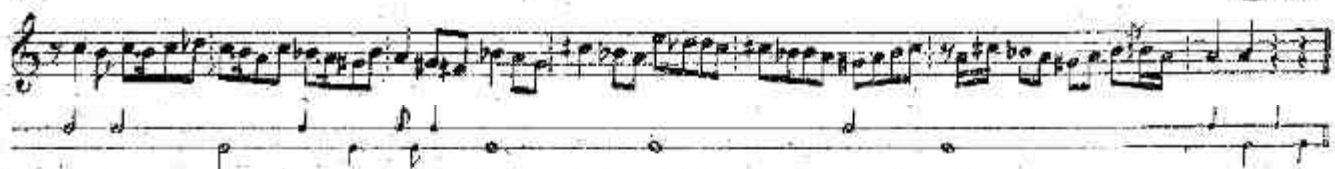
Three systems of musical notation for the '3 üncü hane' section. Each system consists of a treble staff with a complex melody featuring many sixteenth and thirty-second notes, and a bass staff with a simpler accompaniment of eighth and quarter notes. The key signature has one flat (B-flat), and the time signature is 2/4.

*4 üncü hane*



Three systems of musical notation for the '4 üncü hane' section. The notation continues with a treble staff featuring a fast, intricate melody and a bass staff with a steady accompaniment. The key signature remains one flat, and the time signature is 2/4.

*Son*



A single system of musical notation for the 'Son' section. It follows the same two-staff format as the previous sections, with a treble staff containing a concluding melody and a bass staff with accompaniment. The key signature is one flat, and the time signature is 2/4.