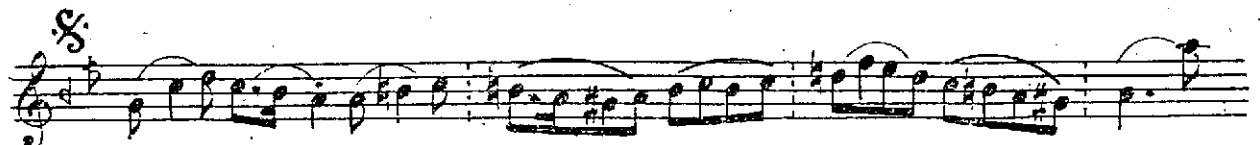
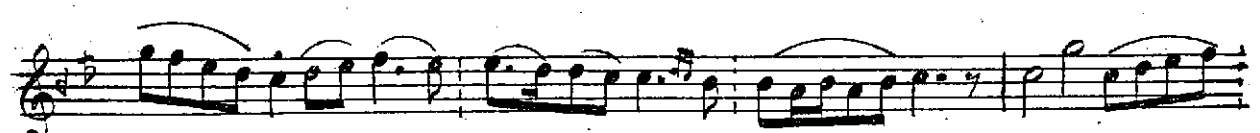
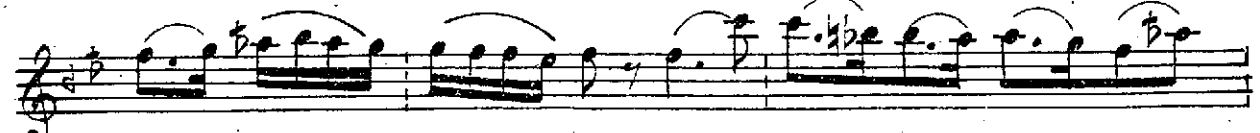


Saba Buselik Makamında ve Devri Kebir
Usulünde peşrev NAYI YUSUF PAŞA

(1)



(2)



A handwritten musical score consisting of ten staves. The notation is in treble clef with a key signature of one flat (B-flat). The music features a variety of rhythmic patterns, including eighth and sixteenth notes, often beamed together in groups. Slurs are used to indicate phrasing across multiple notes. The score includes several repeat signs and first/second endings. A double bar line with a repeat sign appears on the sixth staff, followed by two endings labeled '1' and '2'. Another similar structure occurs on the tenth staff. The handwriting is clear and legible, typical of a personal manuscript or a student's work.

4

1 2

1 2