

# SABÂ AŞİRAN PEŞREV

USUL: FAHTE

BESTE: ÜÇÜNCÜ SELİM

1.HANE

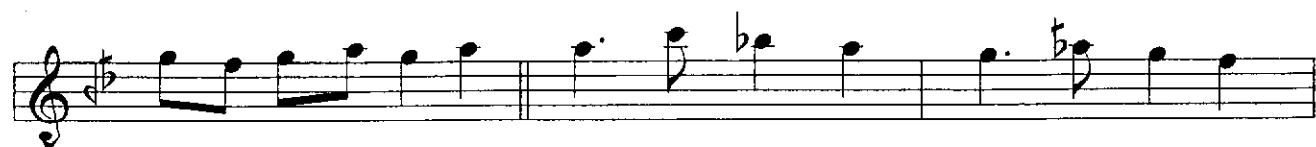




TESLİM



2.HANE

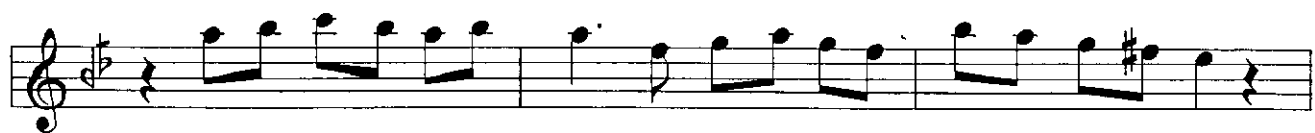


Handwritten musical score on ten staves. The notation is in treble clef with a key signature of one flat (B-flat). The music consists of a single melodic line. The notation includes eighth and sixteenth notes, rests, and various accidentals (sharps, flats, and naturals). A repeat sign is present on the third staff. The score concludes with a double bar line and a final cadence symbol (a stylized 'S' or 'X' shape) on the tenth staff.

### 3.HANE

This musical score, titled "3.HANE", consists of ten staves of music written in G major (one sharp, F#) and 4/4 time. The notation is as follows:

- Staff 1:** A melodic line starting on G4, moving stepwise up to D5, then down to G4, with a quarter rest at the end.
- Staff 2:** A melodic line starting on G4, moving stepwise up to D5, then down to G4, with a quarter rest at the end.
- Staff 3:** A melodic line starting on G4, moving stepwise up to D5, then down to G4, with a quarter rest at the end.
- Staff 4:** A melodic line starting on G4, moving stepwise up to D5, then down to G4, with a quarter rest at the end.
- Staff 5:** A melodic line starting on G4, moving stepwise up to D5, then down to G4, with a quarter rest at the end.
- Staff 6:** A melodic line starting on G4, moving stepwise up to D5, then down to G4, with a quarter rest at the end.
- Staff 7:** A melodic line starting on G4, moving stepwise up to D5, then down to G4, with a quarter rest at the end.
- Staff 8:** A melodic line starting on G4, moving stepwise up to D5, then down to G4, with a quarter rest at the end.
- Staff 9:** A melodic line starting on G4, moving stepwise up to D5, then down to G4, with a quarter rest at the end.
- Staff 10:** A melodic line starting on G4, moving stepwise up to D5, then down to G4, with a quarter rest at the end.



#### 4.HANE



