
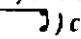
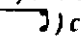
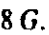


2) 'Alî Unî 62v/124. $1 = \text{J}$. The piece is assigned to the mode *uşşâk* and to the rhythmic cycle *muhammes*. The original name of the composer, Dervîş 'Oşmân, has been crossed out and Şâh-i Hübân Şerîf written above.

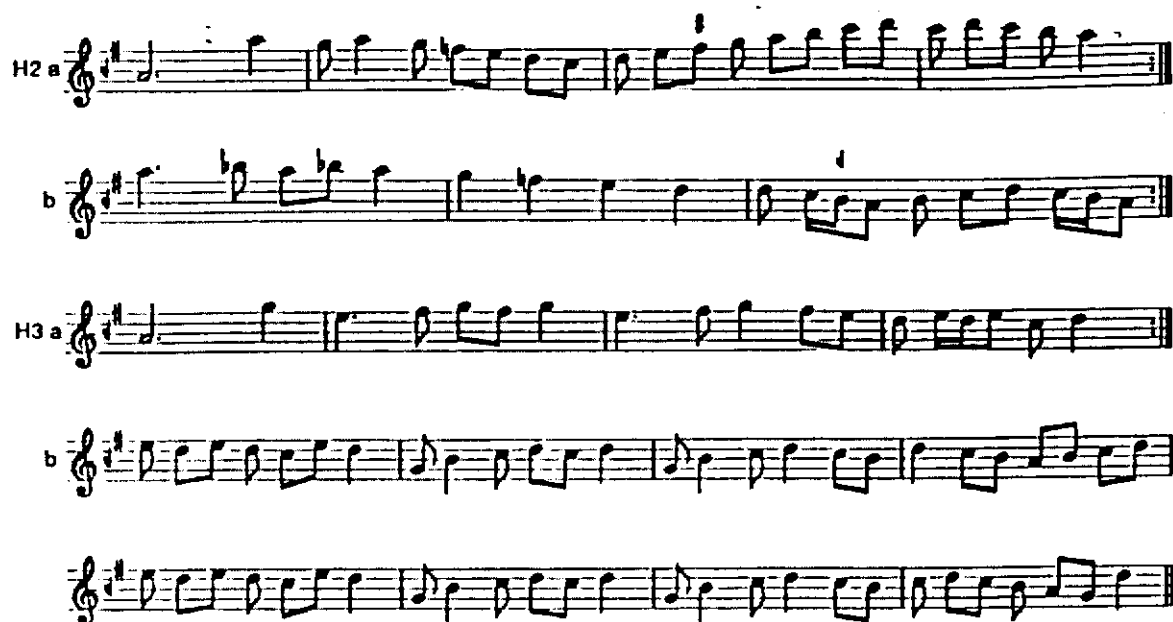
H1 a: 1-4 are written as (the equivalent of) two cycles to be repeated. 7: 2 c, 8: 5-6 d c ().

H1 b 1: 7-8 c d (), 4: 5-8 A B d () c d.

M a 2: 1-2 d c d, 5 c (), 4: 7-8 G.

M b 1: 4, 6 c B d, 3: 7-8 G, 4: 

6: 2 A, 7: 5-8 *prima volta*: A B d c d, *seconda volta*: A.



2) H2 a 2: 5 f?#, 4: 1 bdc'.

H2 b 1: 1 g, 3-4 b?d c, 5-6 b?dc b?d, 2: 3-4 f?#, 3: 7-8 d cBd.

H3 a 4: 2-3 e d.

H3 b 1: 4 c, 5-6 Bd c, 2: 6 cBd. H3 b is written as (the equivalent of) four cycles to be repeated. 4:

