

(CİHAN ÂRÂ) HÜSEYİNİ PEŞREV

USÛL: DÜYEK

BESTE: HASAN CAN ÇELEBİ

Serhâne



Mulâzime %



SON

Hâne-i sâni

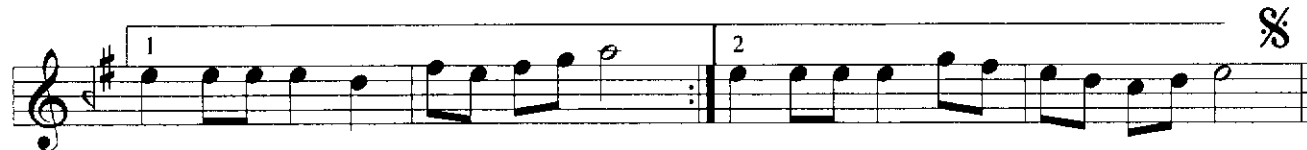
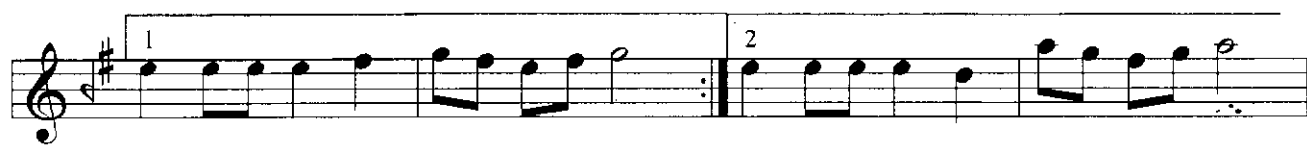


Musical score for *Hâne-i sâni*, written in treble clef with a key signature of one sharp (F#) and a common time signature (C). The score consists of eight staves. The first staff begins with a repeat sign. The second staff continues the melody. The third staff contains a first ending (marked '1') and a second ending (marked '2'). The fourth staff continues the melody. The fifth staff ends with a repeat sign. The sixth staff continues the melody. The seventh staff contains a first ending (marked '1') and a second ending (marked '2'). The eighth staff ends with a repeat sign and a double bar line.

Hâne-i sâlis



Musical score for *Hâne-i sâlis*, written in treble clef with a key signature of one sharp (F#) and a common time signature (C). The score consists of three staves. The first staff begins with a repeat sign. The second staff continues the melody. The third staff continues the melody and ends with a repeat sign and a double bar line.



Serbend

