

# Acem Aşîrân Peşrev

Usûl: Devr-i Kebîr

Beste: Neyzen Sâlih Dede

[1818?-1888]

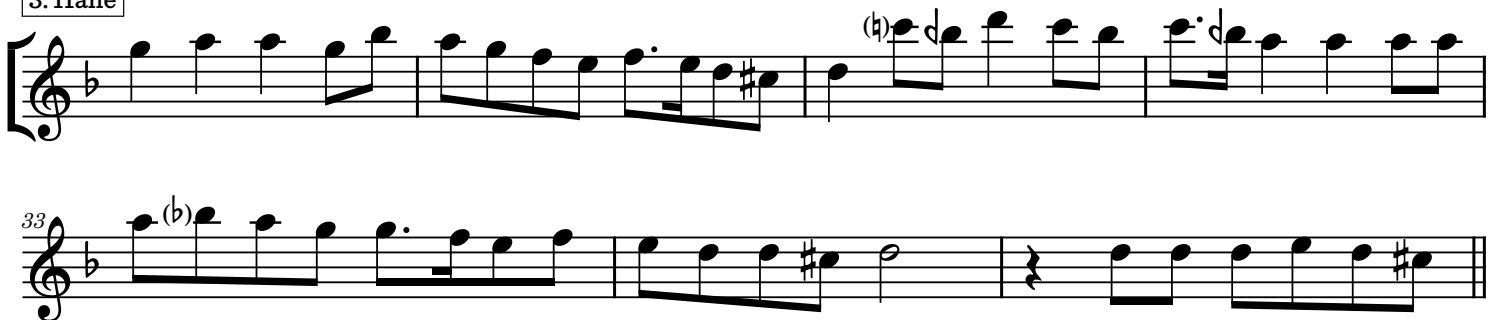
## 1. Hâne



## 2. Hâne



## 3. Hâne



36  Musical notation for measures 36-39. Measure 36: Treble clef, key signature of one sharp (F#), 4/4 time. Notes: G4 (quarter), A4 (quarter), B4 (quarter), A4-G4 (beamed eighth notes), F#4 (quarter). Measure 37: Notes: E4 (quarter), D4 (quarter), C4 (quarter), B3 (quarter). Measure 38: Notes: A3 (quarter), G3 (quarter), F#3 (quarter), E3 (quarter). Measure 39: Notes: D3 (quarter), C3 (quarter), B2 (quarter), A2 (quarter).

40

Example 10-10, Part 2, measures 40-42. The notation is in treble clef with a key signature of one flat (B-flat). Measure 40 begins with a whole rest, followed by a quarter note G4, a quarter note F4, and a quarter note E4. Measure 41 contains a half note D4, a quarter note C4, a quarter note B3, a quarter note A3, a quarter note G3, and a quarter note F3. Measure 42 contains a half note E3, a quarter note D3, a quarter note C3, and a quarter note B2. The piece concludes with a double bar line.

#### 4. Hâne

47 

50

The musical notation for measure 50 shows a treble clef and a key signature of one flat (B-flat). The melody consists of eighth notes: G4, A4, B4, C5, D5, E5, F5, G5, followed by a quarter rest, then G4, F4, E4, D4, C4, B3, A3, and G3.

54 *mustafu  
eren  
etmel* Son

**Son**

mustafa  
eren  
güzel