

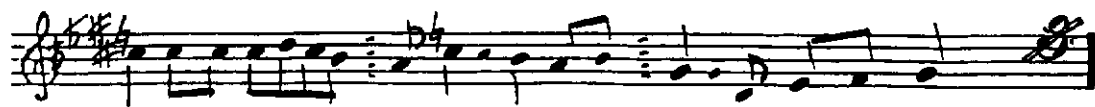
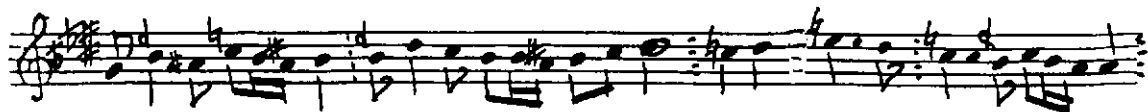
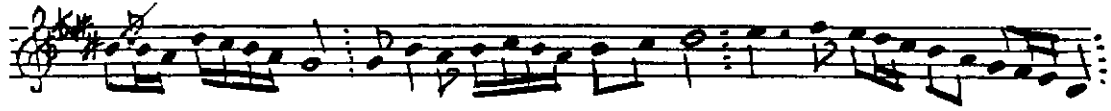
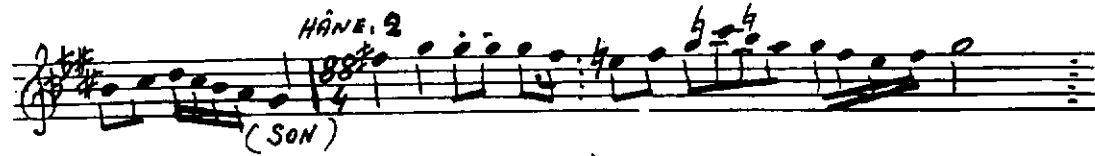
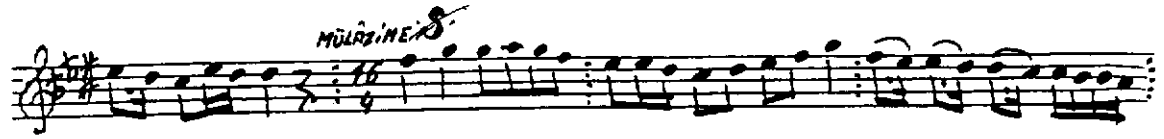
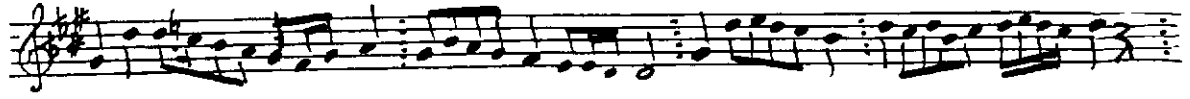
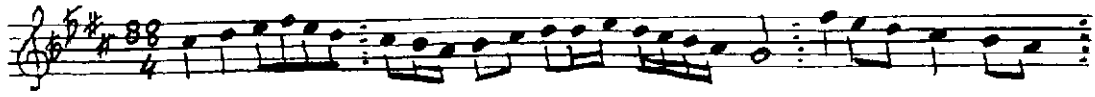
Darby Fetih

NEVESER PEŞREVİ

Beste: Rüşti Eriç

(♩ 40)

HÂNE
I



NEVESER PEŞREV'İN DEVÂMI

A handwritten musical score for a piece titled "NEVESER PEŞREV'İN DEVÂMI". The score is written on ten staves, organized into two systems of five staves each. The notation is in a traditional style, featuring a key signature of one sharp (F#) and a time signature of 4/4. The music is composed of eighth and sixteenth notes, with various rests and accidentals. The first staff begins with a treble clef and a key signature of one sharp. The second staff has a bass clef. The third staff has a treble clef. The fourth staff has a bass clef. The fifth staff has a treble clef. The sixth staff has a bass clef. The seventh staff has a treble clef. The eighth staff has a bass clef. The ninth staff has a treble clef. The tenth staff has a bass clef. The score is written in black ink on white paper. There are some corrections and markings throughout the score, including a "4" written above some notes and a "4" written below some notes. The score ends with a double bar line and a repeat sign.

22. 3. 1998

Reis