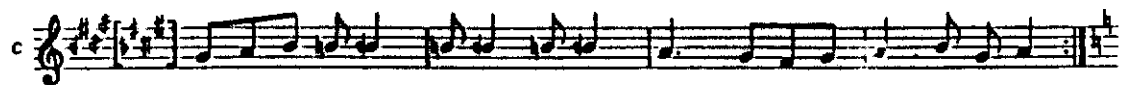
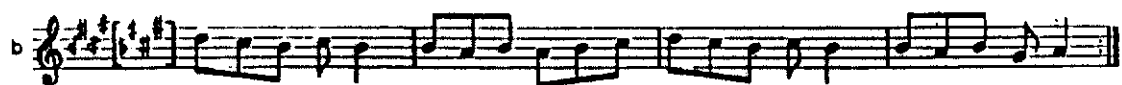


Sheet music for a musical score, page 132, featuring the title "şuri" and "semai". The score is written for multiple instruments, including H1 a, b, c, d, and H2 a, b, c, d. The key signature is one sharp (F#), and the time signature is 6/8. The music is arranged in systems, with measures 10 and 11 marked. The notation includes various musical symbols such as notes, rests, and bar lines.

The score is organized into two main sections, H1 and H2, each with four parts (a, b, c, d).
- **H1 a**: The first staff, featuring a treble clef and a 6/8 time signature. It includes a double bar line and a repeat sign.
- **H1 b**: The second staff, continuing the melody.
- **H1 c**: The third staff, continuing the melody.
- **H1 d**: The fourth staff, continuing the melody.
- **H2 a**: The fifth staff, continuing the melody.
- **H2 b**: The sixth staff, continuing the melody.
- **H2 c**: The seventh staff, continuing the melody.
- **H2 d**: The eighth staff, continuing the melody.
- **Measure 10**: The start of a new section, marked with a '10' above the staff.
- **Measure 11**: The end of the section, marked with a '11' above the staff.
- **First Ending**: A section marked with a '1.' above the staff, leading to a repeat sign.
- **Second Ending**: A section marked with a '2.' above the staff, leading to a repeat sign.



H2 d 6: 4: the original has *d*.

terkib-i inukāl means 'transitional subsection', i.e. effecting a modulation back to the original main *makam*. 7: 1-2 A J .