

HİSARBÛSELİK LONGA

Birinci Hane

Santûri Ethem Bey

The first hane of the Hisarbûselik Longa is composed of seven staves of music. The key signature is D major (two sharps) and the time signature is 2/4. The notation includes various musical symbols such as notes, rests, and bar lines. There are two first endings marked with '1' and two second endings marked with '2'.

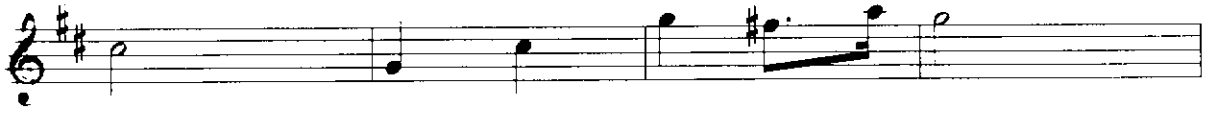
İkinci Hane

The second hane of the Hisarbûselik Longa is composed of four staves of music. The key signature is D major (two sharps) and the time signature is 2/4. The notation includes various musical symbols such as notes, rests, and bar lines. There are two first endings marked with '1' and two second endings marked with '2'.

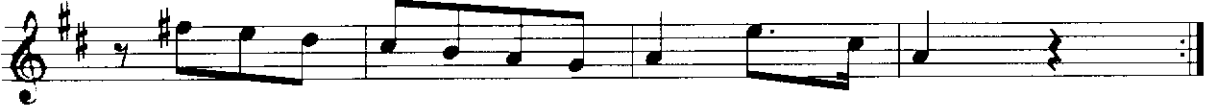
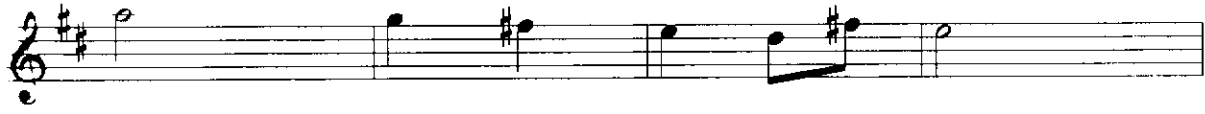
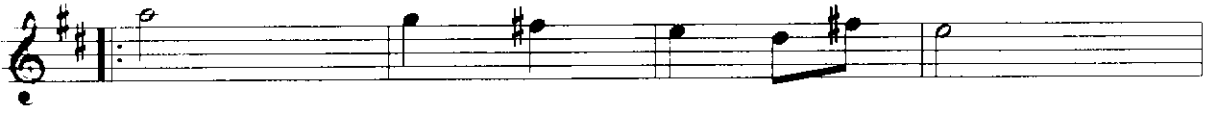
Ali Dînge

Hisarbûselik Longa

2



Üçüncü Hane



Ali Dînge

Not: Orjinali için bkz: *Santûri Ethem Bey/ s.47/ Vecdi Seyhun/ İstanbul-1948*