

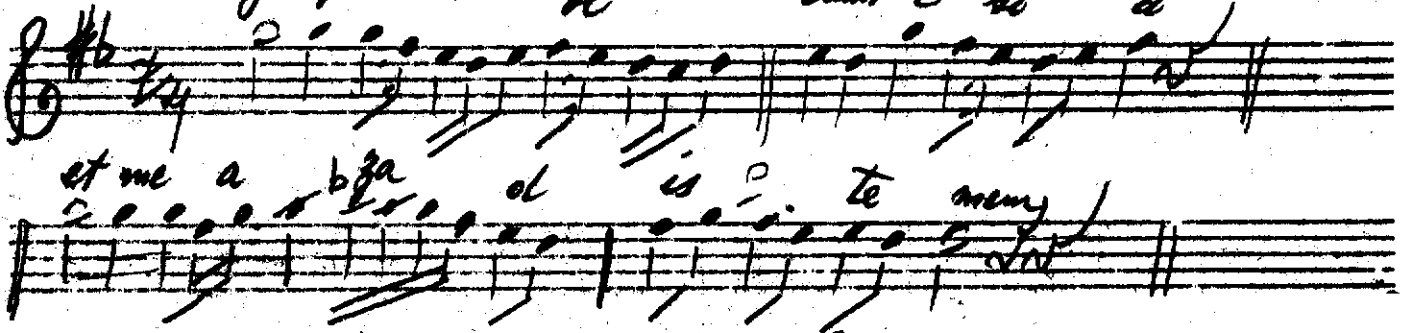
in a car: et me
adip ertey

فرام

sey: Heloni sayhux

göl fi mün ol

dum e si zi



enip te la

yan

küsni ne

vel

la hi in dat is

te mem

a göl fi

a

ya ki de

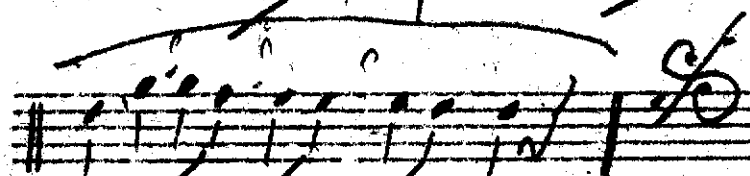
yi m ben

ba ri sen

b sus

ey

göl mül



imayk osal

zulfünün oldum esiri etme azad istemem

muhtelayem küsmüne vallahi in dat istemem

anki anarëyim ben heri sen sus ey gömül

Kenoli feryadım yeter ben hasra feryad istemem

imayk osal