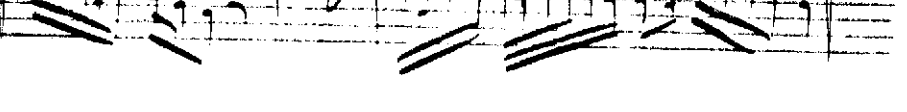
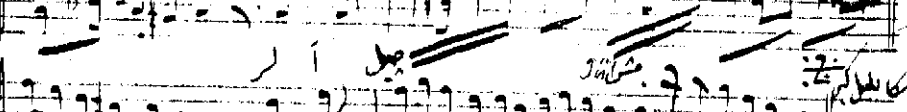
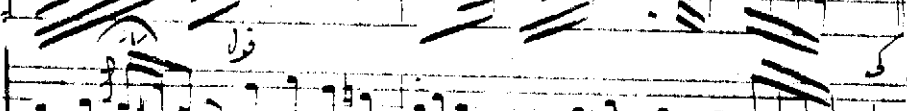
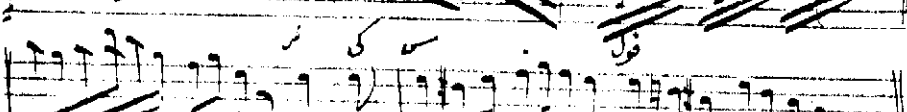
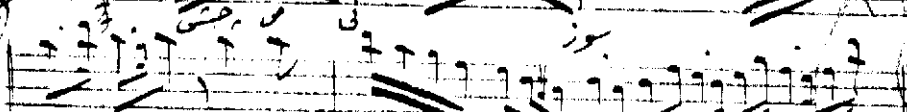
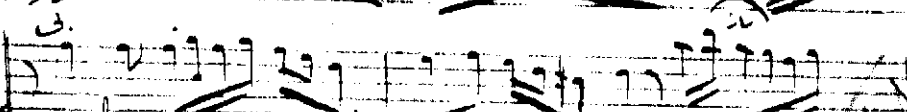
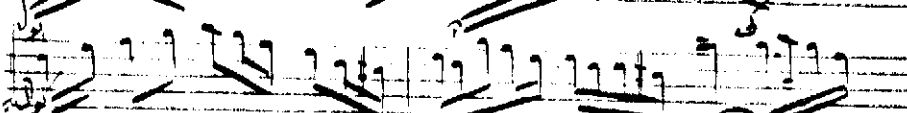
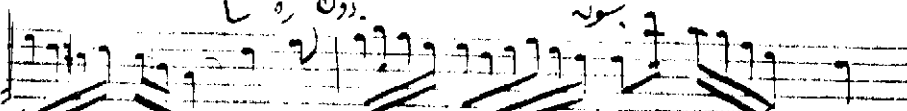
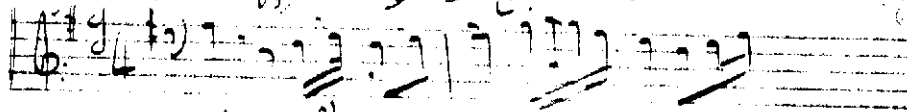


وصال شرفی احوالی غراف زلفه حاره دل سنلر کی

Handwritten lyrics in Ottoman Turkish script, continuing the poem.



Zülfüne cihşere dök cihanbüt gibi  
 Geynürü cüz nergis-i külfüt gibi  
 meşadani güller açılınca gül gibi  
 (Hep eihan meşhur şame bülbül gibi)

Hic emul nam ben geün yaz mecl-ike  
 Fulya bāğında kuyruktan katemet  
 Gayri etme sevdiğin cür ü lchā  
 Hep eihan - -