

RIFAT BEY



 zū fū ne bak dīk ca ey şu

 hi hi ci han (SAZ)

 Ey le rim bah, tī si ya him

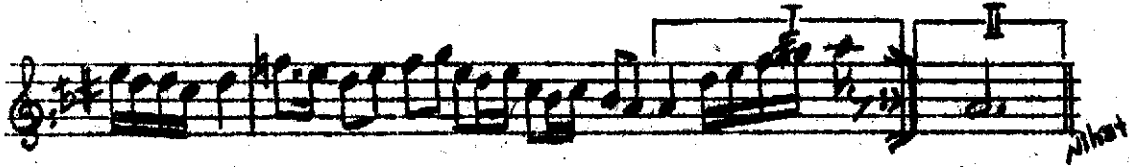
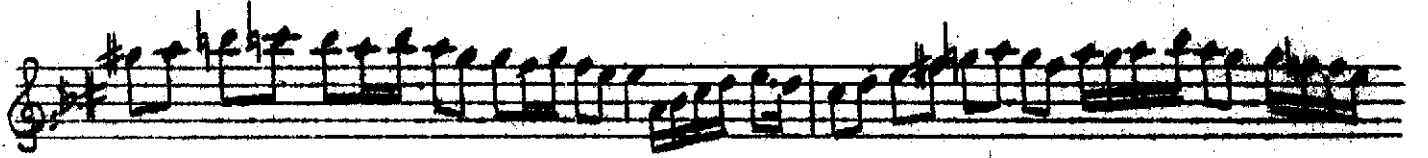
 dan fe gan (SAZ)

 Ey le rim bah tī si ya him

 dan fe gan (SAZ)

 Na le vū fer yad dīr kâ

(Zulfüne bakdıkca) DEVAMI



Zulfüne bakdıkca ey şüh-i cihan,
Eylerim baht-ı siyahımdan fegan,
Nale-vü feryaddır kârım heman,
Eylerim baht-ı siyahımdan fegan.