

BESTE: *Uşak Sazke* Güfte:
rudi: *SADI ERDEN* *Büyük SAİR NEDİMİN*

— M Yİ NE TEN HA

E Lİ ME Gi

R Dİ HE LE CA NA NI

CA NA NIM

BU SE Dİ-N CE LE Bİ Nİ

AĞ Zİ MA GE L GE-L Dİ CA

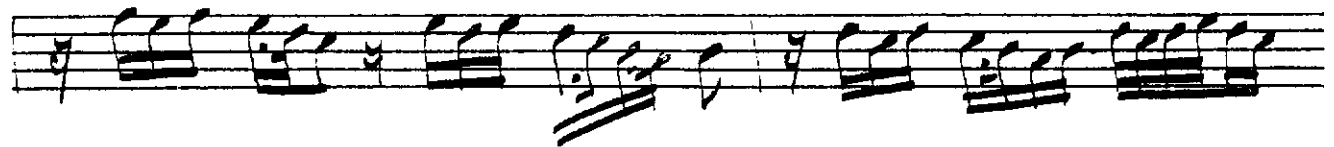
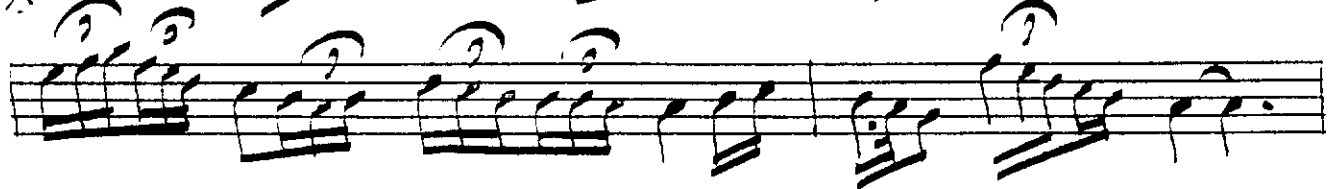
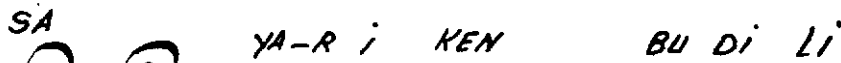
Nİ M BU SE DİN CE LE Bİ

Nİ AĞ Zİ MA GE L

GEL Dİ CA NİM



miyari



yine tenba elime girdi hele cananım
 Basedince belini ağrıma geldi canım
 Gice yıldıktı sayar iten bu dili mahlamın
 Doğdu nağah günes gibi mehi talanım

~~1st. Tel. 21836~~

Cüneyt KOSAL