

Makam : Muhayyerkürdî

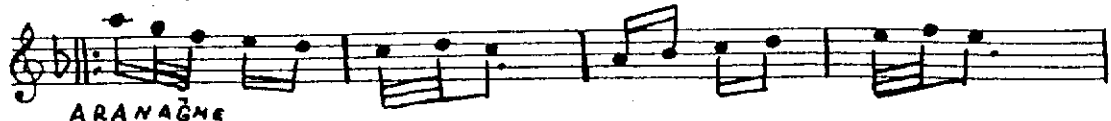
Usûl : Nim Sofyan

Metronom : 2/8

Müzik : İ. Soyse

Söz : Şule Öz.

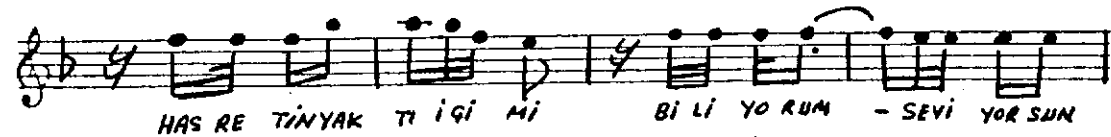
- GEL ÇIKALIM KAF DAĞINA -



ARANAĞNE



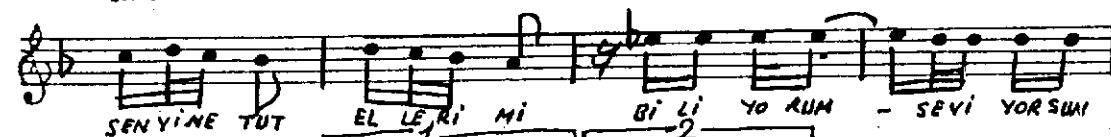
① YE TER AR TIK. GEL HAZ YAP MA



HAS RE TİNYAK TI İĞİ Mİ Bİ Lİ YO RUM - SEVİ YOR SUN



SEN Yİ NE TUT EL LERİ Mİ Bİ Lİ YO RUM - SEVİ YOR SUN



SENYİNE TUT EL LERİ Mİ Bİ Lİ YO RUM - SEVİ YOR SUN



SENYİNE TUT EL LERİ Mİ - SAZ - EL LERİ Mİ



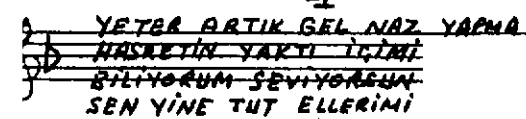
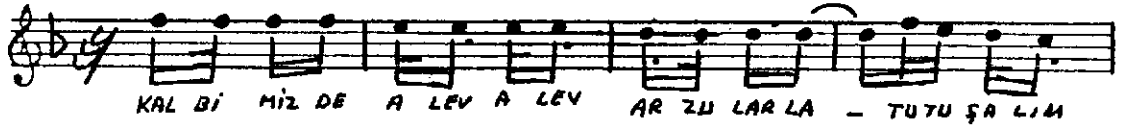
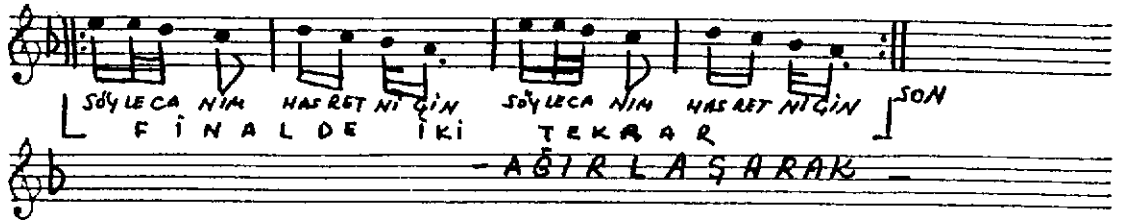
GEL ÇI KA LIM KAF DAĞI NA - MA SAL GI Bİ BİR AŞK İ GİN



BÖYLE Sİ NE BİR - SEVGİ DE SÖYLE CA NIM HAS RET Nİ GİN



GEL ÇI KA LIM KAF DAĞI NA - MA SAL GI Bİ BİR AŞK İ GİN



- II -

MUTLULUĞA YELKEN AĞAN
DUYGULARDA BULUŞALIM
KALBİMİZDE ALEV ALEV
ARZULARLA TUTUŞALIM

- NAKARAT -

GEL ÇIKALIM KAP DÜĞÜNE
MAŞAL GİBİ BİR AŞK İÇİN
BÖYLESİNE BİR SEVGİDE
SÖYLE CANIM HASRET NİÇİN

SÖZ: ŞULE ÖZMEN