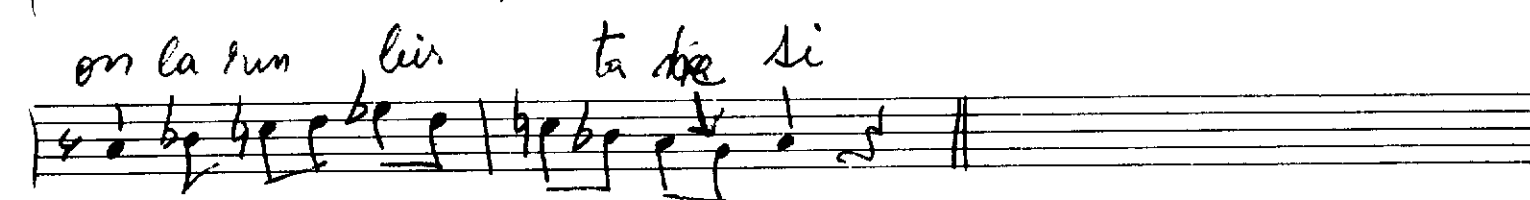
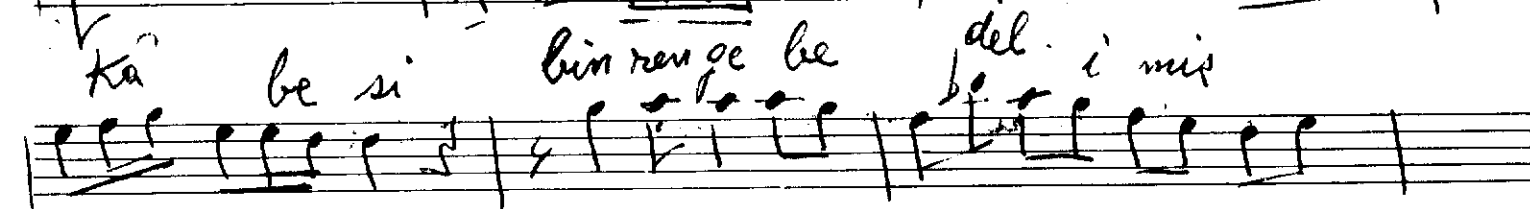
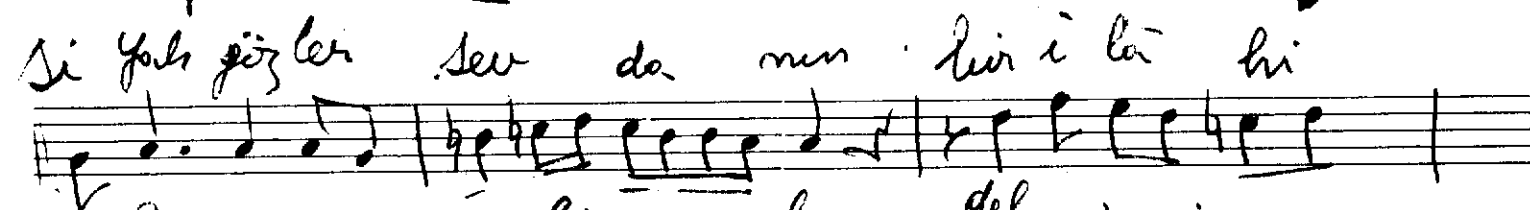
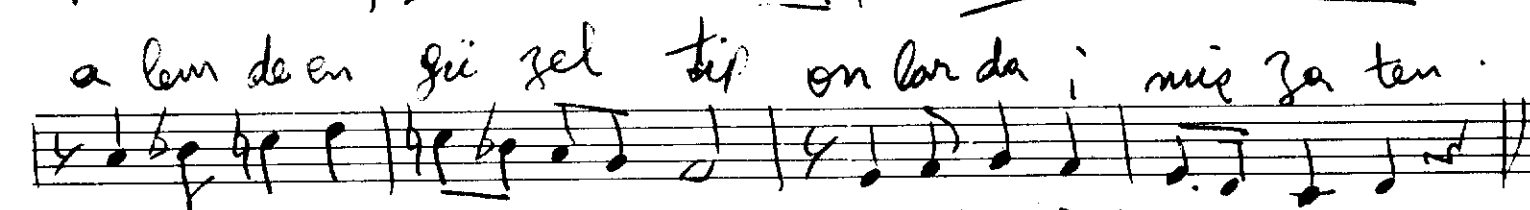
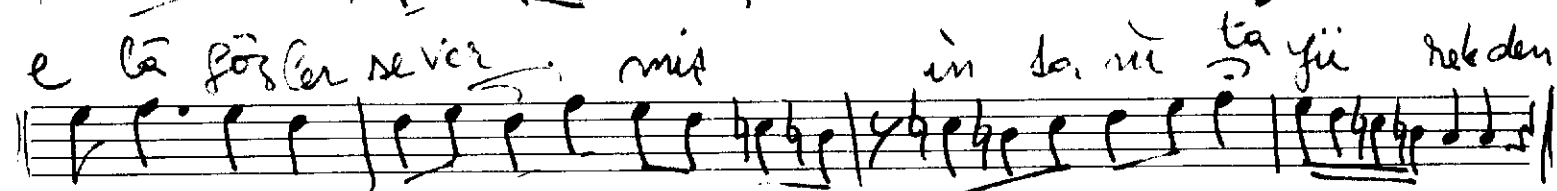
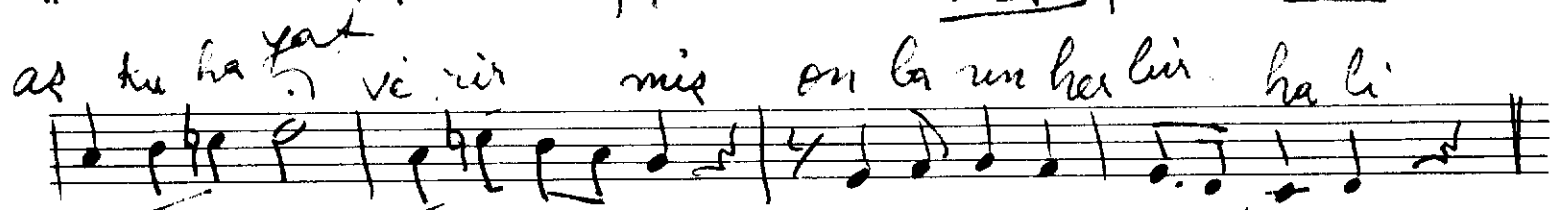
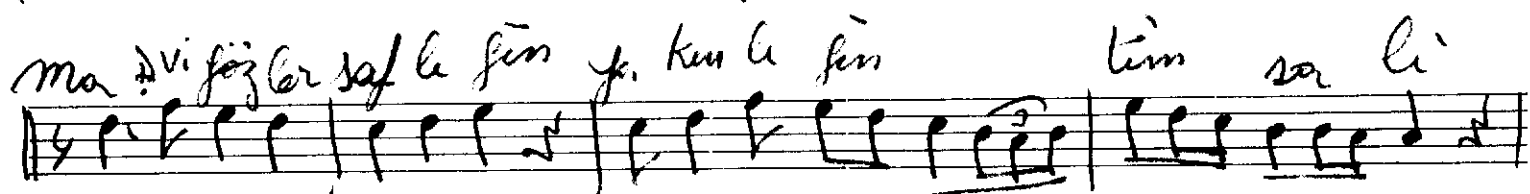
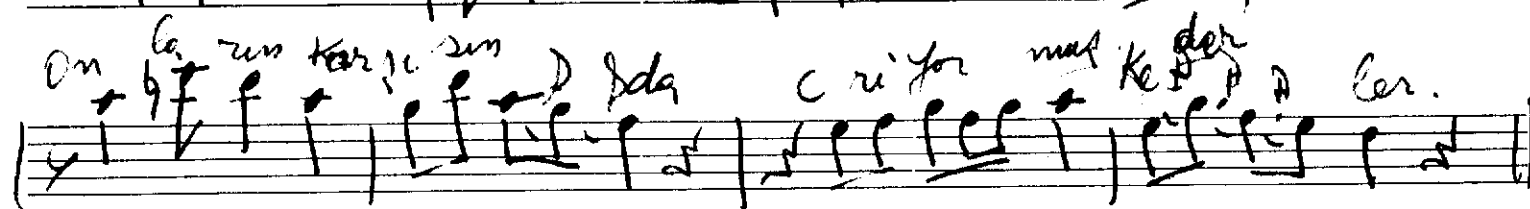
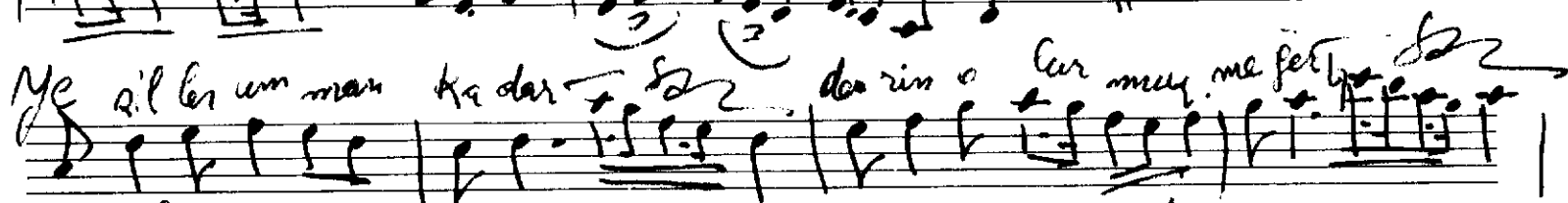
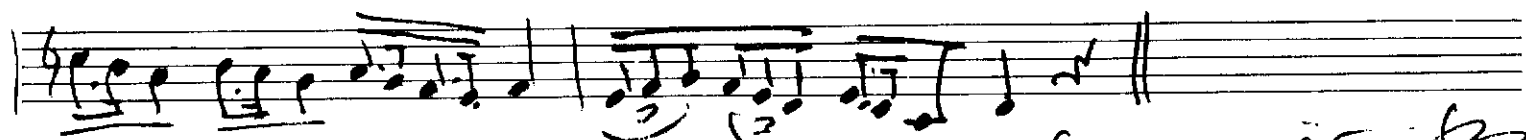
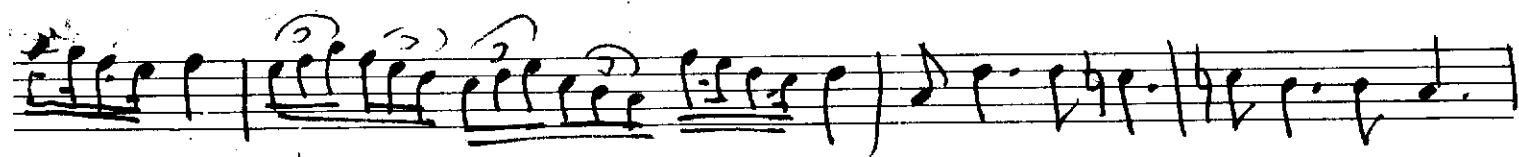
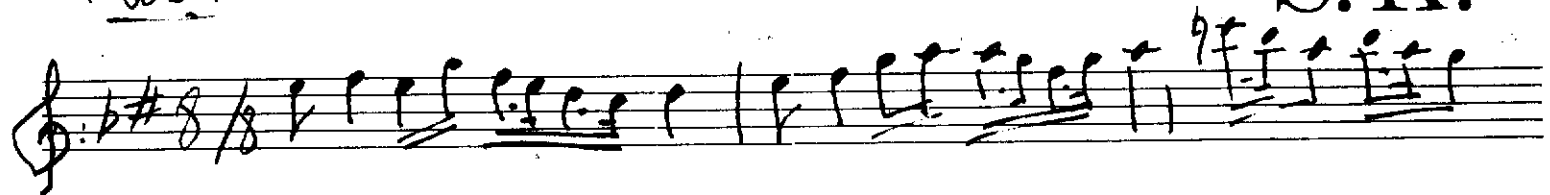


Sultanşehzade Park

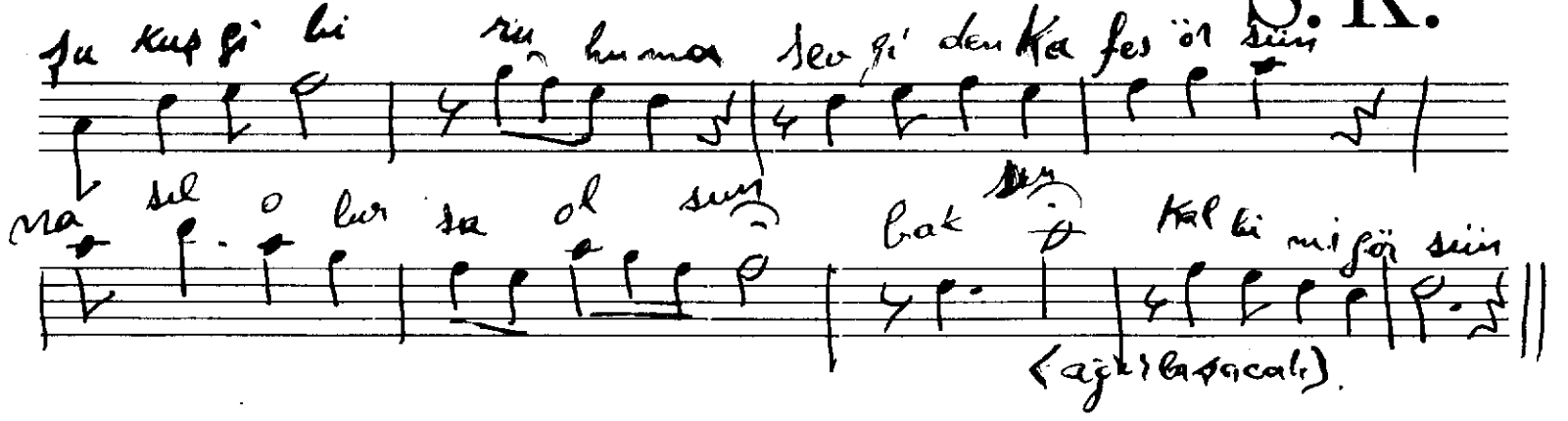
Koda

S.K.

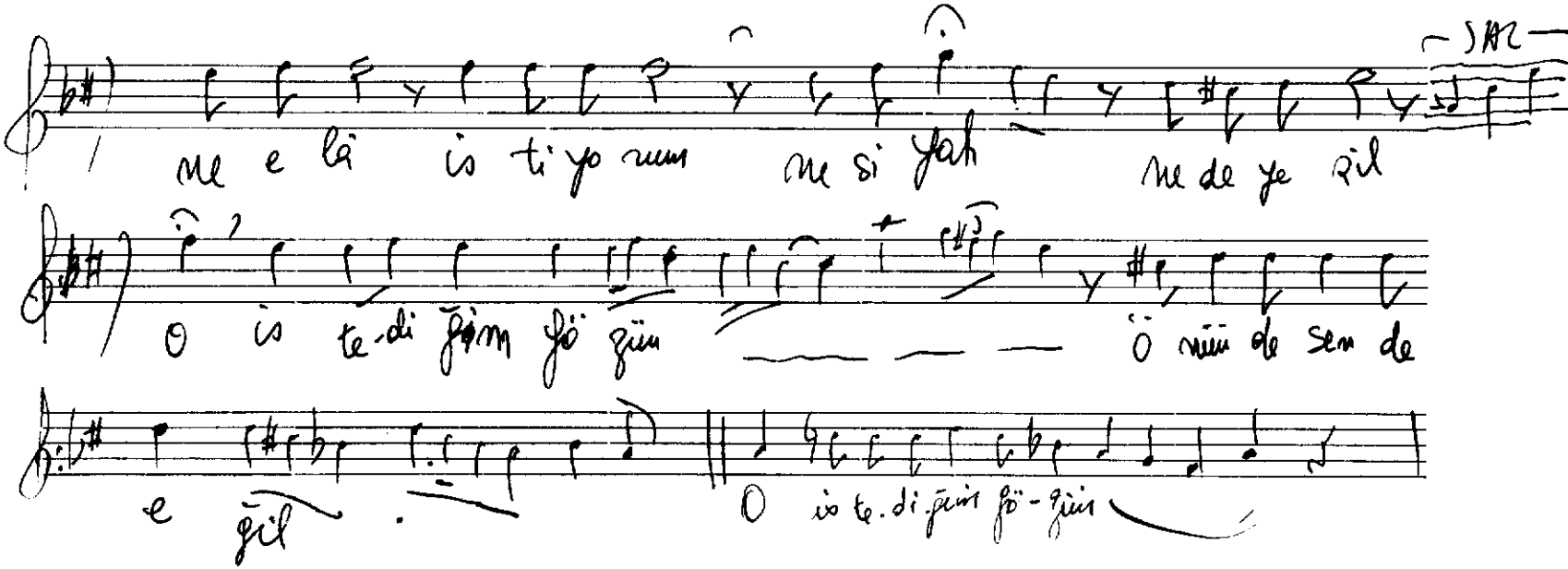


Ne elâ istiyorum, ne sıyah ne de yeşil
O istediğim sözüm önünde sen de eğil

S.K.



Şu kupa'ya bu humma sevgi' den ka fes' ol süsü



Serbest Kırım, İstade'nin beni tasviflendirmeye

İstade'nin tarafından bestelenmiştir.

